



M/Y KANGA

Launched in 2012 by the respected Monaco-based builder Wally Yachts, the 26m motor yacht Kanga is the first unit belonging to the successful displacement line WallyAce. With exterior styling and interior design by Wally and Luca Bassani, the Kanga superyacht's design is the result of the shipyard, Allseas as well as Luca Bassani Design's marvellous collaboration.

Providing simple and fresh interiors, the WallyAce superyacht Kanga can accommodate 10 guests in comfort and luxury.



LENGTH

26.23m



BEAM

7.75m



DRAFT

1.75m



MAX SPEED

13kn



GUESTS/CABINS

9/4



NUMBER OF CREW

5



SHIPYARD

Wally



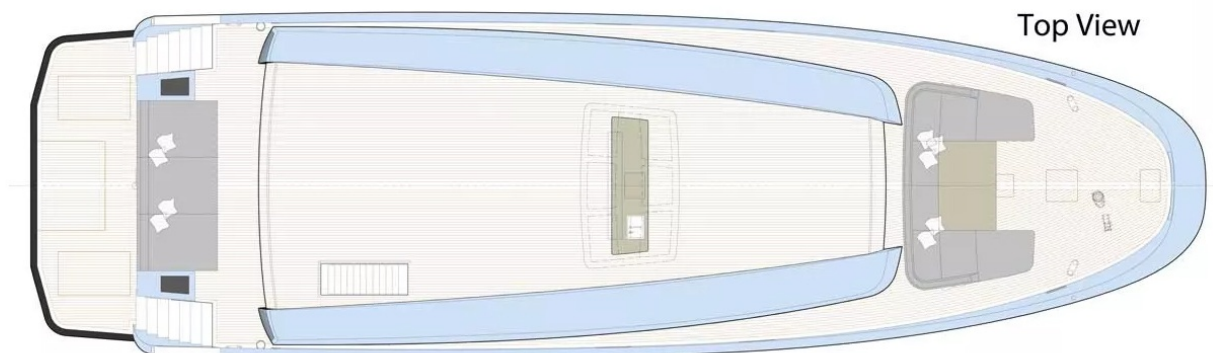
YEAR BUILT

2012

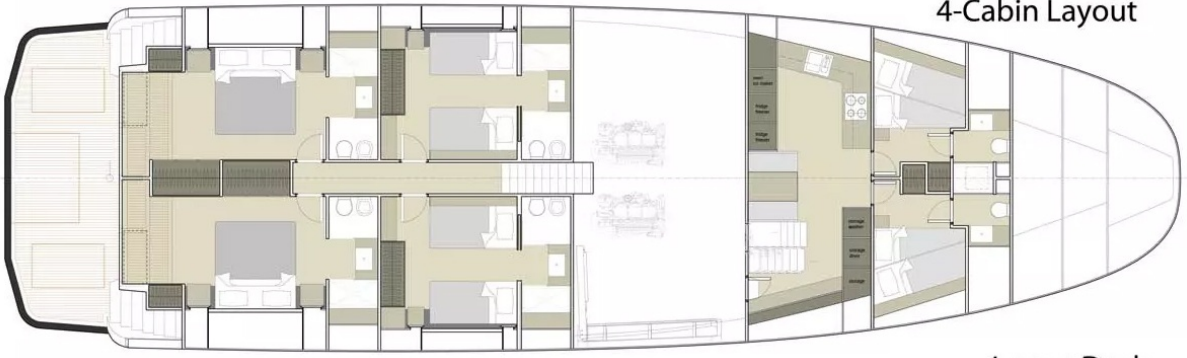


WEEKLY CHARTER RATE

From 50,000€



Lower Deck
4-Cabin Layout



Lower Deck
3-Cabin Layout

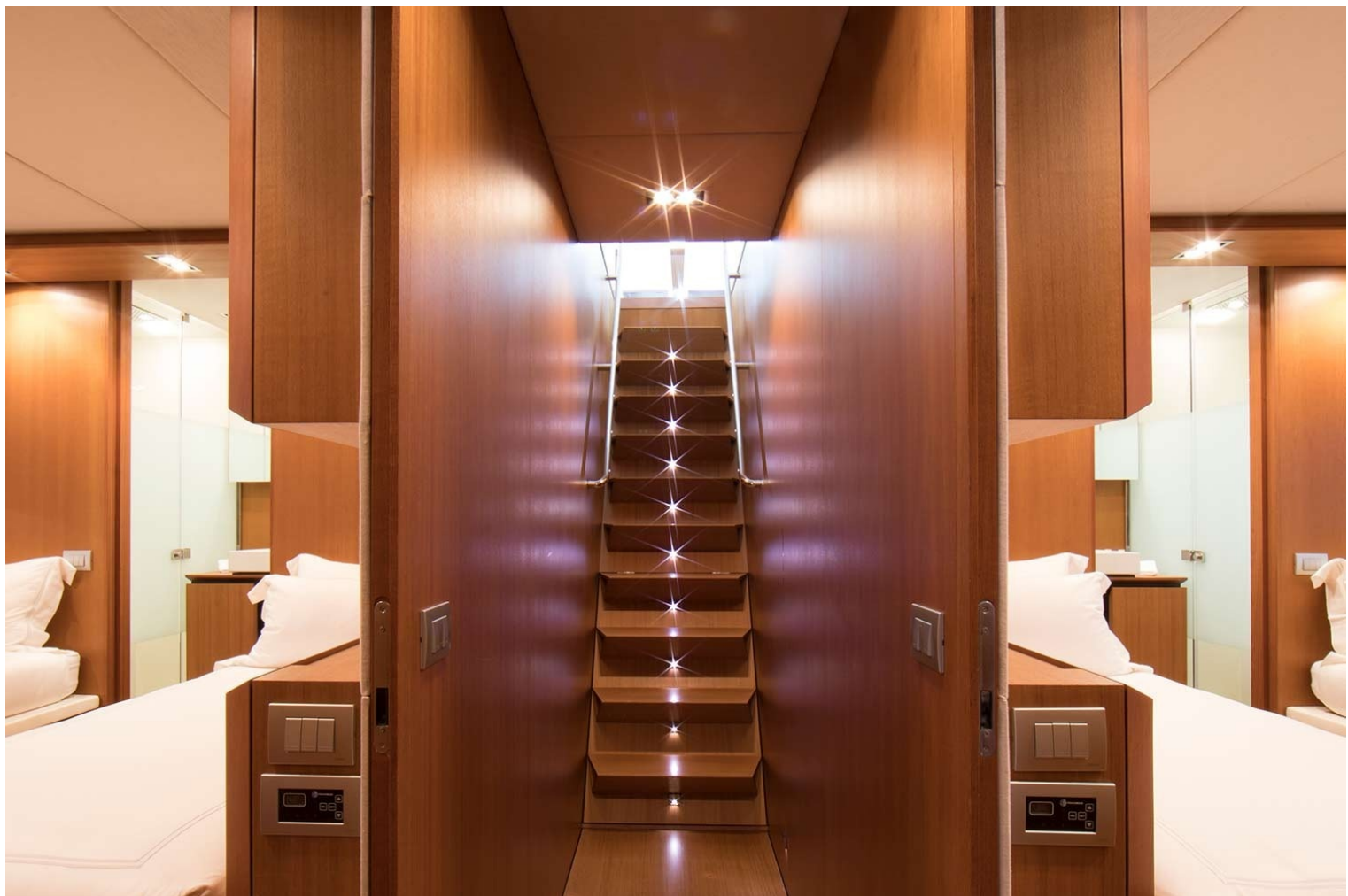




































FIND US

45 rue Grimaldi
98000 Monaco

Info@dynamiqbrokerage.com

© 2025 DYNAMIQ YACHTS, SARL. All rights reserved.