



M/Y PLANET NINE

Planet Nine was designed by talented Tim Heywood, dedicated to be most efficient and one of the world's foremost explorer yachts. She is Ice Class and comes with a superb specification including her MD 902 Explorer helicopter, hangar and landing pad. She can comfortably accommodate up to 12 guests in 9 cabins.



LENGTH

73m



BEAM

12.8m



DRAFT

3.6m



MAX SPEED

16kn



GUESTS/CABINS

16/8



NUMBER OF CREW

22



SHIPYARD

Admiral



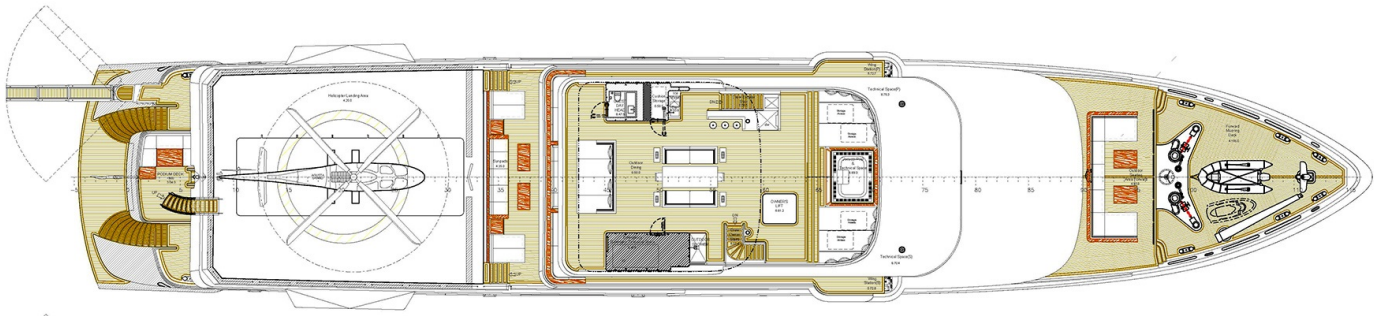
YEAR BUILT

2018

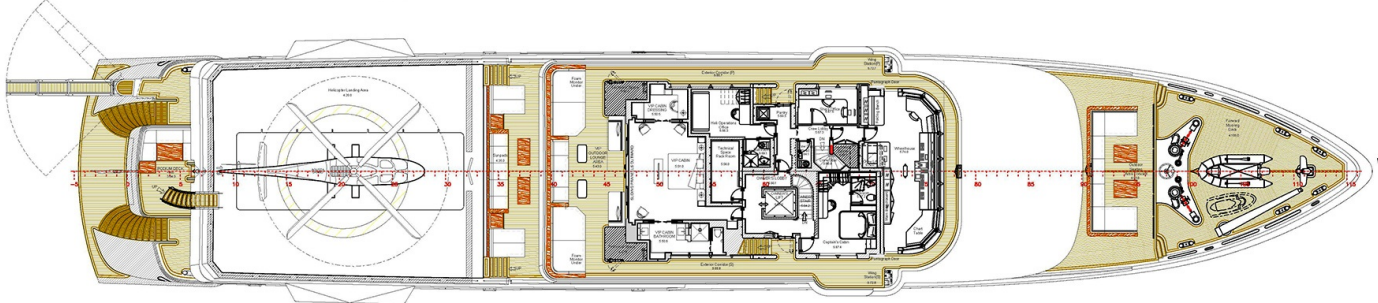


WEEKLY CHARTER RATE

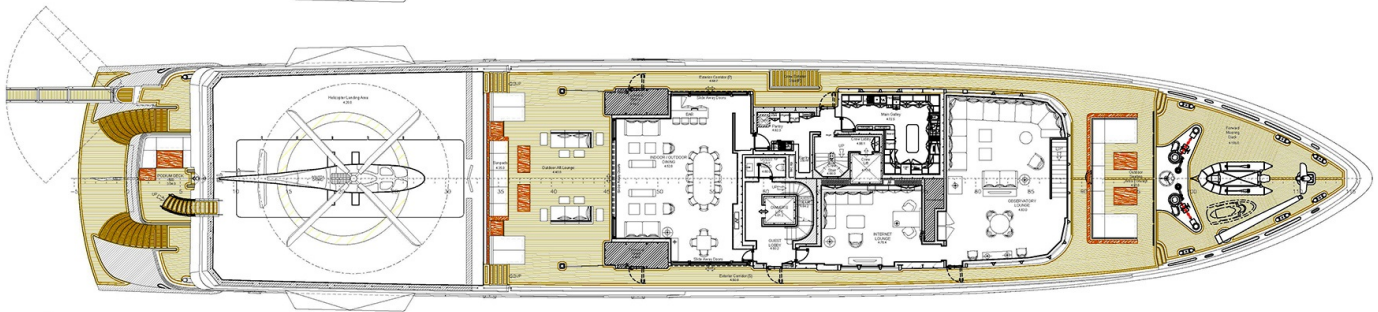
From 650,000€



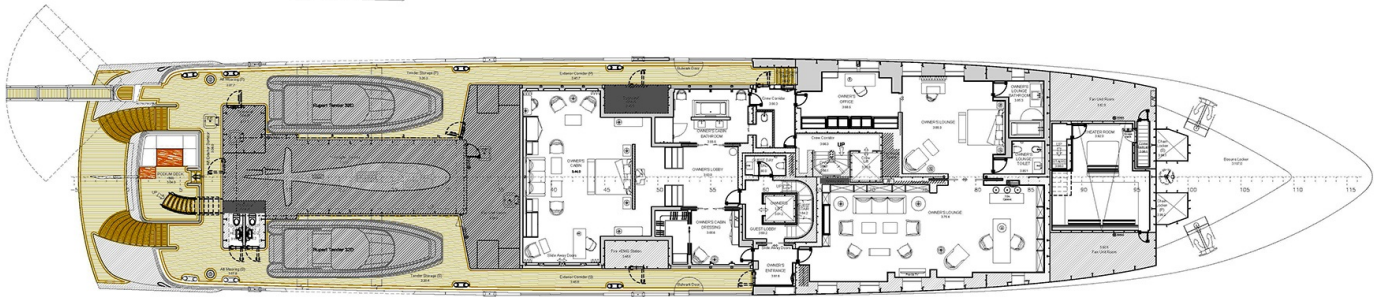
SUN DECK
at 15200 from B.L.



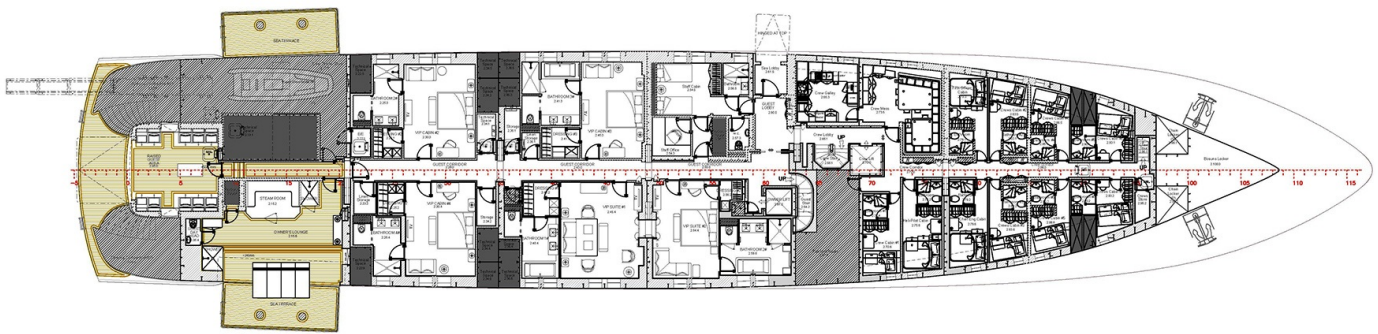
WHEELHOUSE DECK
at 12500 from B.L.



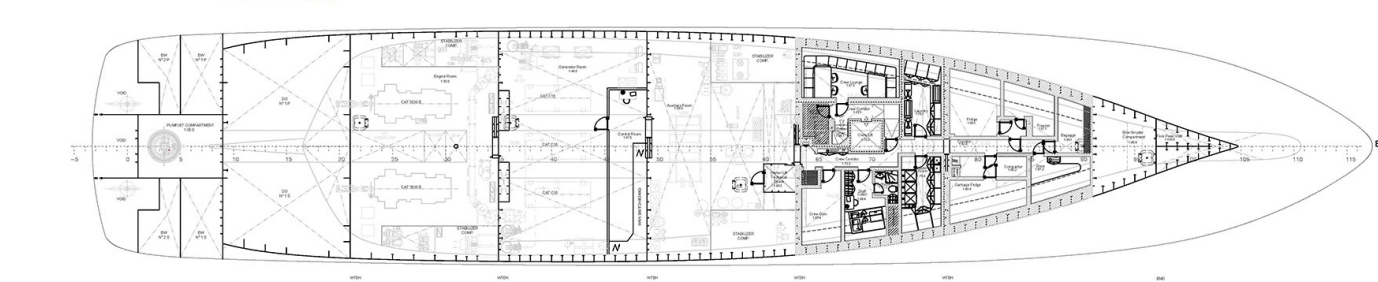
UPPER DECK
at 9500 from B.L.



MAIN DECK
at 7000 from B.L.



LOWER DECK
at 4200 from B.L.



ENGINE ROOM DECK
at 1500 from B.L.























FIND US

45 rue Grimaldi

98000 Monaco

Info@dynamiqbrokerage.com

© 2025 DYNAMIQ YACHTS, SARL. All rights reserved.