



M/Y JADE 959

A versatile family cruiser with global exploration capabilities. Spread over five decks, this yacht offers many opportunities for accommodation and entertainment, both inside and outside. However, the *piece de resistance* of this yacht is it's 4000 nm range and ice class hull. Meaning this yacht is comfortable cruising both in the islands of Fiji and near the glaciers of Greenland. This is truly a world class, explorer offering unparalleled opportunities for global exploration.



LENGTH

51.8m



BEAM

9.4m



DRAFT

3m



MAX SPEED

16kn



MAIN ENGINES

2x MTU 2717



GUESTS/CABINS

12/6



NUMBER OF CREW

10



SHIPYARD

Jade Yachts



YEAR BUILT

2014



PRICE

16,800,000€

JADE YACHTS

JADE 170' MOTOR YACHT

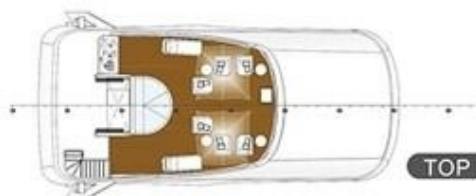
959



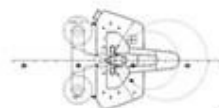
OUTBOARD PROFILE

PRINCIPAL PARTICULARS

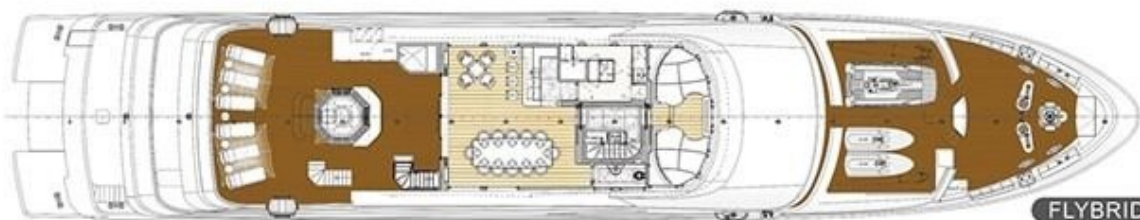
Length (LOA)(MLD)	51.80M
Length (LWL)(MLD)	46.13M
Length (LBP)(MLD)	44.25M
Breadth (MLD)	9.40M
Depth (MLD)	5.11M
Draught Designed (MLD)	2.90M
Displacement (FULL LOAD)	614MT
Maximum Speed	18.0KTS
Guests	10PS
Total Compliment	21PS
Classification	Bvi+Hull+Mach Charter Yacht - Motor-S/A ICE Class ID



TOP LOFT



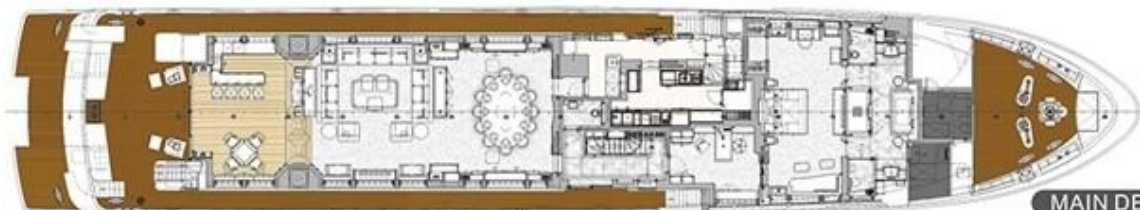
MAST



FLYBRIDGE DECK



UPPER DECK



MAIN DECK



LOWER DECK

















FIND US

45 rue Grimaldi

98000 Monaco

Info@dynamiqbrokerage.com

© 2025 DYNAMIQ YACHTS, SARL. All rights reserved.