



M/Y JASMINE

Jasmine is a 22.8m luxury yacht that was delivered in 2016 and built by the dutch shipyard Acico Yachts in 2011. The naval architecture was developed by Christian Bolinger and design created by Olivier F. Van Meer. Jasmine can comfortably sleep up to 6 guests in 3 spacious cabins while being accommodated by 2 members of crew. Her maximum speed is 20kn and she has an outstanding range of 3000nm at 11kn. The range of Jasmine makes it a special boat ideal for longer cruises.



LENGTH

22.8m



BEAM

6.2m



DRAFT

1.6m



MAX SPEED

20kn



MAIN ENGINES

2 x Volvo Penta,
596 kW



GUESTS/CABINS

6/3



NUMBER OF CREW

2



SHIPYARD

Acico Yachts



YEAR BUILT

2011



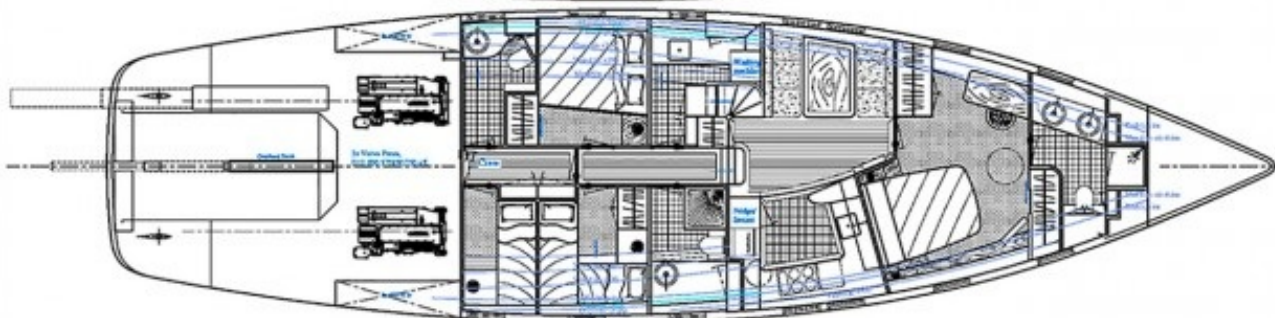
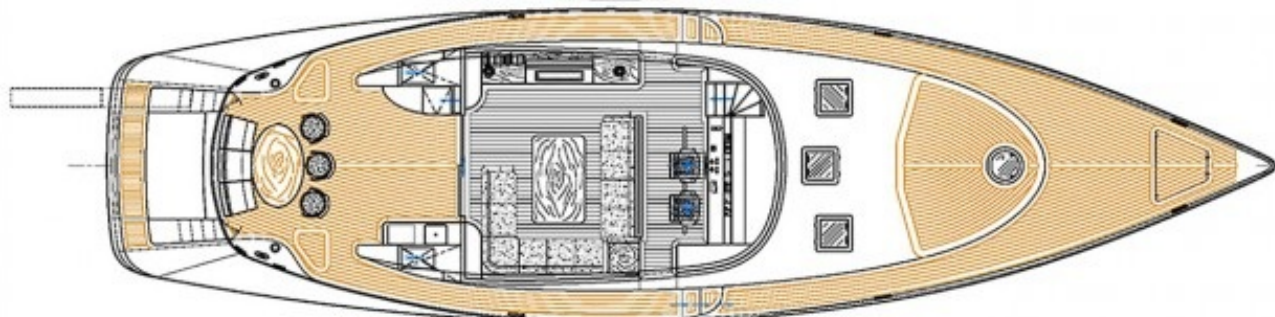
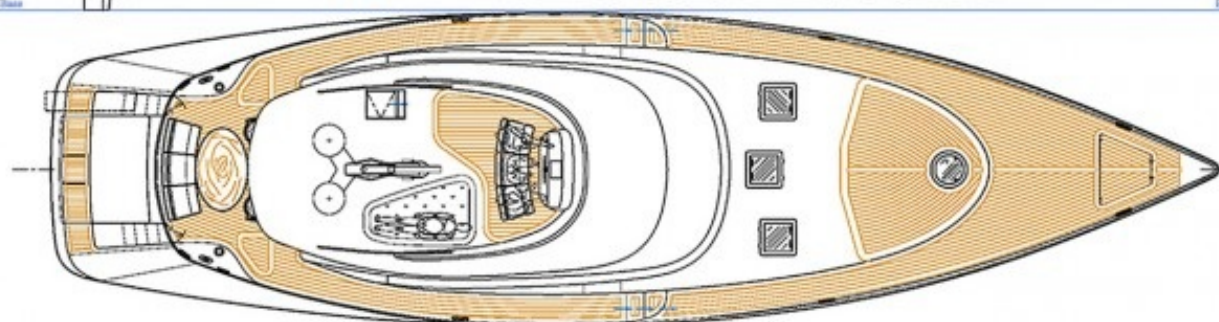
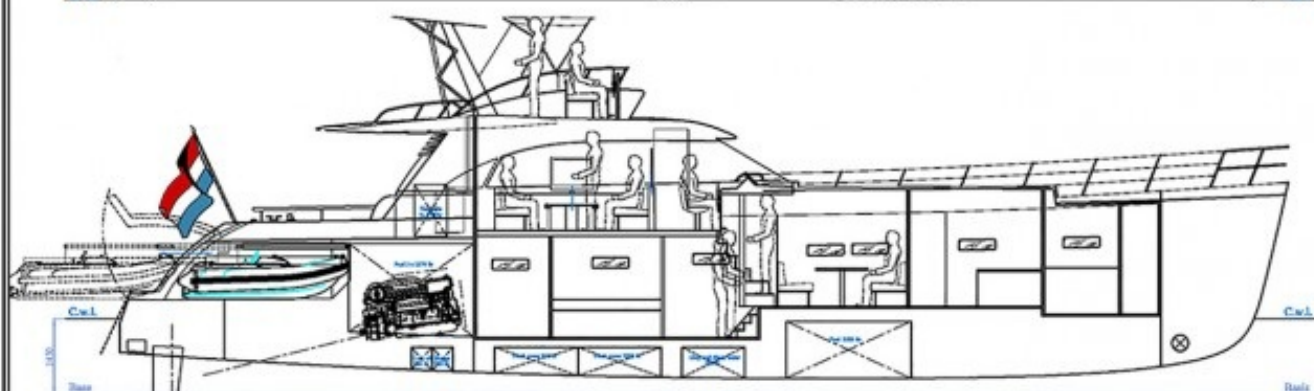
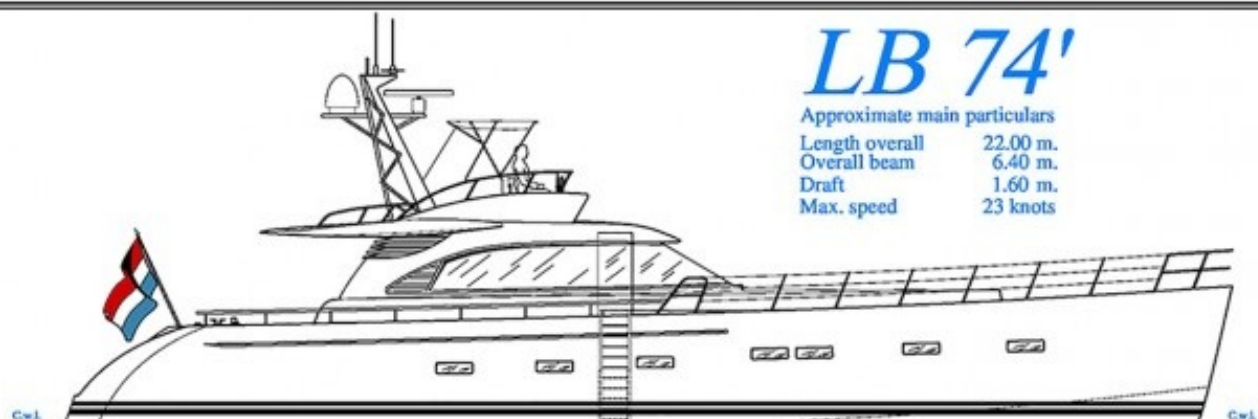
PRICE

2,100,000€

LB 74'

Approximate main particulars

Length overall	22.00 m.
Overall beam	6.40 m.
Draft	1.60 m.
Max. speed	23 knots



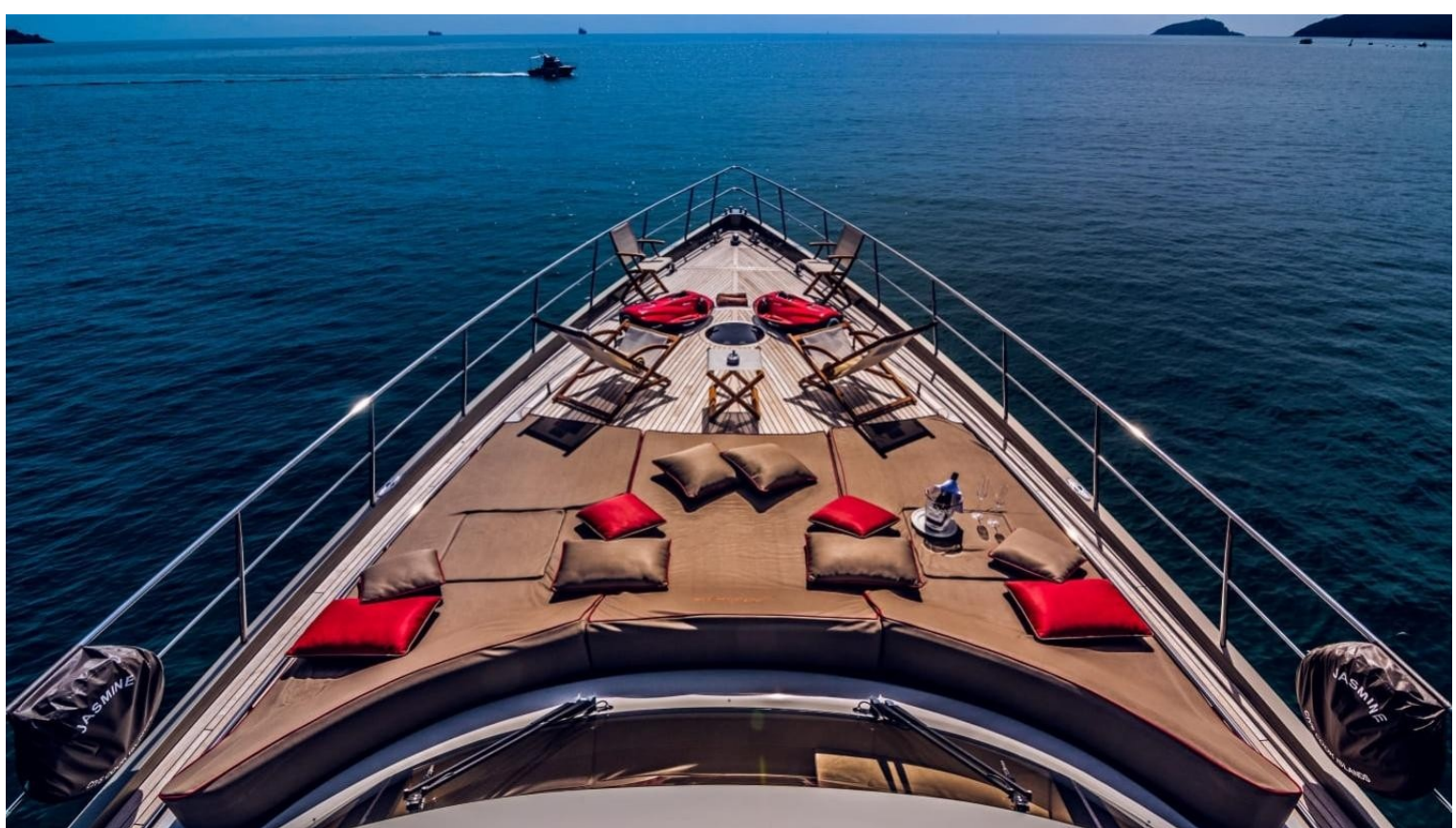
Olivier van Meer

DESIGNERS | NAWAL ARCHITECTS | PROJECT MANAGEMENT





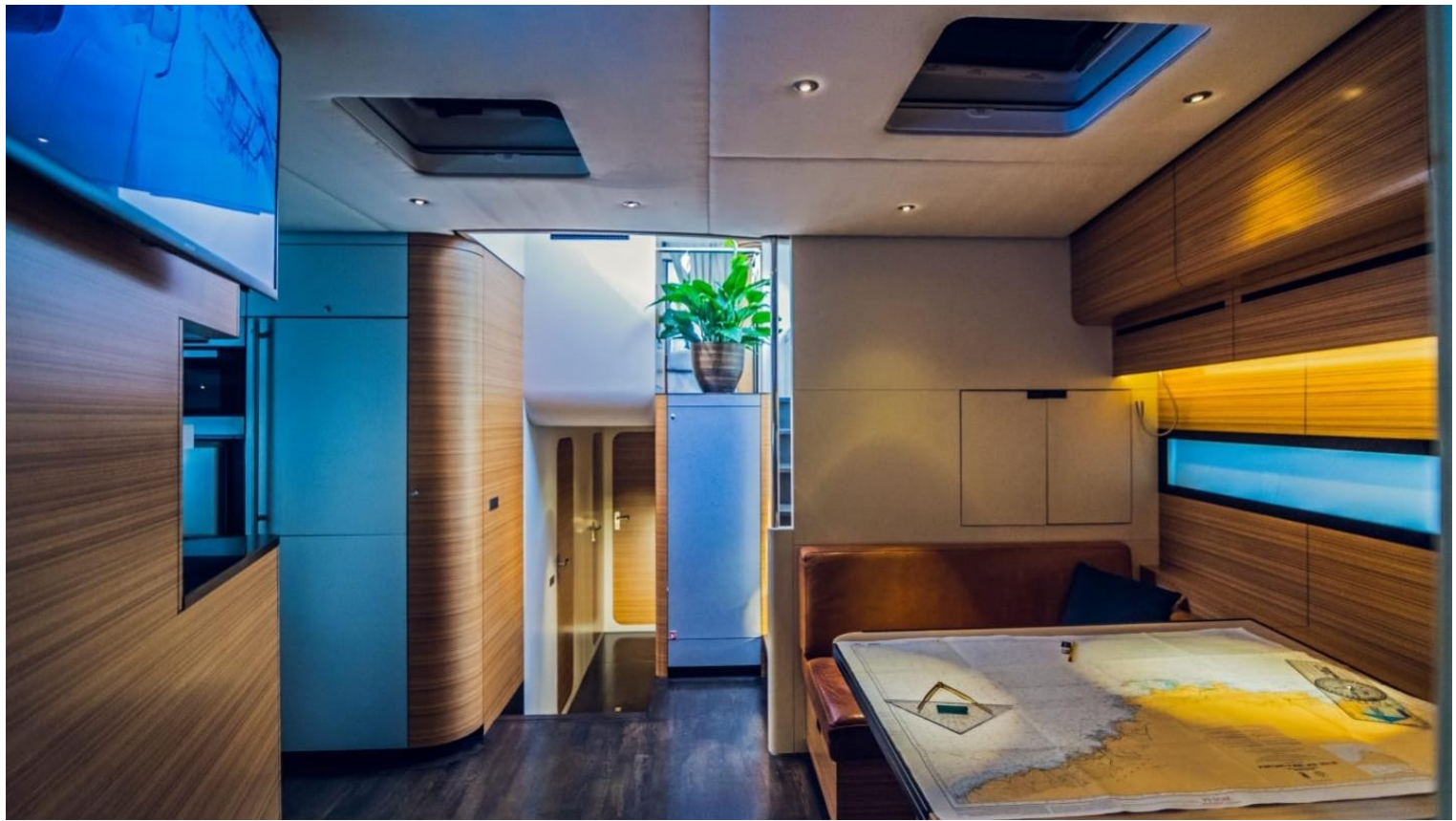


















FIND US

16 Quai Jean-Charles Rey, 98000 Monaco

+377 9770 8388

Info@dynamiqbrokerage.com

© 2019 DYNAMIQ YACHTS, SARL. All rights reserved.