



# M/Y SAMSARA

SAMSARA is a RINA classed expedition motor yacht with an unrestricted navigational notation. She was commissioned in 2017/18 in Fort Lauderdale. She was designed to MCA / Lloyds Class 100A1 by noted naval architect John Overing. Samsara is an extremely efficient, stable, and safe boat due to her full displacement, hydrodynamic efficient, round bottom, steel hull (LR steel, 8 -16mm) and the light-weight marine grade aluminum superstructure.



LENGTH

30m



BEAM

7m



DRAFT

2m



MAX SPEED

14kn



MAIN ENGINES

2x Caterpillar 605  
hp



GUESTS/CABINS

8/4



NUMBER OF CREW

4



SHIPYARD

Maxi Marine



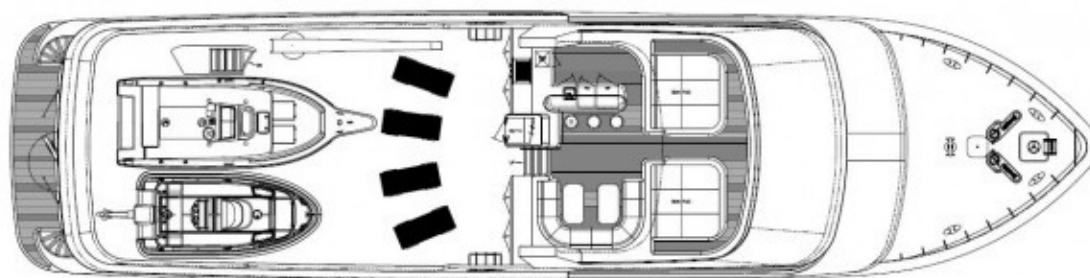
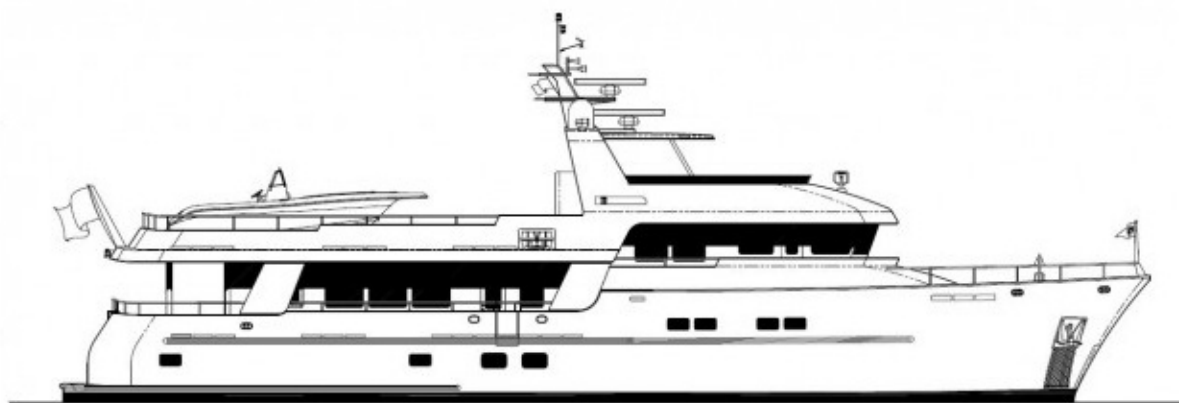
YEAR BUILT

2017

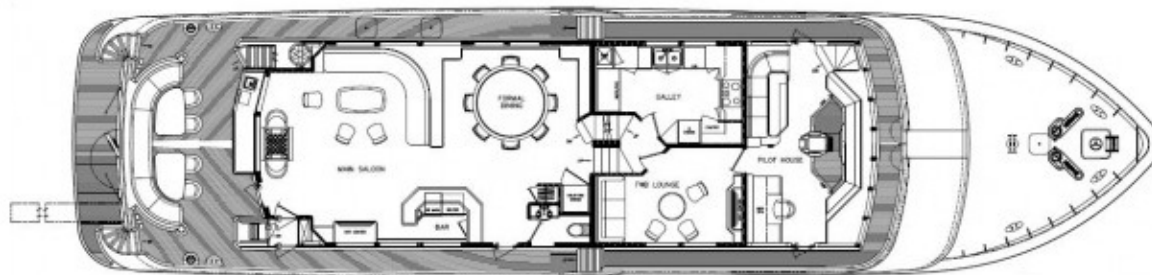


PRICE

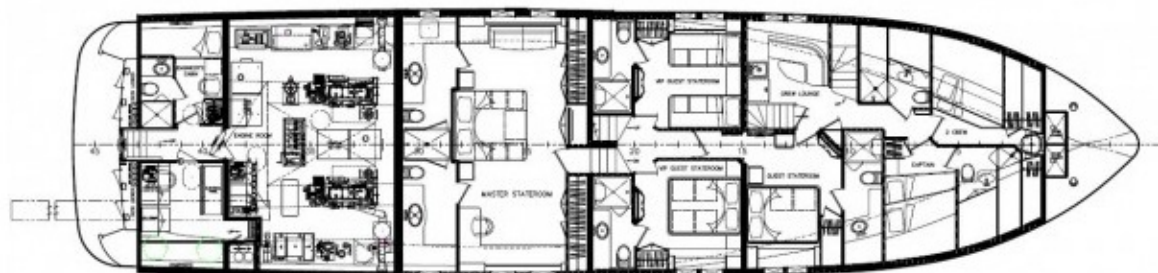
7,170,000€



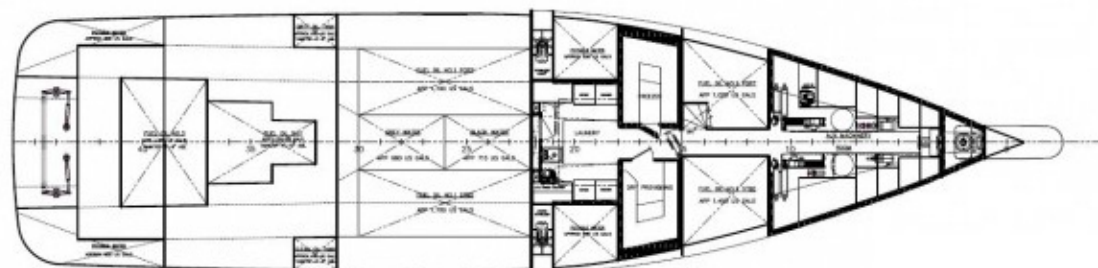
01 DECK & FLYBRIDGE



MAIN DECK



BELOW DECK



LOWER LEVEL





























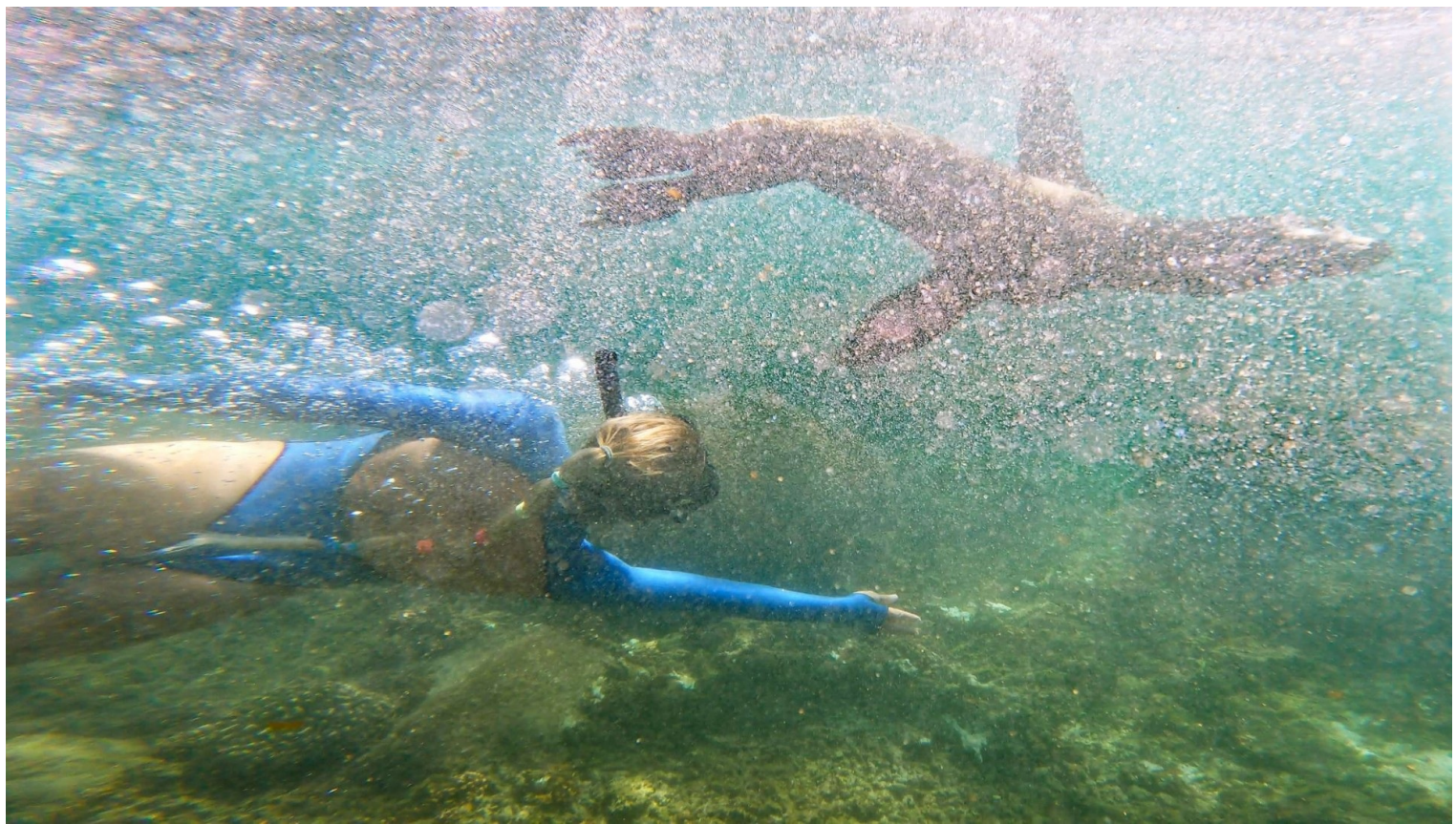


























## FIND US

45 rue Grimaldi

98000 Monaco

[Info@dynamiqbrokerage.com](mailto:Info@dynamiqbrokerage.com)

© 2025 DYNAMIQ YACHTS, SARL. All rights reserved.