



**D Y N A M I Q**

GRAN TURISMO TRANSATLANTIC SERIES

***GTT 165***

## **RELAXATION REDEFINED. EXPLORE & REVITALISE.**

This innovative flagship of the Dynamiq GTT range, the GTT 165 (50m), is designed for those seeking ultimate relaxation. Six spacious staterooms accommodate 12 guests, with the impressive owner's suite featuring two side structural balconies and a freestanding bathtub for private moments at sea. The GTT 165 boasts unique Maldivian-inspired interior styling with an exclusive selection of furnishings and accessories from Bottega Veneta. From indulging in a day of relaxation in the onboard Spa to enjoying cosy family meals by the open galley, the GTT 165 is a superyacht that has it all. Large sliding doors on the upper deck allow guests to transform the area from a spacious indoor-outdoor space to a sophisticated dining area, with the upper salon fireplace creating the perfect intimate ambience. The aft sundeck is dedicated to wellness, with a 360-degree view gym and maximum space for fitness, while the state-of-the-art spa centre is found on the lower deck with direct access to the water.

Engineered in the Netherlands by the experts at Van Oossanen Naval Architects, the GTT 165 has a robust, fast-displacement hull built from an aluminium alloy, making her a super-efficient ocean-going yacht with a range of 4,000 nm. Modern technology is at the heart of the Dynamiq GTT flagship, not only resulting in optimum performance and comfort but the ability to undertake multiple cruising seasons with no surprises along the way. At the owner's request, a hybrid propulsion system can be chosen for ultimate efficiency and silent operation. The GTT 165 complies with the strictest commercial requirements, ensuring impeccable safety and the attractive option of commercial charter operations.



***GTT 165***



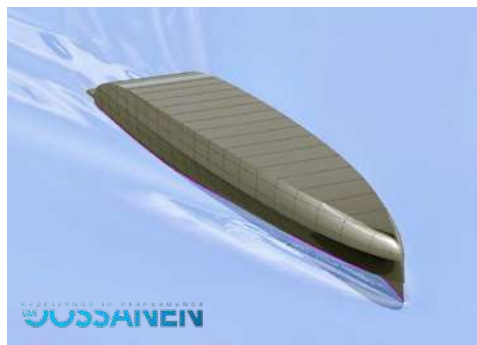


*GTT 165*



# KEY FEATURES

**GTT 165**



## Full aluminium round bilge fast displacement hull

Drawn by the famous Dutch naval architects Van Oossanen, the GTT 165 unique hull features a round-bilge shape for remarkably low resistance and low fuel consumption, while still being capable of high speeds. The design decreases vertical accelerations in the hull, which translates into a far more comfortable motion when sailing. The avant-garde bow shape with a vertical stem maximises the waterline length, enhancing performance even more. To keep spray levels low, an integrated spray rail deflects water hitting the bow area. Built entirely from marine grade aluminium, the GTT 165 hull guarantees unparalleled comfort and safe operation for more than 25 years.



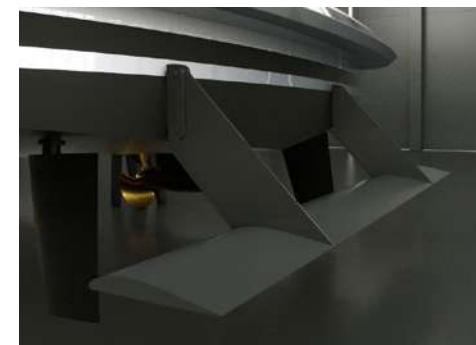
## Robust full aluminium construction

Certified marine-grade 5083 aluminium and stronger 5383 Sealium, a lightweight alloy that weighs three times less than steel, is used for Dynamiq GTT 165 hull and superstructure. A lighter hull provides a better performance, shallower draft, lower fuel consumption. Another benefit is that aluminium guarantees a stiff, robust and vibration-free vessel that is very comfortable and behaves well in a heavy swell or choppy seas. The strength-to-weight ratio of aluminium is equivalent to that of steel and there is much less risk of serious damage in case of a collision than with a fibreglass hull. Unlike composite materials, aluminium is fully recyclable, odourless, does not rust or creak at sea and does not burn in the atmosphere.



## Curved fin stabilizers by Side Power

Vector Fins stabilisers dramatically reduce roll as well as undesired yaw and sway motions caused by active fins. Their vertical concave shape creates a net force direction, both in cruising and at-anchor modes, so the work is more up-down instead of side-to-side. By changing the net force angle, this also increases the leverage arm around the boat's rolling point, further increasing the physical forces that work on the boat to reduce roll. This provides more efficient stabilisation per fin size, which means that drag and power consumption are a lot less than with other fins offering comparable roll reduction.



## Hull Vane®

The Hull Vane® is a patented fixed foil located below the stern of a ship. Developed by renowned Dutch naval architects Van Oossanen it influences the stern wave pattern and creates hydrodynamic lift, which is partially oriented forward. This innovation leads to significant reduction of the hull's resistance, which in turn enables the installation of much smaller engines, fuel savings and longer range. The Hull Vane® also improves stability under way and at anchor, while reducing both pitching and yawing motions.



## XIR glass

The GTT 165 features next-generation laminated XIR glass that allows maximum light transmission, while keeping solar heat gain at bay. Harmful UV rays are almost completely blocked, and heat transmission reduced by 60%. The result is an interior that offers the wide panoramas of large windows without the penalty of heat build-up. This means significantly reduced air-conditioning loads and therefore lower running costs. The glass manufacturer is Isoclima, an Italian high-tech company that also supplies glass for luxury automobiles such as Bentley, McLaren, Mercedes and BMW.





# KEY FEATURES

*GTT 165*



Bottega Veneta exclusive furniture collection



Japanese Teppanyaki on Sundeck



Upper saloon fireplace



Cinema room & High-end audio by Bowers & Wilkins





*GTT 165*



# MAIN SPEC

Interior deck heights

2.2 m / 7' 3"	Sun deck
2.2 m / 7' 3"	Upper deck
2.2 m / 7' 3"	Main deck
2.15 m / 7' 1"	Lower deck



**GTT 165**

Length overall:	50 m / 165'
Beam:	9 m / 29' 6"
Draft:	2 m / 6' 6"
Material:	Full aluminium, 5083
Hull type:	Round bilge, fast displacement
Tonnage:	450 GT

Max speed:	19 knots
Main engines:	2x MAN V12-1400, 1,029 kW

Max speed GTT 165S (option):	23 knots
Main engines:	2x MTU 16V 2000 M92, 1,630 kW

Propulsion:	2x 1,450 mm 5 blades props
Range:	2,650 nm (Transat) @ 17 knots 4,000 nm @ 12 knots

Generators:	2x 100 kW, Kohler
Stabilisers:	2x 3.5 m² Stabilizer fins, zero speed + Hull Vane®

Fuel:	50,000 l / 13,210 US gallons
Fresh water:	17,500 l / 4,625 US gallons

Guests:	12 in 6 cabins / 10 in 5 cabins
Crew:	9 in 5 cabins

Tender:	Castoldi Jet 21' (6.4 m)
---------	--------------------------

Class:	RINA commercial, LY4 compliant
Notations:	RINA Comfort Class, RINA Green Star

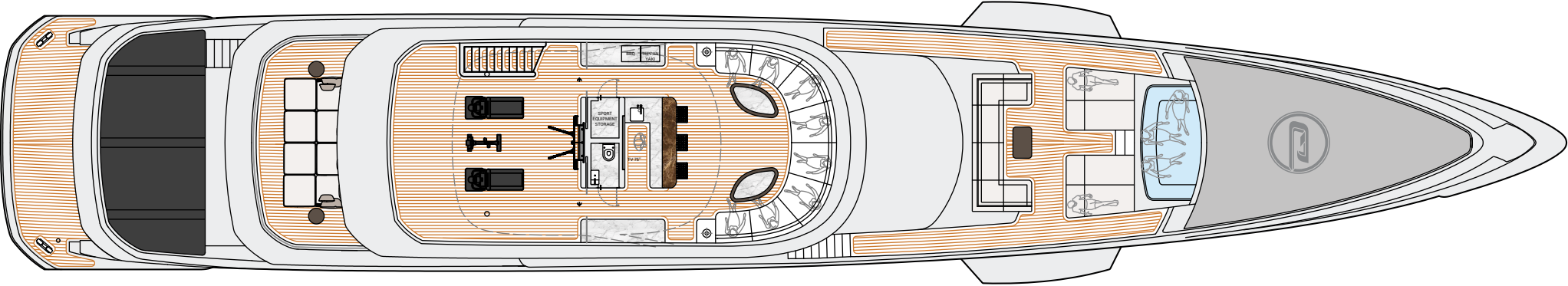
Naval architecture:	Van Oossanen
Exterior design:	Dobroserdov Design
Interior design:	Giuseppina Arena / Dynamiq



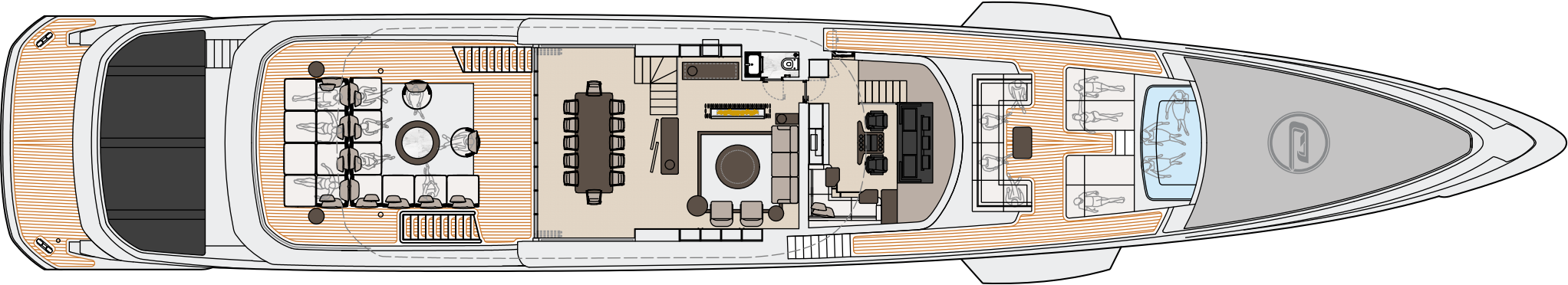


# DECK PLANS

***GTT 165***



**Sun deck**



**Upper deck**

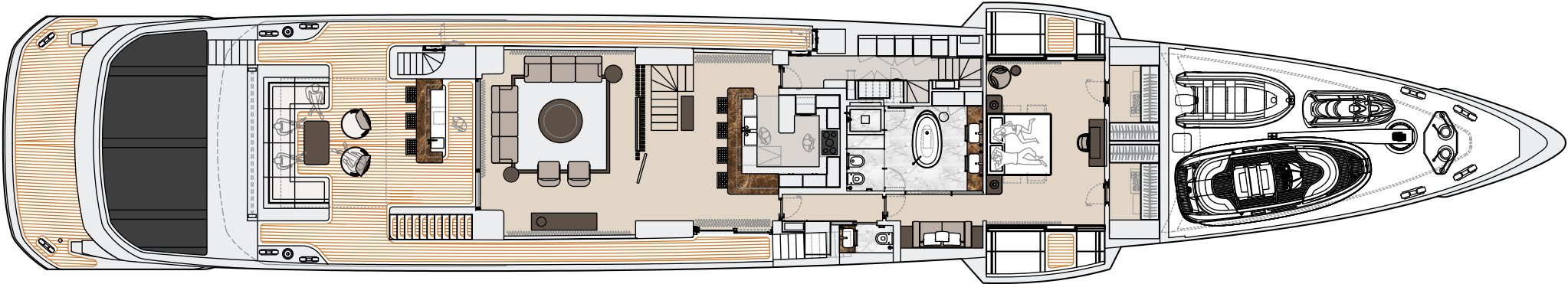
This drawing is the property of Dynamiq Yachts SARL and is not to be modified, used or reproduced in whole or part without written permission.



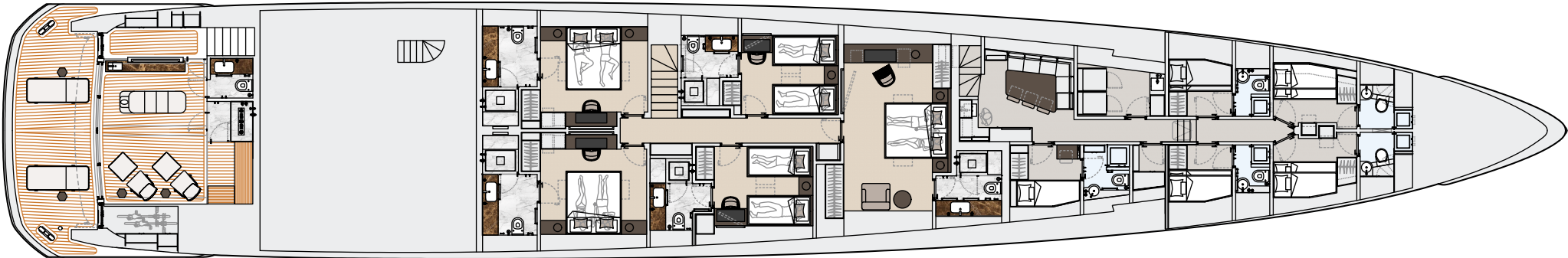
# DECK PLANS

6 cabins

*GTT 165*



Main deck



Lower deck

This drawing is the property of Dynamiq Yachts SARL and is not to be modified, used or reproduced in whole or part without written permission.



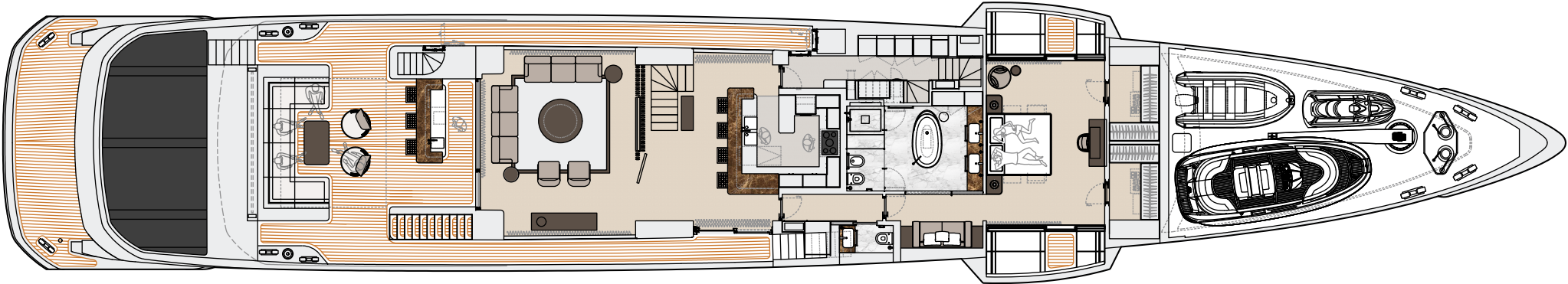


# DECK PLANS

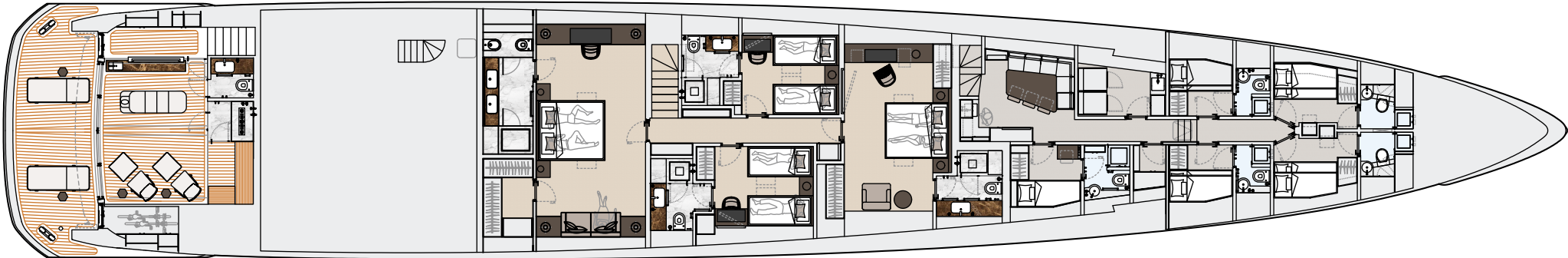
*GTT 165*

5 cabins

(2nd Master cabin)



Main deck



Lower deck





***GTT 165***





*GTT 165*





GTT 165





*GTT 165*



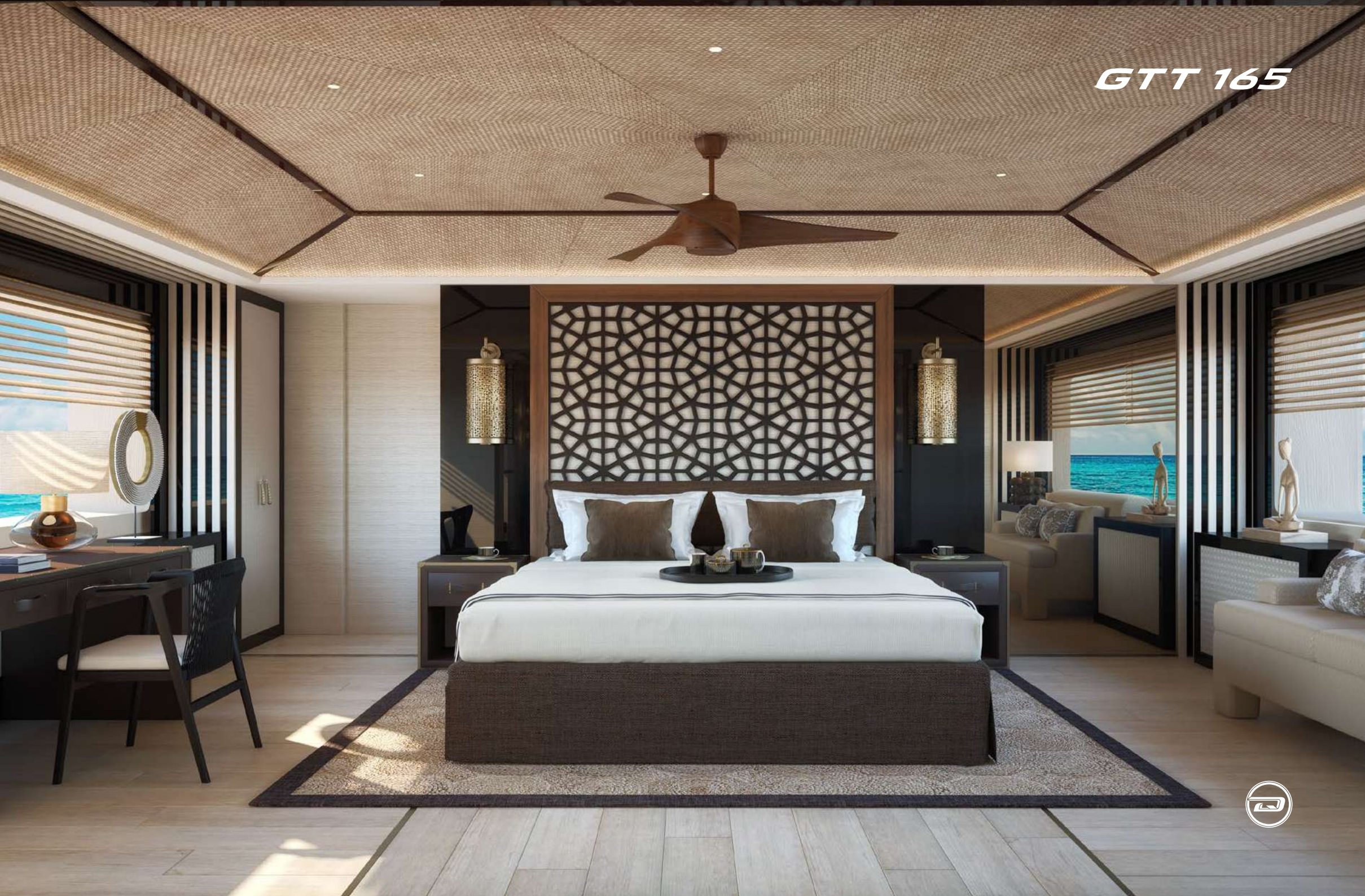


*GTT 165*





*GTT 165*





*GTT 165*





*GTT 165*





*GTT 165*





*GTT 165*





*GTT 165*





# PRICE, OPTIONS & PAYMENT TERMS

***GTT 165***

**BASE PRICE:** € 24,750,000

<b>OPTIONS*:</b>	
<input type="checkbox"/> GTS version (23 knots)	€ 750,000
<input type="checkbox"/> Hybrid (2x 100 kW e-motors + 100 kWh battery pack)	€ 725,000
<input type="checkbox"/> Hull Vane®	€ 385,000
<input type="checkbox"/> «Silent» package (extra insulation, double glass)	€ 215,000
<input type="checkbox"/> Upper deck Sky Lounge	€ 385,000
<input type="checkbox"/> Metallic paint for hull and superstructure	€ 125,000
<input type="checkbox"/> Minotti for Dynamiq package	€ 275,000
<input type="checkbox"/> Fine marbles in luxury areas	€ 100,000
<input type="checkbox"/> Tender Castoldi 21' (full options)	€ 150,000
<input type="checkbox"/> Bowers & Wilkins hi-end audio package	€ 49,000
<input type="checkbox"/> VSAT Intellian V100G antennae	€ 47,000
<input type="checkbox"/> Ribbon 45 Reventon (chase boat)	€ 1,200,000

<b>PAYMENT TERMS:</b>	
Contract signature	20%
Keel laying	20%
Main engines installed	25%
Interior installation start	20%
Launch	10%
Delivery	5%

**BUILD TIME:**  
28 months

\* More options are available at [bedynamiq.com](http://bedynamiq.com)





*GTT 165*





*GTT 165*





# STRINGENT STANDARDS

***GTT 165***

In order to create a perfect yacht, from the outset Dynamiq decided to comply with the strictest requirements for comfort and safety. Every Dynamiq yacht is built in accordance with the latest Large Yacht Code (LY4) commercial regulations. This not only makes them ultra safe, but also means they can be chartered to provide an income for their owners.

Dynamiq and its partners are deeply aware of the need for sustainability. We strongly believe that eco-friendly yachts are a requirement for today's owners and their guests. That is why our yachts feature fuel-efficient hulls and reduced air-conditioning loads thanks to special XIR laminated glass.

We are genuinely committed to protecting the world's oceans, coastlines and the global ecology by reducing fuel consumption and emissions through innovative waste management solutions. All Dynamiq yachts are designed and built to meet the strict environmental standards of RINA's Green Star Plus notation.

Moreover, intensive research into reducing sound and vibration and the use of modern insulation materials create a near silent yacht with exceptional acoustic privacy between cabins. These elevated levels of comfort for passengers and crew have been rewarded with RINA's prestigious Comfort Class notation.





# THE SHIPYARD

Dynamiq is a private shipyard founded in 2014 and owned by yacht broker and designer Sergei Dobroserdov. His main strategy with Dynamiq was to create a well-organised and owner/broker-friendly facility where clients and their reps can enjoy a creative and transparent construction process.

Dynamiq is the only shipyard in Italy building yachts to North European standards that are 100% created by leading naval architects and structural or mechanical engineering companies in the Netherlands. Dynamiq production is located in the picturesque area of Massa on Italy's Tuscan coast. This modern and high-tech facility is fitted out for building the full range of Dynamiq superyachts up to 50 metres in length with various powertrain options, including hybrid technology. The Dynamiq Yachts production facility offers the highest standards of working environment and quality control.

Come to Dynamiq if you want:

1. Original contemporary design;
2. Top-quality full-aluminum construction;
3. Complete Dutch engineering with naval architecture by Van Oossanen;
4. Top-class contractors and leading brand partners from interior design to high-end audio-visual;
5. Competitive Italian prices.





# DYNAMIQ RANGE

## THE GRAN TURISMO TRANSATLANTIC SERIES



Model	GTT 115	GTT 135	GTT 160	GTT 165
LOA	35.5 m / 115'	41 m / 135'	49.5 m / 162'	50 m / 165'
Beam	7.1 m / 23' 3"	8.2 m / 26' 11"	8.7 m / 28' 6"	9 m / 29' 6"
Draft	1.45 m / 4' 9"	1.8 m / 5' 11"	2 m / 6' 6"	2 m / 6' 6"
Max speed	21 knots	21 knots	17 knots	19 knots
Range	3,400 nm @ 10 knots	3,000 nm @ 12 knots	4,000 nm @ 10 knots	4,000 nm @ 12 knots
Engines	2x MAN, 1,213 kW	2x MAN, 1,213 kW	2x MAN i6, 537 kW	2x MAN V12, 1,029 kW
Hull / superstructure	Aluminium, 5083	Aluminium, 5083	Aluminium, 5083	Aluminium, 5083
Tonnage	199 GT	299 GT	399 GT	450 GT
Guests	10 in 5 cabins	11 in 5 cabins	12 in 6 cabins	12 in 6 cabins
Crew	6 in 3 cabins	6 in 3 cabins	8 in 4 cabins	9 in 5 cabins
Build time	16 months	16 months	24 months	28 months
Price	starting at 11,500,000 €	starting at 16,500,000 €	starting at 19,900,000 €	starting at 24,750,000 €





# DYNAMIQ RANGE

## THE GRAN TURISMO MEDITERRANEO SERIES



## THE GLOBAL SERIES

Model	GTM 90	GTM 90 Sportfisher	G 300	G 350	G 440
LOA	27,5 m / 90'	27,5 m / 90'	30.5 m / 100'	35 m / 114'	44 m / 144'
Beam	6.7 m / 21' 11"	6.7 m / 21' 11"	7.5 m / 24' 7"	8.5 m / 27' 10"	9.2 m / 30' 2"
Draft	1.75 m / 5' 9"	1.75 m / 5' 9"	1.45 m / 4' 9"	1.8 m / 5' 3"	2 m / 6' 6"
Max speed	31 knots	31 knots	19 knots	16 knots	17 knots
Range	900 nm @ 15 knots	900 nm @ 15 knots	3,000 nm @ 10 knots	3,100 nm @ 10 knots	5,000 nm @ 10 knots
Engines	3x Volvo Penta, 735 kW	3x Volvo Penta, 735 kW	2x MAN, 882 kW	2x MAN, 882 kW	2x MAN, 882 kW
Hull / superstructure	Aluminium, 5083	Aluminium, 5083	Aluminium, 5083	Aluminium, 5083	Aluminium, 5083
Tonnage	150 GT	150 GT	200 GT	299 GT	499 GT
Guests	8 in 4 cabins	8 in 4 cabins	10 in 4 cabins	10 in 5 cabins	10 in 5 cabins
Crew	4 in 2 cabins	4 in 2 cabins	4 in 2 cabins	6 in 3 cabins	7 in 4 cabins
Build time	18 months	18 months	22 months	22 months	28 months
Price	starting at 7,500,000 €	starting at 7,100,000 €	starting at 9,400,000 €	starting at 16,450,000 €	starting at 23,500,000 €








**LIVE SMART. BE DYNAMIQ.**



Via Massa Avenza 85, 54100 Massa, Italy

[www.bedynamiq.com](http://www.bedynamiq.com)

 @bedynamiq