

Global 450

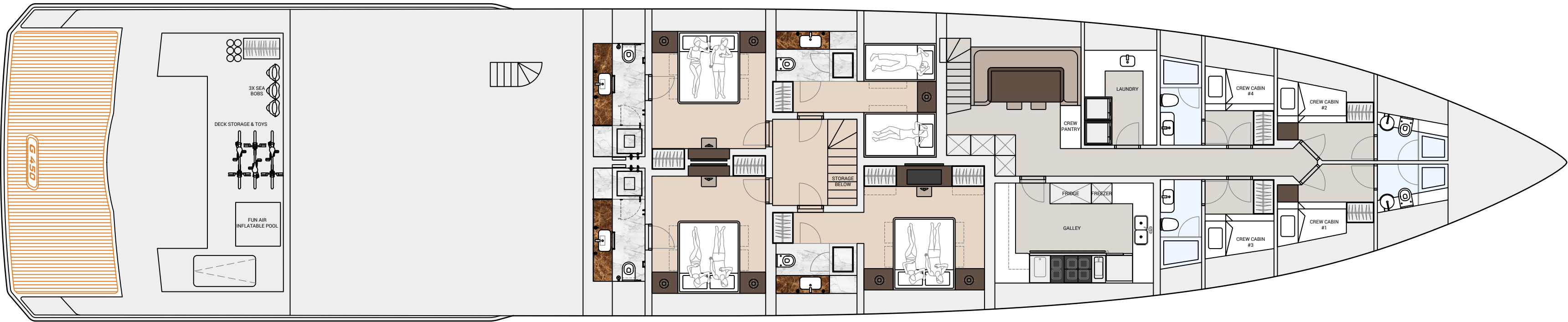
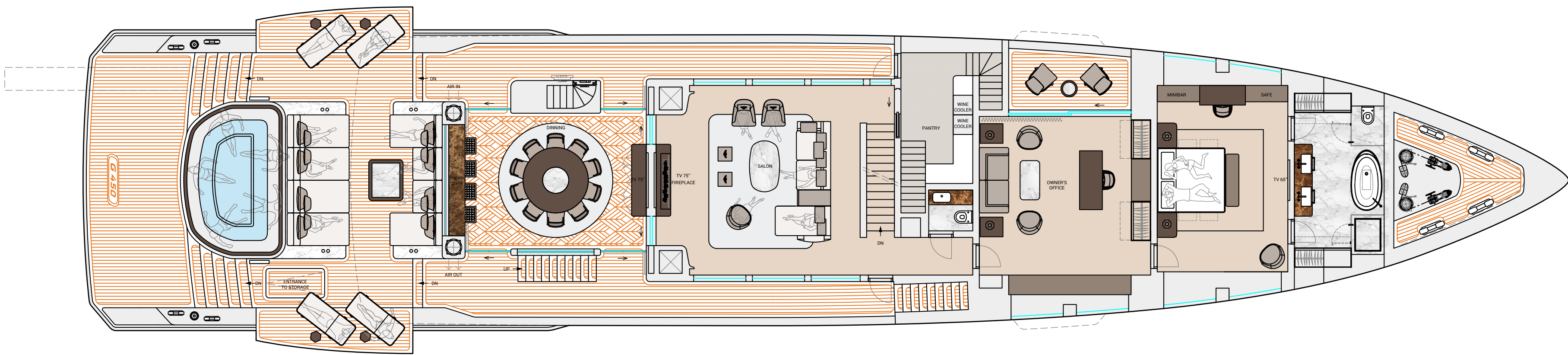
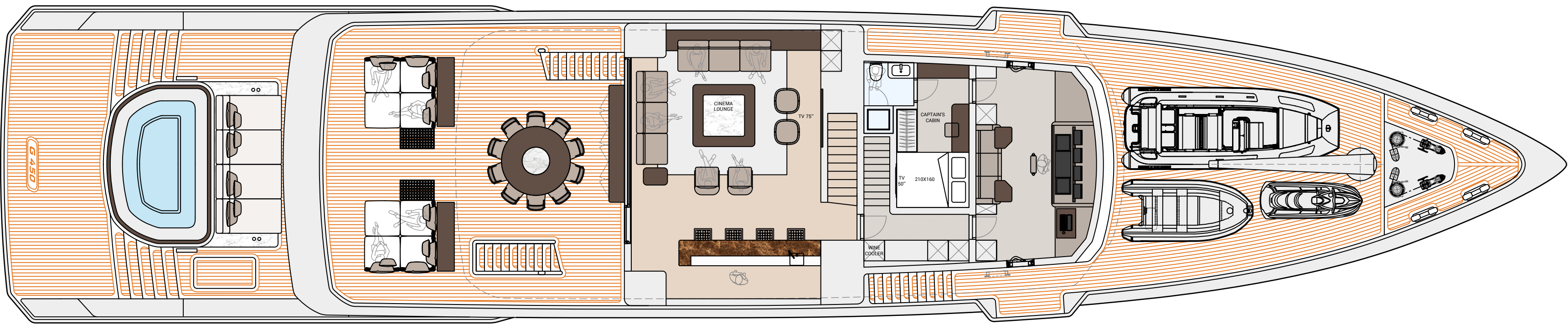
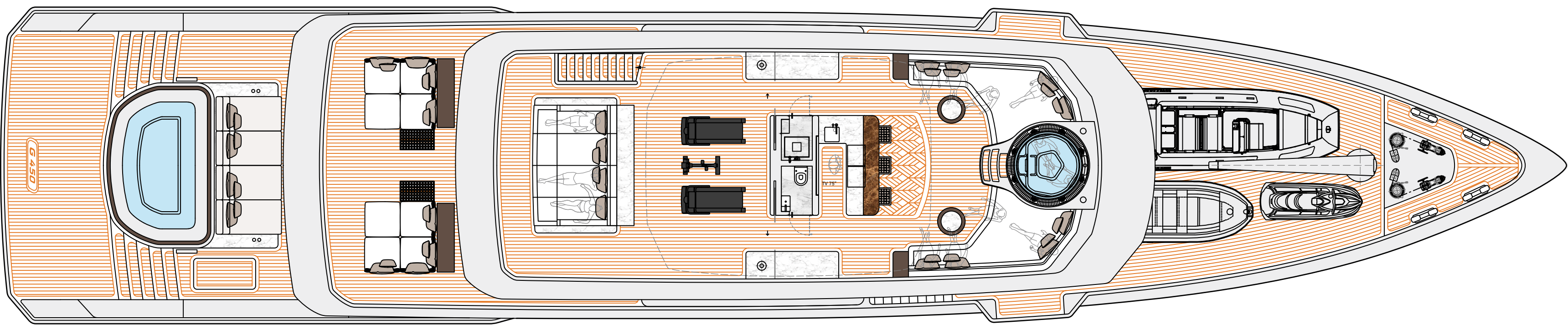
Clear interior heights
Between finished floor and ceiling

2.20 m

2.15 m

2.20 m

2.10 m



GLOBAL 450

Length overall:	45.5 m / 150'	Generators:	2x 100 kW, Kohler
Beam max:	9 m / 29' 6"	Stabilizers:	2x Stabilizer fins, CMC Marine
Draft:	2.5 m / 8' 2"	Aft foil:	Hull Vane®
Material:	High tensile steel / Aluminium		
Hull type:	Round bilge, fast displacement	Fuel:	50,000 l / 13,208 US gallons
Tonnage:	475 GT	Fresh water:	16,000 l / 4,226 US gallons
		Guests:	10 in 5 cabins
Max speed:	14 knots	Crew:	9 in 5 cabins
Main engines:	2x Volvo Penta D16-850, 625 kW (IMO Tier III)		
Range:	4,500 nm @ 10 knots	Tenders:	7.1 m / 23' (Castoldi 23'), Zodiac 380

Class:	BV commercial, unrestricted range
Notation:	BV Comfort Class (option), Green Passport (option)
Naval architecture:	Vripack Yacht Design
Exterior design:	Dobroserdov Design
Interior design:	Mark Berryman Design
Build time:	30 months

DYNAMIQ				45 Rue Grimaldi Monaco, 98000 +377 99 90 54 57 info@bedynamiq.com	
Project: DYNAMIQ GLOBAL 450				Project #: 4045MY	
Naval Architecture: Vripack Yacht Design				Shipyards: #	
Title: GENERAL ARRANGEMENT				Drawing #: 1	
Scale: 1/100	Drawn: I. B	Size: A1	Units: MM	Sheet: 01/01	Date: 20-11-2024
Copyright © by Dynamiq Sales & Charter LP. All original designs and conceptions are protected. Unauthorized reproduction, distribution, modification, public display, creation of derivative works, or any other use without written permission is strictly prohibited. Violations will be subject to legal action. For inquiries or licensing, please contact info@bedynamiq.com. Thank you for respecting our creative efforts and rights.					