



D Y N A M I Q

GLOBAL SERIES

G 330

BENTLEY EDITION

G 330

EXPLORE THE WORLD THE DYNAMIQ WAY.

The GLOBAL 330 is a no-compromise high-tech explorer vessel that boasts a fantastic interior volume of 270GT. The owner's stateroom is best in class with two fixed balconies on the forward main deck, and there are four comfy staterooms on the lower deck.

With an ultra wide beam of 8.5m and accommodation for 10 guests in 5 luxurious cabins, the G330 breaks with convention in terms of design, performance and technology.

Practical and fast, the yacht can cruise up to 4,000nm to visit the world's most beautiful and remote locations while providing the ultimate adventure experience for all the family.



G 330



KEY FEATURES

G 330



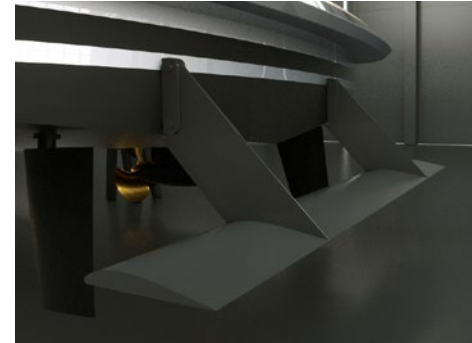
Full aluminium round bilge fast displacement hull

Drawn by the famous Dutch naval architects Van Oossanen, the G330 unique hull features a round-bilge shape for remarkably low resistance and low fuel consumption, while still being capable of high speeds. The design decreases vertical accelerations in the hull, which translates into a far more comfortable motion when sailing. The avant-garde bow shape with a vertical stem maximises the waterline length, enhancing performance even more. To keep spray levels low, an integrated spray rail deflects water hitting the bow area. Built entirely from marine grade aluminium, the G330 hull guarantees unparalleled comfort and safe operation for more than 25 years.



Curved fin stabilizers by Side Power

Vector Fins stabilisers dramatically reduce roll as well as undesired yaw and sway motions caused by active fins. Their vertical concave shape creates a net force direction, both in cruising and at-anchor modes, so the work is more up-down instead of side-to-side. By changing the net force angle, this also increases the leverage arm around the boat's rolling point, further increasing the physical forces that work on the boat to reduce roll. This provides more efficient stabilisation per fin size, which means that drag and power consumption are a lot less than with other fins offering comparable roll reduction.



Hull Vane®

The Hull Vane® is a patented fixed foil located below the stern of a ship. Developed by renowned Dutch naval architects Van Oossanen it influences the stern wave pattern and creates hydrodynamic lift, which is partially oriented forward. This innovation leads to significant reduction of the hull's resistance, which in turn enables the installation of much smaller engines, fuel savings and longer range. The Hull Vane® also improves stability under way and at anchor, while reducing both pitching and yawing motions.



XIR glass

The G330 features next-generation laminated XIR glass that allows maximum light transmission, while keeping solar heat gain at bay. Harmful UV rays are almost completely blocked, and heat transmission reduced by 60%. The result is an interior that offers the wide panoramas of large windows without the penalty of heat build-up. This means significantly reduced air-conditioning loads and therefore lower running costs. The glass manufacturer is Isoclima, an Italian high-tech company that also supplies glass for luxury automobiles such as Bentley, McLaren, Mercedes and BMW.



KEY FEATURES

G 330



**Transatlantic range of 3100 nm
@ 10 knots**



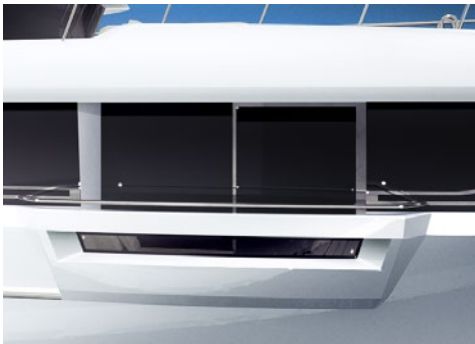
Fun Air inflatable pool, 5 x 6 meters



Beach club with sauna



Interior volume of 270 gross tons



**Owner's stateroom with two fixed
balconies**



**High-end audio by
Bowers & Wilkins**



Japanese Teppanyaki on sundeck



Main saloon fireplace



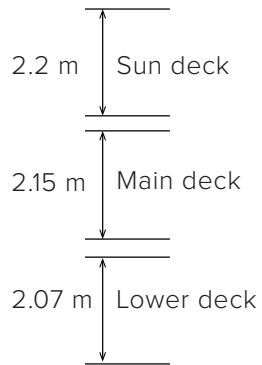
G 330



MAIN SPEC

G 330

Interior deck heights



Length overall:	33,5 m
Beam:	8,5 m
Draft:	1,8 m
Material:	Aluminium / Sealium
Hull type:	Round bilge, fast displacement
Tonnage:	270 GT

Main engines:	2x MAN V8-1200, 882 kW
Generators:	2x 55 kW, Kohler
Stabilisers:	2x Side Power fins, zero-speed fuction
Max speed:	16 knots
Range:	3,100 nm @ 10 knots 4,000 nm @ 8 knots

Fuel:	20,600 l
Fresh Water:	6,000 l
Grey and Black:	4,500 l

Guests:	10 in 5 cabins
Crew:	5 in 3 cabins

Class:	RINA private
Notations:	RINA Comfort Class, RINA Green Star

Naval architecture:	Van Oossanen NA
Exterior design:	Dobroserdov Design
Interior design:	Giuseppina Arena / Bentley Home



G 330



DECK PLANS

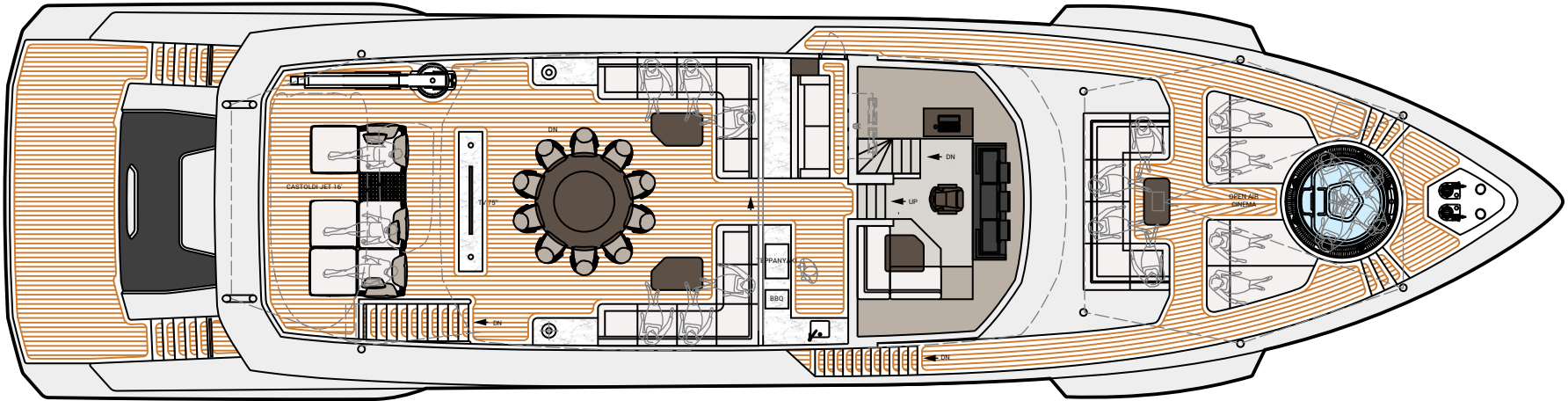
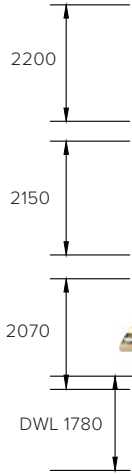
G 330



BENTLEY

HOME

Clear interior heights
Between finished floor and ceiling



This drawing is the property of Dynamiq Yachts SARL and is not to be modified, used or reproduced in whole or part without written permission.



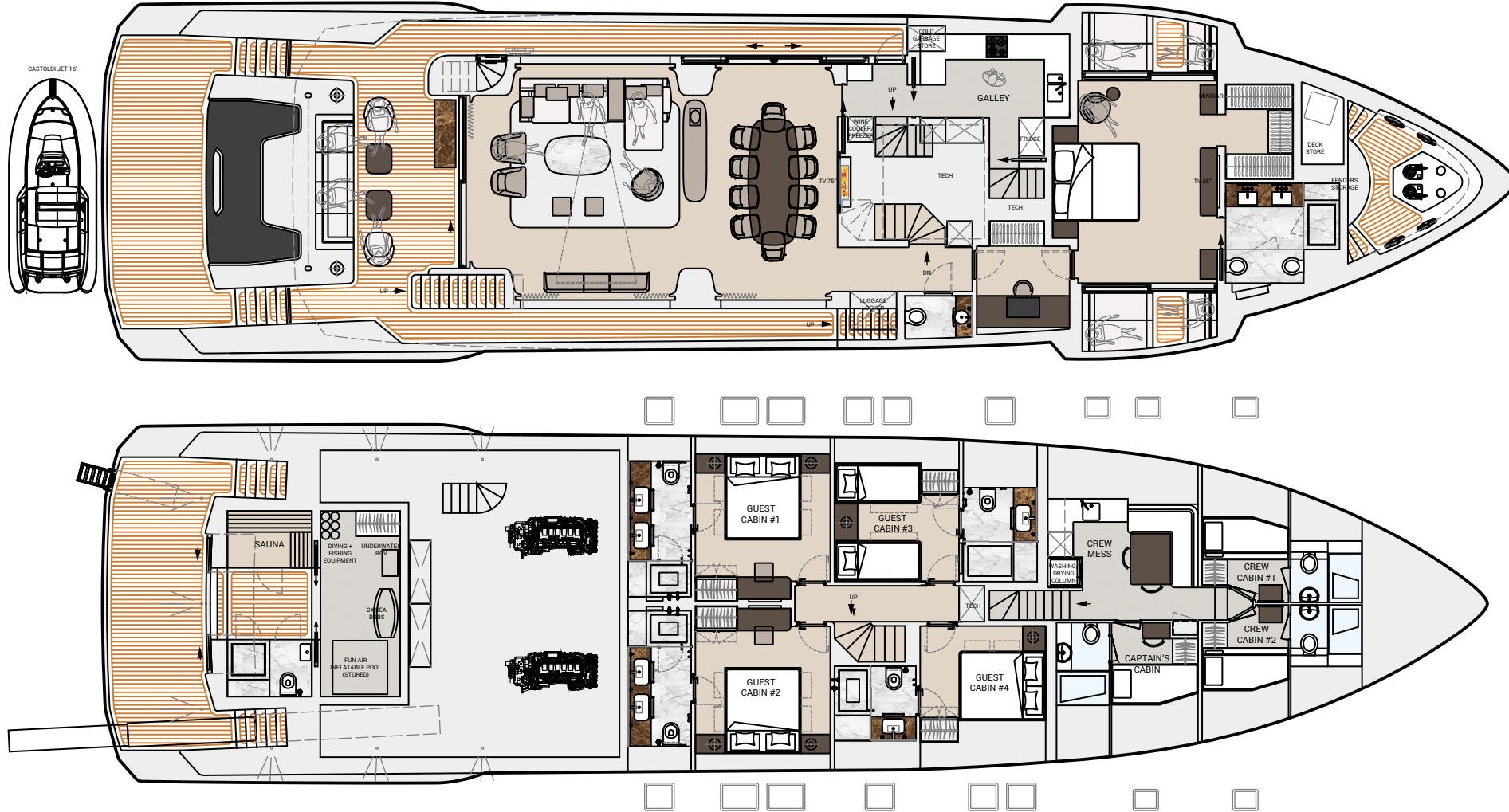
DECK PLANS

G 330



BENTLEY

HOME



This drawing is the property of Dynamiq Yachts SARL and is not to be modified, used or reproduced in whole or part without written permission.



G 330



G 330



BENTLEY

HOME



G 330



BENTLEY

HOME



G 330



BENTLEY

HOME



G 330



BENTLEY

HOME



G 330



BENTLEY

HOME



PRICE, OPTIONS & PAYMENT TERMS

G 330

BASE PRICE*:

€ 12,700,000

OPTIONS:

<input type="checkbox"/> Silent package (extra insulation, double glass portholes)	€ 125,000
<input type="checkbox"/> Hull Vane	€ 117,000
<input type="checkbox"/> Bentley package (metallic paint, furniture, lights and carpets set)	€ 435,000
<input type="checkbox"/> Bowers & Wilkins high-end package	€ 39,000
<input type="checkbox"/> Heated bathroom floors	€ 17,500
<input type="checkbox"/> Fine marbles in luxury areas	€ 49,000
<input type="checkbox"/> Bed linen, bath and deck towels by Frette	€ 45,000
<input type="checkbox"/> Interior scent diffusion	€ 4,500
<input type="checkbox"/> Sundeck cinema	€ 19,000
<input type="checkbox"/> Crew call buttons	€ 8,000
<input type="checkbox"/> Miele electric BBQ on sundeck	€ 3,500
<input type="checkbox"/> Ice dispenser and fridge on sun deck bar	€ 8,000
<input type="checkbox"/> 2 x Miele wine coolers on sundeck	€ 9,000
<input type="checkbox"/> Forward sofa on main deck	€ 9,100
<input type="checkbox"/> Panasonic bow camera	€ 4,500
<input type="checkbox"/> 7 Underwater lights	€ 17,500
<input type="checkbox"/> VSAT Intellian V60	€ 35,000
<input type="checkbox"/> "All weather" package for main and sun deck (IR heating)	€ 14,500

PAYMENT TERMS:

1st year

Contract signature	20%
Keel laying	20%
Main engines at the yard	25%

2nd year

Interior installation start	20%
Launch	10%
Delivery	5%

BUILD TIME:

24 months

* More options are available at bedynamiq.com



G 330





THE SHIPYARD

G 330

Dynamiq is a private shipyard founded in 2011 and owned by yacht broker and designer Sergei Dobroserdov. His main strategy with Dynamiq was to create a well-organised and owner/broker-friendly facility where clients and their reps can enjoy a creative and transparent construction process.

Dynamiq is the only shipyard in Italy building yachts to North European standards that are 100% created by leading naval architects and structural or mechanical engineering companies in the Netherlands. Dynamiq production is located in the picturesque area of Massa on Italy's Tuscan coast. This modern and high-tech facility is fitted out for building the full range of Dynamiq superyachts up to 50 metres in length with various powertrain options, including hybrid technology. The Dynamiq Yachts production facility offers the highest standards of working environment and quality control.

Come to Dynamiq if you want:

1. Original contemporary design;
2. Top-quality full-aluminum construction;
3. Complete Dutch engineering with naval architecture by Van Oossanen;
4. Top-class contractors and leading brand partners from interior design to high-end audio-visual;
5. Competitive Italian prices.



G 330



DYNAMIQ RANGE

GRAN TOURISMO TRANSATLANTIC MODELS

GLOBAL MODELS



Model	GTT 100	GTT 115	GTT 135	GTT 165	G 300	G 330
LOA	30 m / 100'	35.5 m / 115'	41 m / 135'	50 m / 165'	30.5 m / 100'	33,5 m / 110'
Beam	7,5 m / 24'7"	7.1 m / 23'3"	8.2 m / 26'11"	8.5 m / 27'10"	7.5 m / 24'7"	8.5 m / 27'10"
Draft	1.45 m / 4'9"	1.45 m / 4'9"	1.6 m / 5'3"	2 m / 6'6"	1.45 m / 4'9"	1.8 m / 5'3"
Max speed	25 knots	21 knots	21 knots	20 knots	19 knots	16 knots
Range	3,000 nm @ 10 knots	3,400 nm @ 10 knots	3,000 nm @ 12 knots	4,000 nm @ 12 knots	3,000 nm @ 10 knots	3,100 nm @ 10 knots
Engines	2x MAN V12-1650 1,213 kW	2x MAN, 1,213 kW	2x MAN, 1,140 kW	2x MTU 8V 932, kW	2x MAN, 882 kW	2x MAN, 882 kW
Hull / superstructure	Aluminium, 5083	Aluminium, 5083	Aluminium, 5083	Aluminium, 5083	Aluminium, 5083	Aluminium, 5083
Tonnage		198 GT	299 GT	450 GT	<200 GT	270 GT
Guests / Crew	8 / 5	6 or 8 / 6	10 / 6	10 or 12 / 9	8 / 4	10 / 5
Build time	22 months	20 months	24 months	32 months	22 months	22 months
Price	starting at 8 900 000 €	starting at 12 500 000 €	starting at 16 500 000 €	starting at 27 500 000 €	starting at 9 150 000 €	starting at 12 700 000 €





LIVE SMART. BE DYNAMIQ.



16 QUAI JEAN CHARLES REY, 98000 MONACO

BEDYNAMIQ.COM