

D Y N A M I Q

GTT 100

GTT 100

THE FAST AND CAPABLE ENTRY-LEVEL GTT YACHT.

This handsome, refined and affordable model in the Dynamiq range combines compact size with all the high-tech features of larger models. Powered by the two MAN V12 engines for a range of 3,000 nautical miles, the GTT 100 is perfect for voyages to Capri, Sardinia, Ibiza, St Tropez, and beyond.

The versatile vessel of 30 m (100 ft) with a generous 7.1 m (23.3 ft) beam can accommodate up to eight guests in outstanding comfort in four luxury cabins. Her highlights include spacious salon and dining room, and a sundeck of 15.6 m (51.2 ft) in length with four separate relaxation zones.

Tailored to the needs of smart performance enthusiasts and handcrafted for connoisseurs of luxury, the chic GTT 100 offers more than most of her rivals.



GTT 100



Rhodium Silver Metallic / Chrystal Silver Metallic



GTT 100



Cararra White / Chrystal Silver Metallic



KEY FEATURES

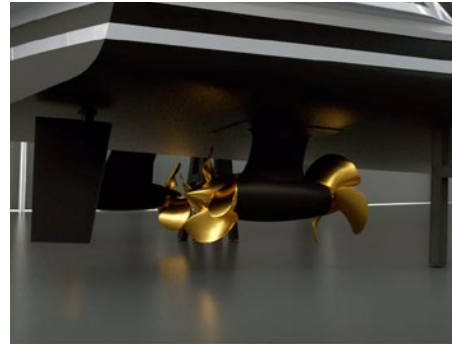
GTT 100



1 Hull

Drawn by the famous Dutch naval architects Van Oossanen, the GTT 100 unique hull features a round-bilge shape for remarkably low resistance and low fuel consumption, while still being capable of high speeds. The design decreases vertical accelerations in the hull, which translates into a far more comfortable motion when sailing. The avant-garde bow shape with a vertical stem maximises the waterline length, enhancing performance even more. To keep spray levels low, an integrated spray rail deflects water hitting the bow area.

Built entirely from marine grade aluminium, the GTT 100 hull guarantees unparalleled comfort and safe operation for more than 25 years.



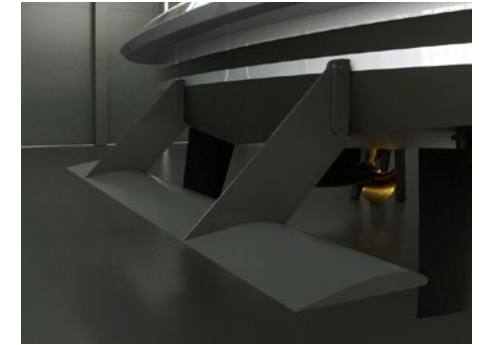
2 Propulsion

Fortjes pods are much more efficient than any system using conventional shafts and propellers. Their positioning outside the hull also means greatly reduced noise and vibration levels, as well as lower emissions. The pods use counter-rotating propellers linked via a compact gearbox to the main engines, reducing engine room space requirements by nearly 18%, which means more accommodation for you and your guests. Built in Germany, Fortjes pods are the perfect compliment to the efficient GTT 100 hull form.



3 Stabilisation system (option)

Swedish leading specialists Humphree created a custom stabilisation system using 2 cutting-edge electric stabilisers and 2 interceptors. The very efficient system underway reduces roll by up to 85%, while enhancing stability and course keeping. At anchor, 2 fins with a large total area cut roll by up to 60%. Electric stabilisers are far quieter, more reactive, take up less space and are more power efficient than their hydraulic counterparts. With no hydraulic systems running through the yacht, there is also no risk of interior damage following a hydraulic system failure.



4 Hull Vane® (option)

The Hull Vane® is a patented fixed foil located below the stern of a ship. Developed by renowned Dutch naval architects Van Oossanen it influences the stern wave pattern and creates hydrodynamic lift, which is partially oriented forward. This innovation leads to significant reduction of the hull's resistance, which in turn enables the installation of much smaller engines, fuel savings and longer range. The Hull Vane® also improves stability under way and at anchor, while reducing both pitching and yawing motions.



GTT 100



GTT 100



GTT 100



GTT 100



GTT 100



GTT 100



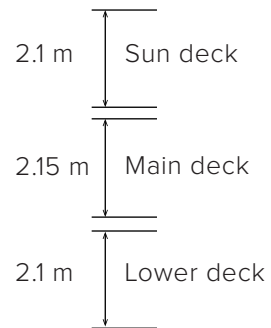
GTT 100



MAIN SPEC

GTT 100

Interior deck heights



Length overall:	30 m / 100'
Beam:	7.1 m / 23'4"
Draft:	1.45 m / 4'9"
Material:	Full aluminium, 5083
Hull type:	Round bilge, fast displacement

Main engines:	2x MAN V12-1650 1,213 kW
Propulsion:	2x Fortjes 4000 pods
Generators:	2x 30 kW
Stabilisers:	Electrically driven, zero-speed fuction
Max speed:	25 knots
Range:	3,000 nm @ 10 knots

Fuel:	15,500 l
Fresh Water:	4,150 l
Grey and Black:	2,800 l

Guests:	8 in 4 cabins
Crew:	5 in 3 cabins

Class:	RINA commercial, LY3 compliant
Notations:	RINA Comfort Class, RINA Green Star

Naval architecture:	Van Oossanen Naval Architects
Exterior design:	Dobroserdov Design
Interior design:	Giuseppina Arena / Dynamiq



STRINGENT STANDARDS

GTT 100

In order to create a perfect yacht, from the outset Dynamiq decided to comply with the strictest requirements for comfort and safety. Every Dynamiq yacht is built in accordance with the latest Large Yacht Code (LY3) commercial regulations. This not only makes them ultra safe, but also means they can be chartered to provide an income for their owners.

Dynamiq and its partners are deeply aware of the need for sustainability. We strongly believe that eco-friendly yachts are a requirement for today's owners and their guests. That is why our yachts feature fuel-efficient hulls and reduced air-conditioning loads thanks to special XIR laminated glass.

We are genuinely committed to protecting the world's oceans, coastlines and the global ecology by reducing fuel consumption and emissions through innovative waste management solutions. All Dynamiq yachts are designed and built to meet the strict environmental standards of RINA's Green Star Plus notation.

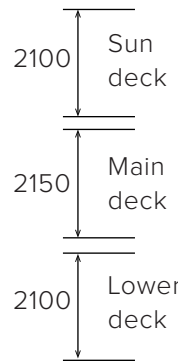
Moreover, intensive research into reducing sound and vibration and the use of modern insulation materials create a near silent yacht with exceptional acoustic privacy between cabins. These elevated levels of comfort for passengers and crew have been rewarded with RINA's prestigious Comfort Class notation.



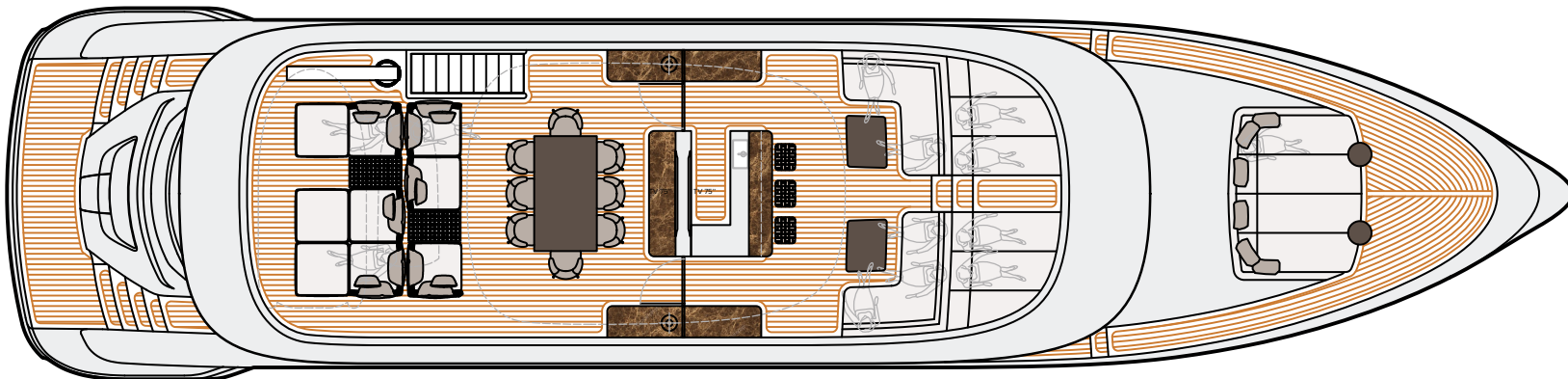
DECK PLANS

GTT 100

Interior deck heights



Profile



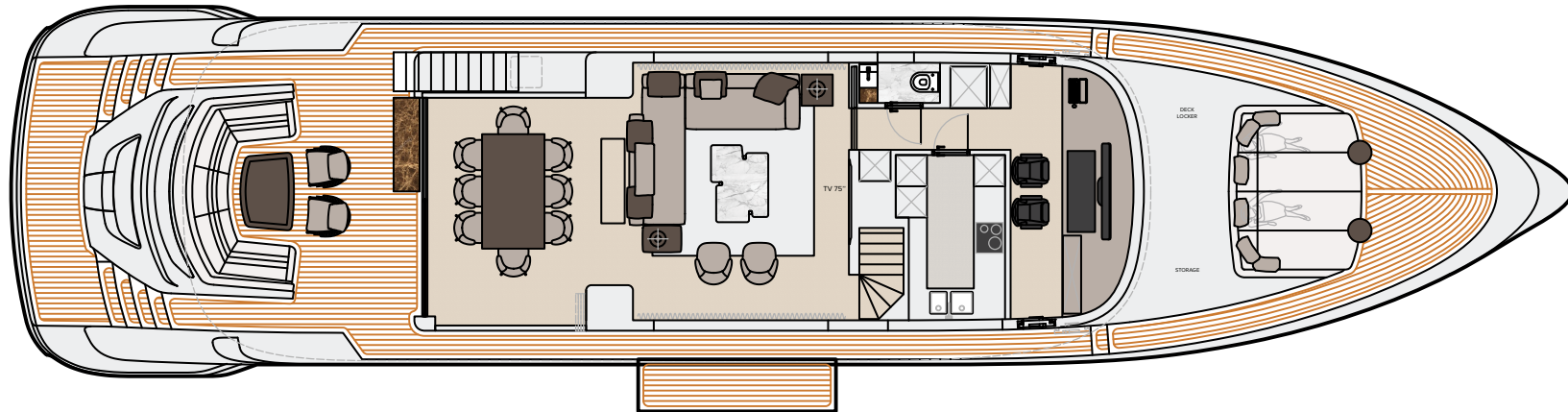
Sun deck

This drawing is the property of Dynamiq Yachts SARL and is not to be modified, used or reproduced in whole or part without written permission.

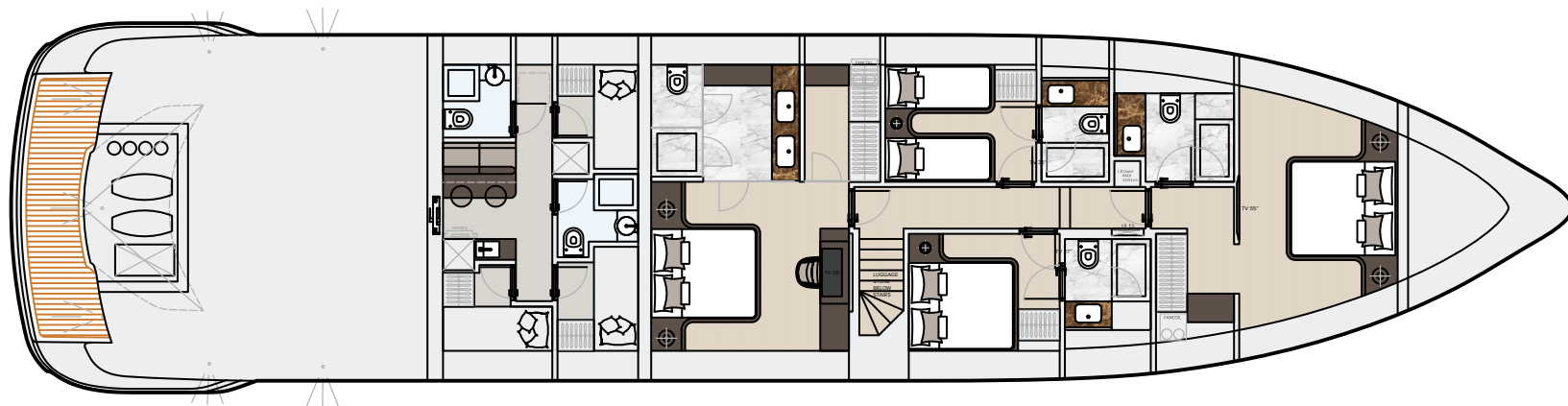


DECK PLANS

GTT 100



Main deck



Lower deck

This drawing is the property of Dynamiq Yachts SARL and is not to be modified, used or reproduced in whole or part without written permission.



PRICE, OPTIONS & PAYMENT TERMS

GTT 100

BASE PRICE:

€ 8,900,000

OPTIONS*:

<input type="checkbox"/>	Sport package (metallic paint / carbon trim)	€ 175,000
<input type="checkbox"/>	Silent package	€ 115,000
<input type="checkbox"/>	Hull Vane	€ 127,000
<input type="checkbox"/>	Minotti package	€ 270,000
<input type="checkbox"/>	Bowers & Wilkins package	€ 39,000
<input type="checkbox"/>	Heated bathroom floors	€ 17,500
<input type="checkbox"/>	Fine marbles in luxury areas	€ 49,000
<input type="checkbox"/>	Bed linen, bath and deck towels by Pratesi	€ 45,000
<input type="checkbox"/>	Interior scent diffusion	€ 4,500
<input type="checkbox"/>	Sundeck cinema	€ 19,000
<input type="checkbox"/>	Crew call buttons	€ 8,000
<input type="checkbox"/>	Miele electric BBQ on sundeck	€ 3,500
<input type="checkbox"/>	Ice dispenser and fridge in sun deck bar	€ 8,000
<input type="checkbox"/>	2 x Miele wine coolers on sundeck	€ 9,000
<input type="checkbox"/>	Forward seats on main deck	€ 9,100
<input type="checkbox"/>	Panasonic bow camera	€ 4,500
<input type="checkbox"/>	Sundeck bar	€ 55,000
<input type="checkbox"/>	Main deck aft pool	€ 39,900
<input type="checkbox"/>	7 Underwater lights	€ 17,500
<input type="checkbox"/>	VSAT Intellian V60	€ 35,000
<input type="checkbox"/>	"All weather" package for main deck and sun deck (IR heating)	€ 9,500

PAYMENT TERMS:

Contract signature	10%
Keel laying	25%
Main engines installed	25%
Interior installation start	25%
Launch	10%
Delivery	5%

BUILD TIME:

21 months

* More options are available at bedynamiq.com



THE SHIPYARD

Our modern and high-tech shipyard in Viareggio, Italy, is fitted out for building the full range of Dynamiq superyachts up to 50 m in length with various powertrain options, including cutting-edge hybrid technology.

The Dynamiq production facility offers the highest standards of working environment and quality control. It is located just 100m from the waterfront making launching, sea trials and delivery easy, safe and cost effective.

GTT 100



WELCOME TO THE NEXT-GENERATION WORLD

Dynamiq is a Monaco-based builder of superyachts with unique functionality. Using leading-edge technology and elaborate hydrodynamic research, Dynamiq has created a family of all-aluminium yachts that combine the 20-knot-plus maximum speeds of sport cruisers with the comfort and 3,000-mile range of displacement vessels. We call this new yacht category Gran Turismo Transatlantic, or GTT for short.

The brand was started in 2011 by experienced yacht broker and designer Sergei Dobroserdov, who assembled a “dream team” of world thinkers, designers and naval architects to design and fine-tune a new concept in yachting.

Dynamiq is also the first company in the superyacht industry to introduce an Online Configurator, allowing our yachts to be easily and transparently customised down to the last detail.

Our yachts are built in a modern facility in Viareggio on Italy’s Tuscan coast under strict supervision and meticulous quality control.

GTT 100



DYNAMIQ RANGE 2017-2018



Model	<i>GTT 100</i>	<i>GTT 115</i>	<i>GTT 135</i>	<i>GTT 165</i>
LOA	30 m / 100'	35.5 m / 115'	41 m / 135'	50 m / 165'
Beam	7.1 m / 23'4"	7.5 m / 24'5"	8.2 m / 26'11"	8.5 m / 27'10"
Speed max.	25 knots	22 knots	21 knots	20 knots
Engines	2x MAN V12-1650 1,213 kW	2x MAN V12-1650 1,213 kW	2x MAN V12-1550 1,140 kW	2x MTU 8V2000M94 932 kW
Guest / cabins	8 in 4 cabins	6 in 3 cabins / 8 in 4 cabins	10 in 5 cabins	12 in 6 cabins
Crew / cabins	5 in 3 cabins	6 in 3 cabins	6 in 3 cabins	9 in 5 cabins
Build time	21 months	22 months	24 months	32 months
Base price	€ 8,900,000	€ 12,500,000	€ 16,500,000	€ 27,500,000





LIVE SMART. BE DYNAMIQ.

18 QUAI JEAN CHARLES REY, 98000 MONACO

BEDYNAMIQ.COM