



D Y N A M I Q

GRAN TURISMO TRANSATLANTIC SERIES

GTT 160

GTT 160

A NEW CLASS OF COOL

This avant-garde 49-metre superyacht is based on a Fast Displacement Hull Form engineered in the Netherlands by Van Oossanen. Deliverable in just two years, with elegant yet sporty exterior styling, she packs a punch in terms of performance, aesthetics and onboard features.

The combination of aluminium and Sealium alloys for the construction ensures a light, robust and easy to maintain vessel. When paired with a Hull Vane for maximum stability and efficiency, she boasts a top speed of 17 and transatlantic range. Onboard features include six luxurious guest cabins, two fixed balconies in the master stateroom, whisper-quiet propulsion, a touch-and-go helipad and optional Bentley Home interior design.

She is the perfect yacht for cruising the Seven Seas in style.



GTT 160

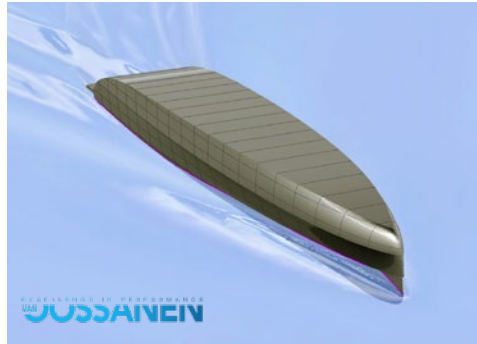


GTT 160



KEY FEATURES

GTT 160



Full aluminium round bilge fast displacement hull

Drawn by the famous Dutch naval architects Van Oossanen, the GTT 160 unique hull features a round-bilge shape for remarkably low resistance and low fuel consumption, while still being capable of high speeds. The design decreases vertical accelerations in the hull, which translates into a far more comfortable motion when sailing. The avant-garde bow shape with a vertical stem maximises the waterline length, enhancing performance even more. To keep spray levels low, an integrated spray rail deflects water hitting the bow area. Built entirely from marine grade aluminium, the GTT 160 hull guarantees unparalleled comfort and safe operation for more than 25 years.



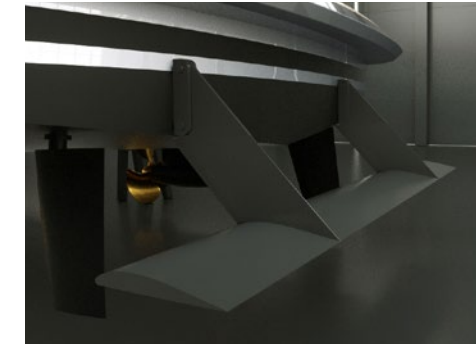
Robust full aluminium construction

Certified marine-grade 5083 aluminium and stronger 5383 Sealium, a lightweight alloy that weighs three times less than steel, is used for Dynamiq GTT 160 hull and superstructure. A lighter hull provides a better performance, shallower draft, lower fuel consumption. Another benefit is that aluminium guarantees a stiff, robust and vibration-free vessel that is very comfortable and behaves well in a heavy swell or choppy seas. The strength-to-weight ratio of aluminium is equivalent to that of steel and there is much less risk of serious damage in case of a collision than with a fibreglass hull. Unlike composite materials, aluminium is fully recyclable, odourless, does not rust or creak at sea and does not burn in the atmosphere.



Curved fin stabilizers by Side Power

Vector Fins stabilisers dramatically reduce roll as well as undesired yaw and sway motions caused by active fins. Their vertical concave shape creates a net force direction, both in cruising and at-anchor modes, so the work is more up-down instead of side-to-side. By changing the net force angle, this also increases the leverage arm around the boat's rolling point, further increasing the physical forces that work on the boat to reduce roll. This provides more efficient stabilisation per fin size, which means that drag and power consumption are a lot less than with other fins offering comparable roll reduction.



Hull Vane®

The Hull Vane® is a patented fixed foil located below the stern of a ship. Developed by renowned Dutch naval architects Van Oossanen it influences the stern wave pattern and creates hydrodynamic lift, which is partially oriented forward. This innovation leads to significant reduction of the hull's resistance, which in turn enables the installation of much smaller engines, fuel savings and longer range. The Hull Vane® also improves stability under way and at anchor, while reducing both pitching and yawing motions.



XIR glass

The GTT 160 features next-generation laminated XIR glass that allows maximum light transmission, while keeping solar heat gain at bay. Harmful UV rays are almost completely blocked, and heat transmission reduced by 60%. The result is an interior that offers the wide panoramas of large windows without the penalty of heat build-up. This means significantly reduced air-conditioning loads and therefore lower running costs. The glass manufacturer is Isoclima, an Italian high-tech company that also supplies glass for luxury automobiles such as Bentley, McLaren, Mercedes and BMW.



KEY FEATURES

GTT 160



Touch & Go helipad



Japanese Teppanyaki on Sundeck



Upper saloon fireplace



Cinema room & High-end audio by Bowers & Wilkins



GTT 160



GTT 160



D Y N A M I O



GTT 160



MAIN SPEC

GTT 160

2.1 m / 6' 11" Sun deck
 2.1 m / 6' 11" Upper deck
 2.2 m / 7' 3" Main deck
 2.1 m / 6' 11" Lower deck



Length overall: 49.5 m / 162'
 Beam: 8.7 m / 28' 6"
 Draft: 2 m / 6' 6"
 Material: Full aluminium, 5083
 Hull type: Round bilge, fast displacement
 Tonnage: 399 GT

Max speed: 17 knots
 Main engines: 2x MAN i6-730, 537 kW
 Max speed **GTT 160S** (option): 23 knots
 Main engines: 2x MAN V12-1800, 1324 kW
 Propulsion: 2x 1,400 mm 5 blades props
 Range: 2,700 nm (Transat) @ 14 knots
 4,000 nm @ 10 knots

Generators: 2x 100 kW, Kohler
 Stabilisers: 2x Side Power, zero speed

Fuel: 38,300 l / 10,117 US gallons
 Fresh water: 14,800 l / 3,910 US gallons

Guests: 10 in 5 cabins / 12 in 6 cabins
 Crew: 8 in 4 cabins

Helipad Touch & Go, maximum take-off weight 3,000 kg
 (Eurocopter EC130 T2, AW 119, Bell 407 GXP)

Tender: Williams 625, Castoldi 21'

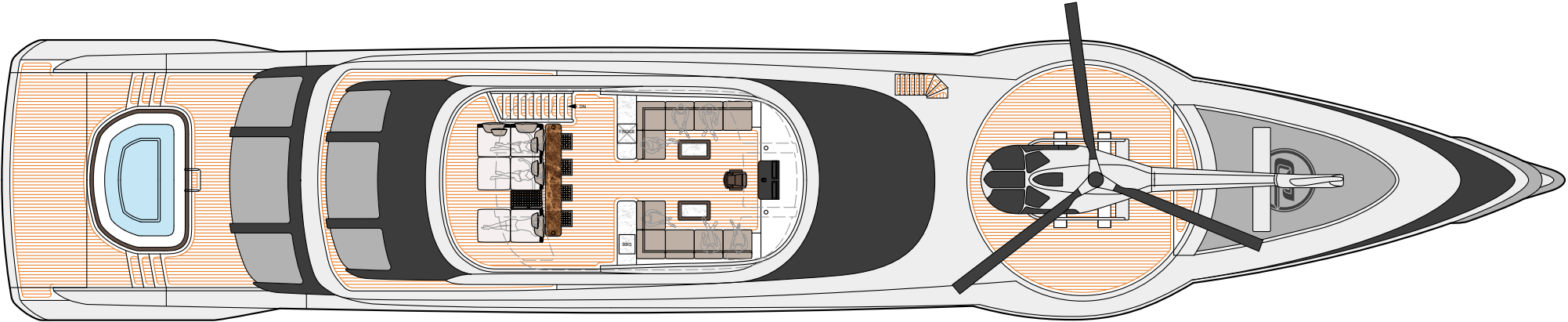
Class: RINA commercial, LY4 compliant
 Notations: RINA Comfort Class, RINA Green Star

Naval architecture: Van Oossanen
 Exterior design: Dobroserdov Design
 Interior design: Claudio Pironi & Partners

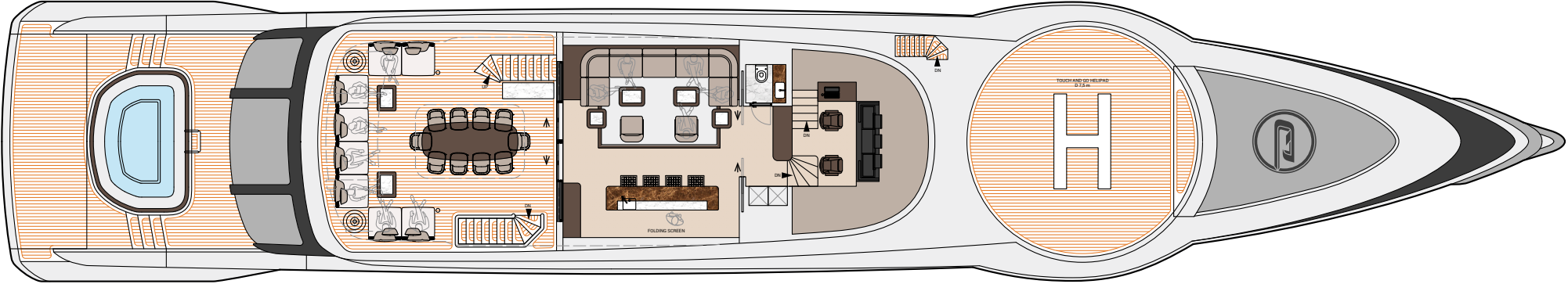


DECK PLANS

GTT 160



Sun deck



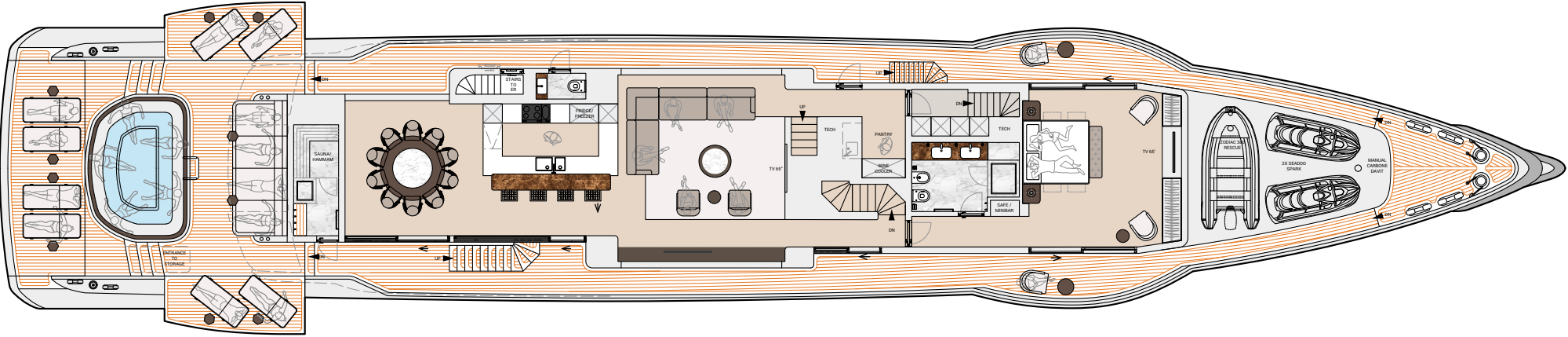
Upper deck

This drawing is the property of Dynamiq Yachts SARL and is not to be modified, used or reproduced in whole or part without written permission.



DECK PLANS

GTT 160



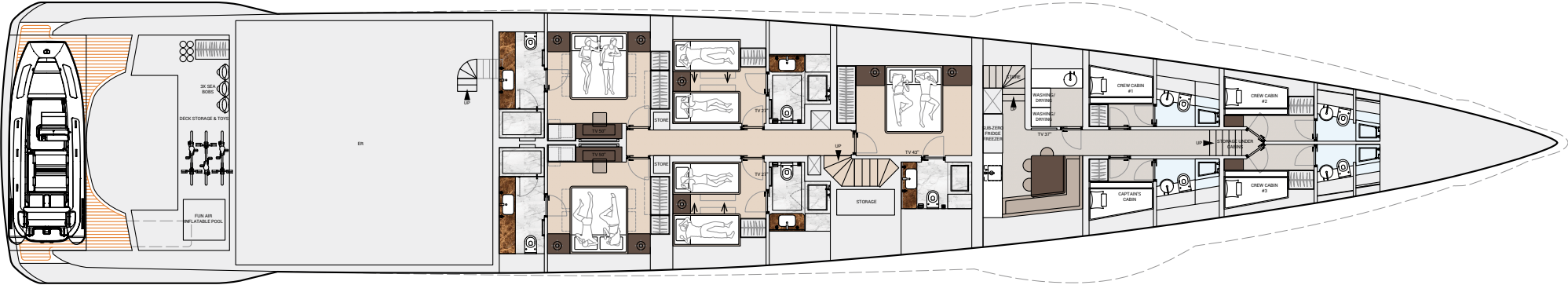
Main deck

This drawing is the property of Dynamiq Yachts SARL and is not to be modified, used or reproduced in whole or part without written permission.

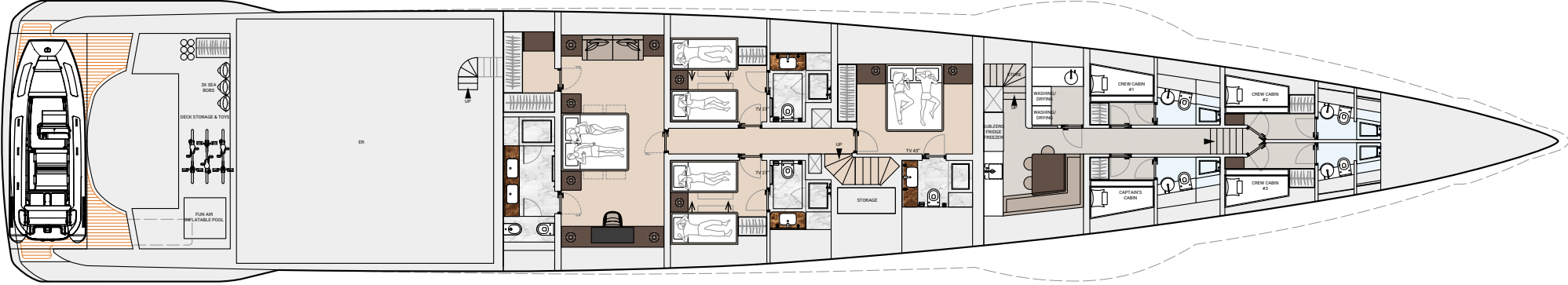


DECK PLANS

GTT 160



Lower deck (6 cabins)



Lower deck (5 cabins)



This drawing is the property of Dynamiq Yachts SARL and is not to be modified, used or reproduced in whole or part without written permission.

GTT 160



DYNAMIQ



GTT 160



Royal Gold Metallic



GTT 160



Carrara White



GTT 160



GTT 160



-GTT 160



GTT 160



GTT 160



GTT 160



GTT 160



GTT 160



GTT 160



PRICE, OPTIONS & PAYMENT TERMS

GTT 160

BASE PRICE:

€ 21,900,000

OPTIONS*:

<input type="checkbox"/> S version (23 knots)	€ 850,000
<input type="checkbox"/> Hybrid package (Electric mode cruising @ 8 knots)	€ 725,000
<input type="checkbox"/> «Silent» package (extra insulation, double glass)	€ 210,000
<input type="checkbox"/> Sun deck aft pool with sunpads	€ 85,000
<input type="checkbox"/> Metallic paint for hull and superstructure	€ 125,000
<input type="checkbox"/> Fine marbles in luxury areas	€ 79,000
<input type="checkbox"/> Tender Castoldi 21' (full options)	€ 150,000
<input type="checkbox"/> Bowers & Wilkins hi-end audio package	€ 49,000
<input type="checkbox"/> VSAT Intellian V100G antennae	€ 47,000

PAYMENT TERMS:

Contract signature	20%
Keel laying	20%
Main engines installed	25%
Interior installation start	20%
Launch	10%
Delivery	5%

BUILD TIME:

24 months

* More options are available at bedynamiq.com



GTT 160



GTT 160



STRINGENT STANDARDS

GTT 160

In order to create a perfect yacht, from the outset Dynamiq decided to comply with the strictest requirements for comfort and safety. Every Dynamiq yacht is built in accordance with the latest Large Yacht Code (LY4) commercial regulations. This not only makes them ultra safe, but also means they can be chartered to provide an income for their owners.

Dynamiq and its partners are deeply aware of the need for sustainability. We strongly believe that eco-friendly yachts are a requirement for today's owners and their guests. That is why our yachts feature fuel-efficient hulls and reduced air-conditioning loads thanks to special XIR laminated glass.

We are genuinely committed to protecting the world's oceans, coastlines and the global ecology by reducing fuel consumption and emissions through innovative waste management solutions. All Dynamiq yachts are designed and built to meet the strict environmental standards of RINA's Green Star Plus notation.

Moreover, intensive research into reducing sound and vibration and the use of modern insulation materials create a near silent yacht with exceptional acoustic privacy between cabins. These elevated levels of comfort for passengers and crew have been rewarded with RINA's prestigious Comfort Class notation.



THE SHIPYARD

Dynamiq is a private shipyard founded in 2014 and owned by yacht broker and designer Sergei Dobroserdov. His main strategy with Dynamiq was to create a well-organised and owner/broker-friendly facility where clients and their reps can enjoy a creative and transparent construction process.

Dynamiq is the only shipyard in Italy building yachts to North European standards that are 100% created by leading naval architects and structural or mechanical engineering companies in the Netherlands. Dynamiq production is located in the picturesque area of Massa on Italy's Tuscan coast. This modern and high-tech facility is fitted out for building the full range of Dynamiq superyachts up to 50 metres in length with various powertrain options, including hybrid technology. The Dynamiq Yachts production facility offers the highest standards of working environment and quality control.

Come to Dynamiq if you want:

1. Original contemporary design;
2. Top-quality full-aluminum construction;
3. Complete Dutch engineering with naval architecture by Van Oossanen;
4. Top-class contractors and leading brand partners from interior design to high-end audio-visual;
5. Competitive Italian prices.






LIVE SMART. BE DYNAMIQ.



Via Massa Avenza 85, 54100 Massa, Italy

www.bedynamiq.com

 @bedynamiq