



D Y N A M I Q

GRAN TOURISMO TRANSATLANTIC SERIES

GTT 100

GTT 100

THE FAST AND CAPABLE ENTRY-LEVEL GTT YACHT.

This handsome, refined and affordable model in the Dynamiq range combines compact size with all the high-tech features of larger models. Powered by the two MAN V8 engines for a range of 3,000 nautical miles, the GTT 100 is perfect for voyages to Capri, Sardinia, Ibiza, St Tropez, and beyond.

The versatile vessel of 30 m (100 ft) with a generous 7.5 m (24.7 ft) beam can accommodate up to eight guests in outstanding comfort in four luxury cabins. Her highlights include spacious salon and dining room, and a sundeck of 15.6 m (51.2 ft) in length with four separate relaxation zones.

Tailored to the needs of smart performance enthusiasts and handcrafted for connoisseurs of luxury, the chic GTT 100 offers more than most of her rivals.



GTT 100



GTT 100

Rhodium Silver Metallic / Chrystal Silver Metallic



GTT 100



Cararra White / Chrystal Silver Metallic



KEY FEATURES

GTT 100



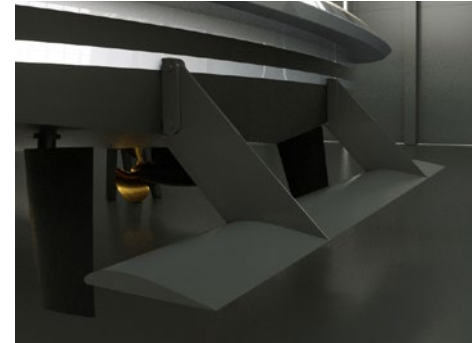
Full aluminium round bilge fast displacement hull

Drawn by the famous Dutch naval architects Van Oossanen, the GTT 100 unique hull features a round-bilge shape for remarkably low resistance and low fuel consumption, while still being capable of high speeds. The design decreases vertical accelerations in the hull, which translates into a far more comfortable motion when sailing. The avant-garde bow shape with a vertical stem maximises the waterline length, enhancing performance even more. To keep spray levels low, an integrated spray rail deflects water hitting the bow area. Built entirely from marine grade aluminium, the GTT 100 hull guarantees unparalleled comfort and safe operation for more than 25 years.



Curved fin stabilizers by Side Power

Vector Fins stabilisers dramatically reduce roll as well as undesired yaw and sway motions caused by active fins. Their vertical concave shape creates a net force direction, both in cruising and at-anchor modes, so the work is more up-down instead of side-to-side. By changing the net force angle, this also increases the leverage arm around the boat's rolling point, further increasing the physical forces that work on the boat to reduce roll. This provides more efficient stabilisation per fin size, which means that drag and power consumption are a lot less than with other fins offering comparable roll reduction.



Hull Vane®

The Hull Vane® is a patented fixed foil located below the stern of a ship. Developed by renowned Dutch naval architects Van Oossanen it influences the stern wave pattern and creates hydrodynamic lift, which is partially oriented forward. This innovation leads to significant reduction of the hull's resistance, which in turn enables the installation of much smaller engines, fuel savings and longer range. The Hull Vane® also improves stability under way and at anchor, while reducing both pitching and yawing motions.



XIR glass

The GTT 100 features next-generation laminated XIR glass that allows maximum light transmission, while keeping solar heat gain at bay. Harmful UV rays are almost completely blocked, and heat transmission reduced by 60%. The result is an interior that offers the wide panoramas of large windows without the penalty of heat build-up. This means significantly reduced air-conditioning loads and therefore lower running costs. The glass manufacturer is Isoclima, an Italian high-tech company that also supplies glass for luxury automobiles such as Bentley, McLaren, Mercedes and BMW.



GTT 100



GTT 100



GTT 100



GTT 100



GTT 100



GTT 100



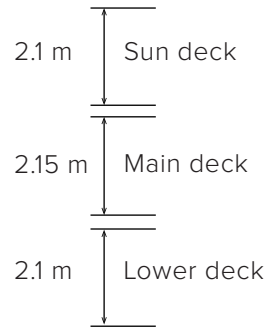
GTT 100



MAIN SPEC

GTT 100

Interior deck heights



Length overall:	30 m / 100'
Beam:	7.5 m / 24'7"
Draft:	1.45 m / 4'9"
Material:	Full aluminium, 5083
Hull type:	Round bilge, fast displacement

Main engines:	2x MAN V8-1200, 882 kW
Generators:	2x 40 kW
Stabilisers:	2x Stabilizer fins, Side Power Hull Vane®

Max speed:	25 knots
Range:	3,000 nm @ 10 knots

Fuel:	15,500 l
Fresh Water:	4,150 l
Grey and Black:	2,800 l

Guests:	9 in 4 cabins
Crew:	5 in 3 cabins

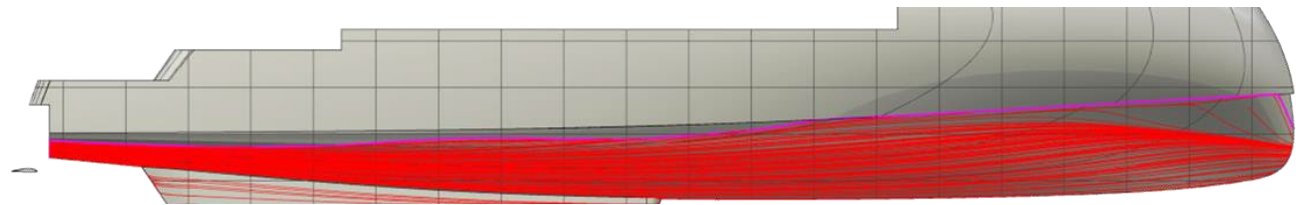
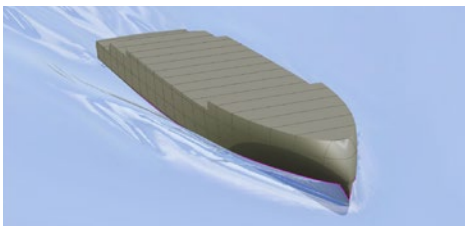
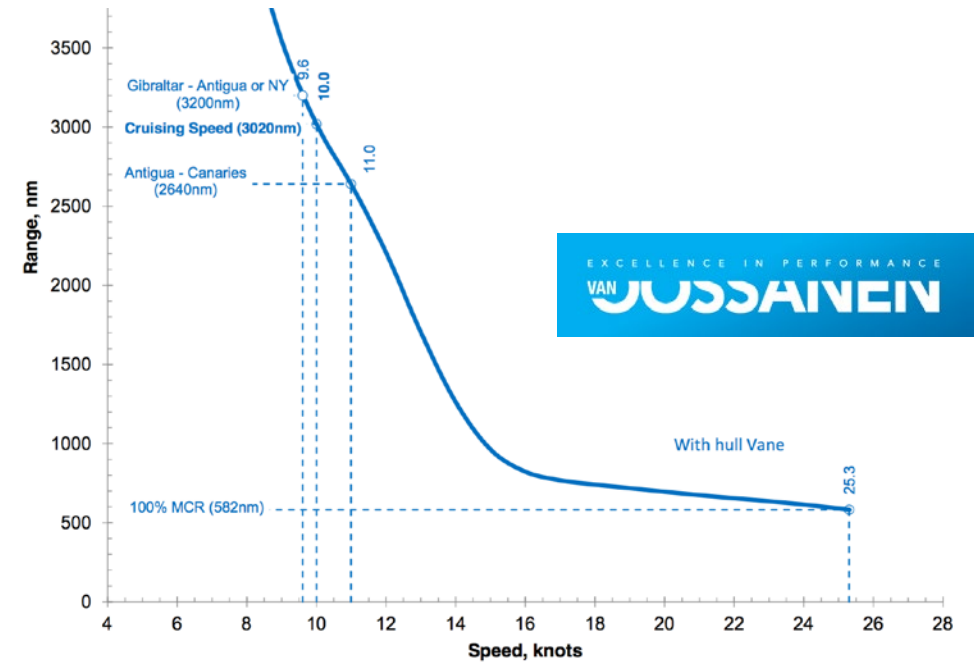
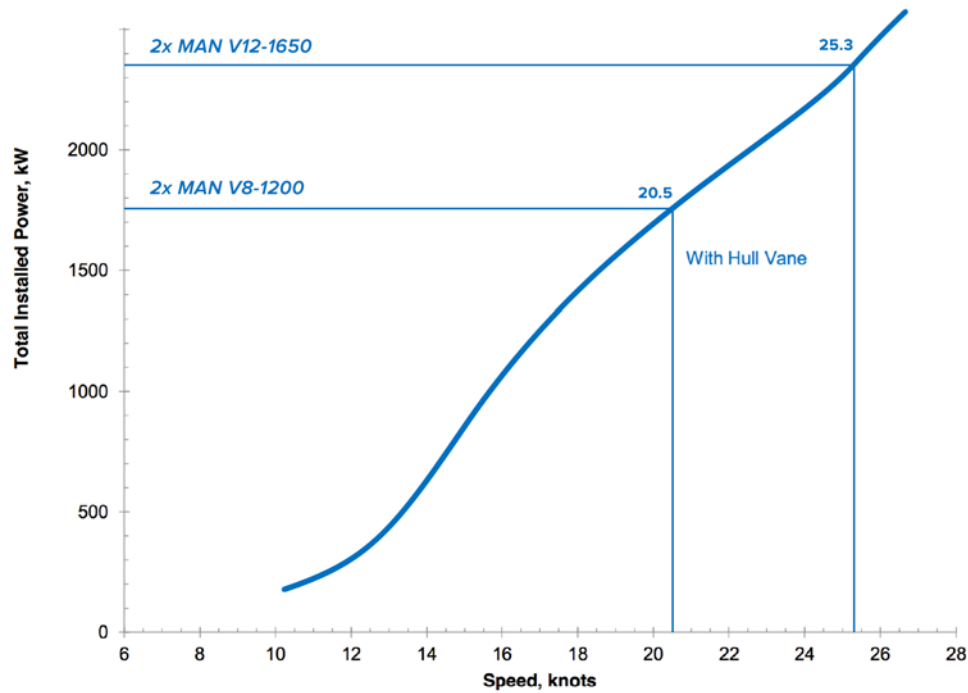
Class:	RINA commercial, LY4 compliant
Notations:	RINA Comfort Class, RINA Green Star

Naval architecture:	Van Oossanen
Exterior design:	Dobroserdov Design
Interior design:	Dynamiq



POWER / RANGE / SPEED

GTT 100



Fast Displacement Hull Form or FDHF was developed by renowned Dutch naval architects Van Oossanen and ensures extra efficiency over the entire speed range. At semi-displacement speeds, the resistance values displayed by the FDHF are up to 20 per cent better than those of well-designed hard chine hull forms. Other benefits include significantly increased comfort onboard with better sea keeping and wave reduction.



STRINGENT STANDARDS

GTT 100

In order to create a perfect yacht, from the outset Dynamiq decided to comply with the strictest requirements for comfort and safety. Every Dynamiq yacht is built in accordance with the latest Large Yacht Code (LY4) commercial regulations. This not only makes them ultra safe, but also means they can be chartered to provide an income for their owners.

Dynamiq and its partners are deeply aware of the need for sustainability. We strongly believe that eco-friendly yachts are a requirement for today's owners and their guests. That is why our yachts feature fuel-efficient hulls and reduced air-conditioning loads thanks to special XIR laminated glass.

We are genuinely committed to protecting the world's oceans, coastlines and the global ecology by reducing fuel consumption and emissions through innovative waste management solutions. All Dynamiq yachts are designed and built to meet the strict environmental standards of RINA's Green Star Plus notation.

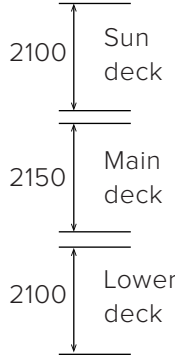
Moreover, intensive research into reducing sound and vibration and the use of modern insulation materials create a near silent yacht with exceptional acoustic privacy between cabins. These elevated levels of comfort for passengers and crew have been rewarded with RINA's prestigious Comfort Class notation.



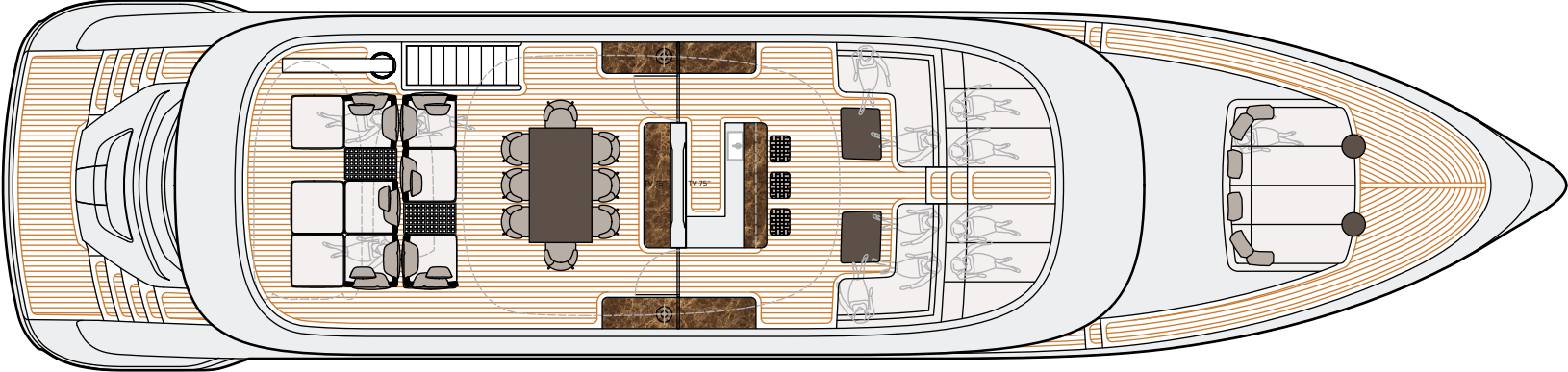
DECK PLANS

GTT 100

Interior deck heights



Profile



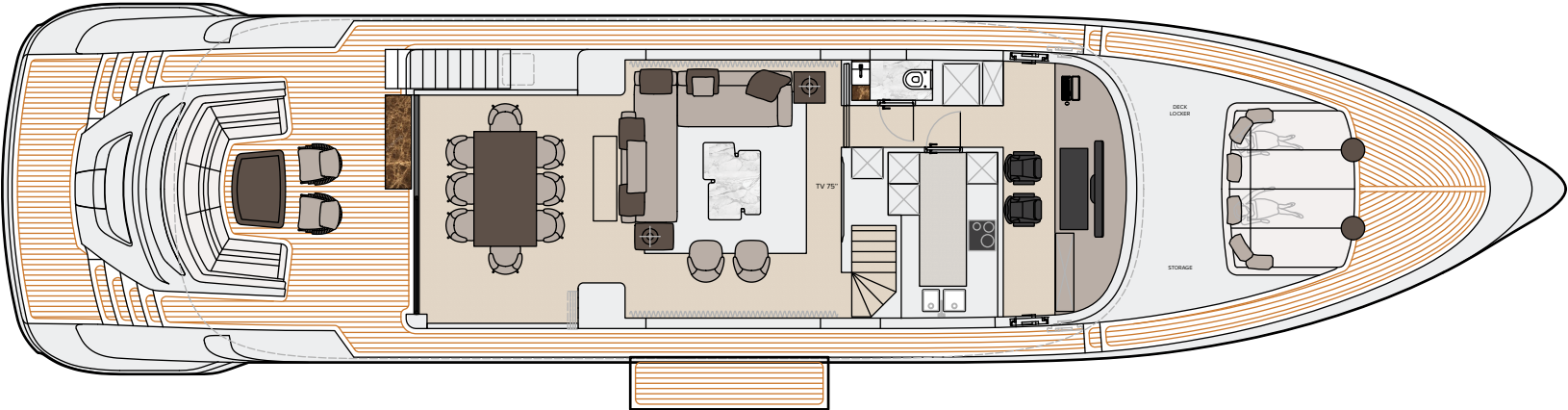
Sun deck

This drawing is the property of Dynamiq Yachts SARL and is not to be modified, used or reproduced in whole or part without written permission.

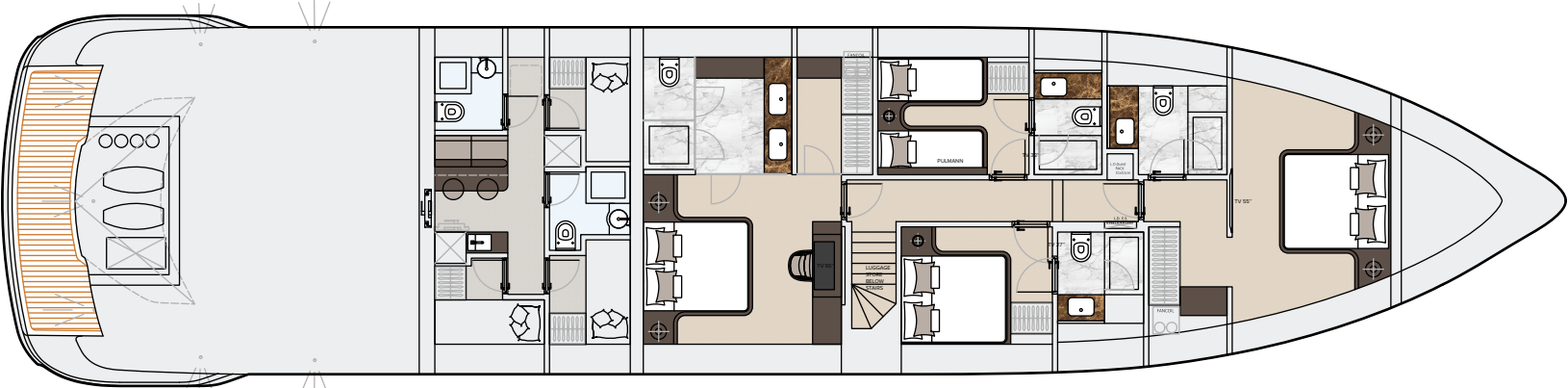


DECK PLANS

GTT 100



Main deck



Lower deck

This drawing is the property of Dynamiq Yachts SARL and is not to be modified, used or reproduced in whole or part without written permission.



PRICE, OPTIONS & PAYMENT TERMS

GTT 100

BASE PRICE:

€ 8,900,000

OPTIONS*:

<input type="checkbox"/>	Sport package (metallic paint / carbon trim)	€ 175,000
<input type="checkbox"/>	Silent package	€ 115,000
<input type="checkbox"/>	Hull Vane	€ 127,000
<input type="checkbox"/>	Minotti package	€ 270,000
<input type="checkbox"/>	Bowers & Wilkins package	€ 39,000
<input type="checkbox"/>	Heated bathroom floors	€ 17,500
<input type="checkbox"/>	Fine marbles in luxury areas	€ 49,000
<input type="checkbox"/>	Bed linen, bath and deck towels by Pratesi	€ 45,000
<input type="checkbox"/>	Interior scent diffusion	€ 4,500
<input type="checkbox"/>	Sundeck cinema	€ 19,000
<input type="checkbox"/>	Crew call buttons	€ 8,000
<input type="checkbox"/>	Miele electric BBQ on sundeck	€ 3,500
<input type="checkbox"/>	Ice dispenser and fridge in sun deck bar	€ 8,000
<input type="checkbox"/>	2 x Miele wine coolers on sundeck	€ 9,000
<input type="checkbox"/>	Forward seats on main deck	€ 9,100
<input type="checkbox"/>	Panasonic bow camera	€ 4,500
<input type="checkbox"/>	Sundeck bar	€ 55,000
<input type="checkbox"/>	Main deck aft pool	€ 39,900
<input type="checkbox"/>	7 Underwater lights	€ 17,500
<input type="checkbox"/>	VSAT Intellian V60	€ 35,000
<input type="checkbox"/>	"All weather" package for main deck and sun deck (IR heating)	€ 9,500

PAYMENT TERMS:

1st year

Contract signature	20%
Keel laying	20%
Main engines at the yard	25%

2nd year

Interior installation start	20%
Launch	10%
Delivery	5%

BUILD TIME:

22 months

* More options are available at bedynamiq.com



THE SHIPYARD

Dynamiq is a private shipyard founded in 2011 and owned by yacht broker and designer Sergei Dobroserdov. His main strategy with Dynamiq was to create a well-organised and owner/broker-friendly facility where clients and their reps can enjoy a creative and transparent construction process.

Dynamiq is the only shipyard in Italy building yachts to North European standards that are 100% created by leading naval architects and structural or mechanical engineering companies in the Netherlands. Dynamiq production is located in the picturesque area of Massa on Italy's Tuscan coast. This modern and high-tech facility is fitted out for building the full range of Dynamiq superyachts up to 50 metres in length with various powertrain options, including hybrid technology. The Dynamiq Yachts production facility offers the highest standards of working environment and quality control.

Come to Dynamiq if you want:

1. Original contemporary design;
2. Top-quality full-aluminum construction;
3. Complete Dutch engineering with naval architecture by Van Oossanen;
4. Top-class contractors and leading brand partners from interior design to high-end audio-visual;
5. Competitive Italian prices.



DYNAMIQ RANGE

GRAN TOURISMO TRANSATLANTIC MODELS

GLOBAL MODELS



Model	GTT 100	GTT 115	GTT 135	GTT 165	G 300	G 330	G 380
LOA	30 m / 100'	35.5 m / 115'	41 m / 135'	50 m / 165'	30.5 m / 100'	33,5 m / 110'	38 m / 125'
Beam	7,5 m / 24'7"	7.1 m / 23'3"	8.2 m / 26'11"	8.5 m / 27'10"	7.5 m / 24'7"	8.5 m / 27'10"	8.5 m / 27'10"
Draft	1.45 m / 4'9"	1.45 m / 4'9"	1.8 m / 5'3"	2 m / 6'6"	1.45 m / 4'9"	1.8 m / 5'3"	2.4 m / 7'10"
Max speed	25 knots	21 knots	21 knots	20 knots	19 knots	16 knots	15 knots
Range	3,000 nm @ 10 knots	3,400 nm @ 10 knots	3,000 nm @ 12 knots	4,000 nm @ 12 knots	3,000 nm @ 10 knots	3,100 nm @ 10 knots	4,500 nm @ 10 knots
Engines	2x MAN 882 kW	2x MAN, 1,213 kW	2x MAN, 1,213 kW	2x MTU 8V 932, kW	2x MAN, 882 kW	2x MAN, 882 kW	2x MAN, 735 kW
Hull / superstructure	Aluminium, 5083	Aluminium, 5083	Aluminium, 5083	Aluminium, 5083	Aluminium, 5083	Aluminium, 5083	Steel / Aluminium
Tonnage	<200 GT	198 GT	299 GT	450 GT	200 GT	270 GT	400 GT
Guests	9 in 4 cabins	6 in 3 cabins / 8 in 4 cabins	11 in 5 cabins	10 in 5 cabins / 12 in 6 cabins	10 in 4 cabins	11 in 5 cabins	11 in 5 cabins
Crew	5 in 3 cabins	6 in 3 cabins	6 in 3 cabins	9 in 5 cabins	4 in 2 cabins	5 in 3 cabins	5 in 3 cabins
Build time	22 months	18 months	18 months	32 months	22 months	22 months	22 months
Price	starting at 8 900 000 €	starting at 12 500 000 €	starting at 16 500 000 €	starting at 24 750 000 €	starting at 9 150 000 €	starting at 12 700 000 €	starting at 18 600 000 €





LIVE SMART. BE DYNAMIQ.



16 QUAI JEAN CHARLES REY, 98000 MONACO

BEDYNAMIQ.COM