

**D Y N A M I Q**

***GTT 165***

***GTT 165***

## **THE OCEAN PASSAGEMAKER**

This excitingly innovative and tastefully refined 50 m (165 ft) superyacht is the largest in the Dynamiq GTT range, created for those seeking the ultimate in efficient performance and motion comfort.

In addition to the light and robust hull built of Sealium aluminum alloy, her cutting-edge technology includes a fast displacement round bilge hull, advanced stabilisation system, Hull Vane and active T-Foil (Hull Vane assist). Ten or twelve guests are luxuriously accommodated in five or six staterooms.

Capable of 21 knots and a range of 4,000 nautical miles, owners can also choose an optional hybrid propulsion system for even better efficiency and silent operation.

The GTT 165 is your exclusive home on the water for exploring the world in the company of family and friends.



*GTT 165*

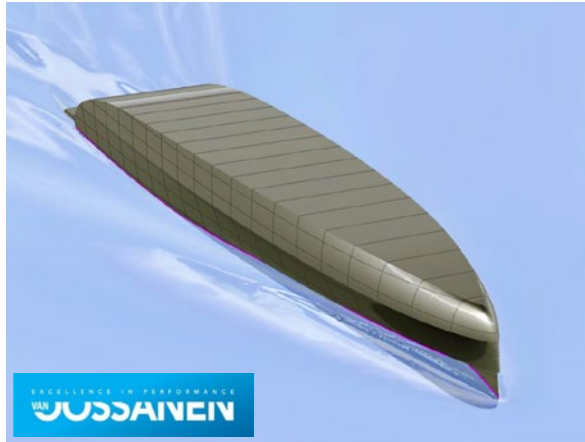


Carrara White



# KEY FEATURES

# GTT 165



## 1 Hull

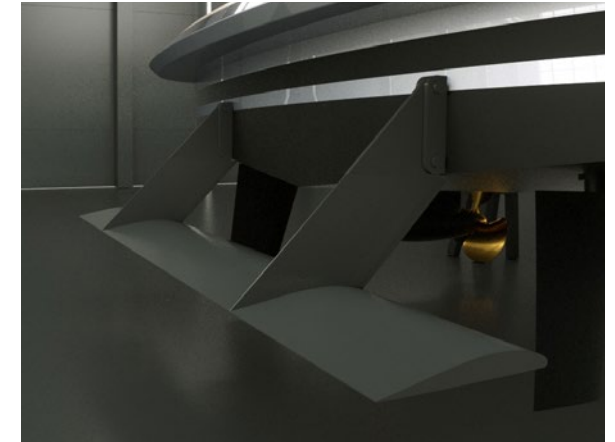
Drawn by the famous Dutch naval architects Van Oossanen, the GTT 165 unique hull features a round-bilge shape for remarkably low resistance and low fuel consumption, while still being capable of high speeds. The design decreases vertical accelerations in the hull, which translates into a far more comfortable motion when sailing. The avant-garde bow shape with a vertical stem maximises the waterline length, enhancing performance even more. To keep spray levels low, an integrated spray rail deflects water hitting the bow area.

Built entirely from marine grade aluminium, the GTT 165 hull guarantees unparalleled comfort and safe operation for more than 25 years.



## 2 Glass

The GTT 165 features next-generation laminated XIR glass that allows maximum light transmission, while keeping solar heat gain at bay. Harmful UV rays are almost completely blocked, and heat transmission reduced by 60%. The result is an interior that offers the wide panoramas of large windows without the penalty of heat build-up. This means significantly reduced air-conditioning loads and therefore lower running costs. The glass manufacturer is Isoclima, an Italian high-tech company that also supplies glass for luxury automobiles such as Bentley, McLaren, Mercedes and BMW.



## 3 Hull Vane® (option)

The Hull Vane® is a patented fixed foil located below the stern of a ship. Developed by renowned Dutch naval architects Van Oossanen it influences the stern wave pattern and creates hydrodynamic lift, which is partially oriented forward. This innovation leads to significant reduction of the hull's resistance, which in turn enables the installation of much smaller engines, fuel savings and longer range. The Hull Vane® also improves stability under way and at anchor, while reducing both pitching and yawing motions.



# KEY FEATURES

***GTT 165***



**4** Bottega Veneta exclusive furniture collection



**5** Japanese Teppanyaki on Sundeck



**6** Upper saloon fireplace



**7** Cinema room & High-end audio by Bowers & Wilkins



# MAIN SPEC

# GTT 165

Interior deck heights

2200	Sun deck
2200	Main deck
2150	Lower deck



Length overall:	50 m / 165'
Beam:	8.5 m / 27'10"
Draft:	2 m / 6'6"
Material:	Full aluminium, 5083
Hull type:	Round bilge, fast displacement
Tonnage:	450 GT

Max speed GTT 165:	20 knots
Main engines:	2x MTU 8V2000M94, 932 kW
Propulsion:	2x 1,450 mm 5 blades props
Range:	2,650 nm (Transat) @ 17 knots 4,000 nm @ 12 knots

Fuel Consumption:	632 l/h @ max speed
-------------------	---------------------

Generators:	2x 100 kW, Kohler
Stabilisers:	2x 3.5 m2 Stabilizer fins, Naiad Hull Vane® + Assisted Hull Vane®

Fuel:	50,000 l / 13,210 US gallons
Fresh water:	17,500 l / 4,625 US gallons

Guests:	10 in 5 cabins / 12 in 6 cabins
Crew:	9 in 5 cabins

Tender:	Castoldi Jet 23'
---------	------------------

Class:	RINA commercial, LY3 compliant
Notations:	RINA Comfort Class, RINA Green Star

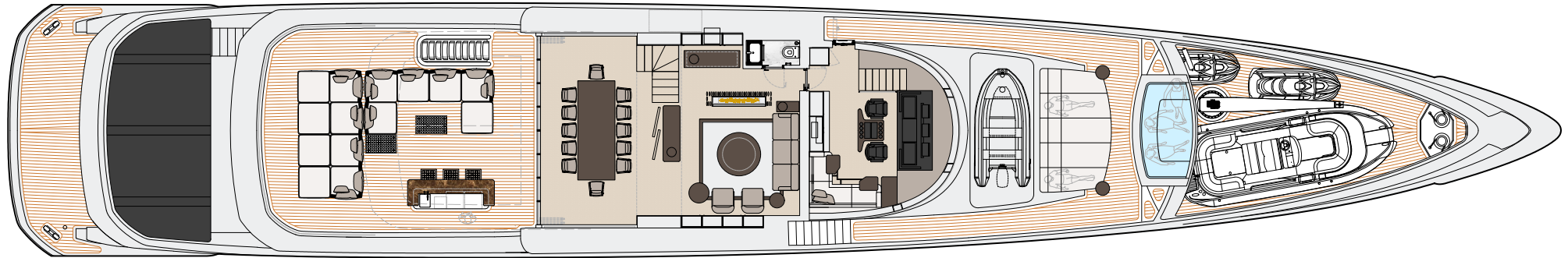
Naval architecture:	Van Oossanen NA
Exterior design:	Dobroserdov Design
Interior design:	Giuseppina Arena / Dynamiq

Construction time:	32 months
Base price:	€ 27,500,000

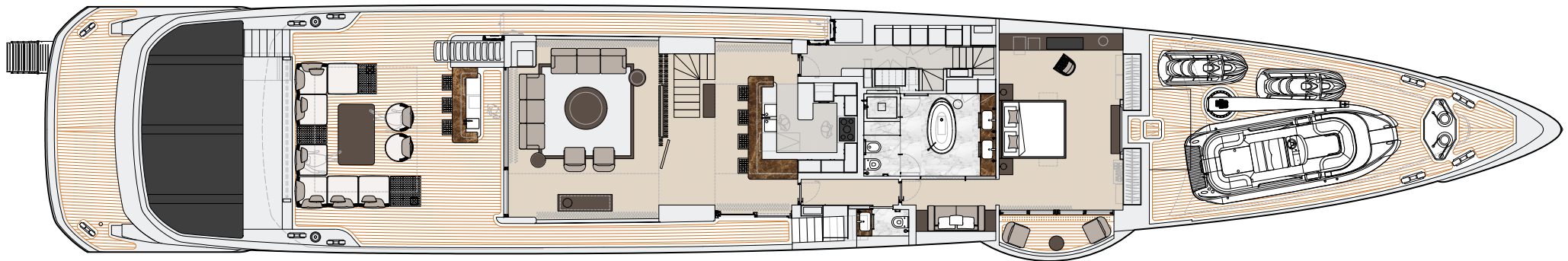


# DECK PLANS

# GTT 165



Upper deck



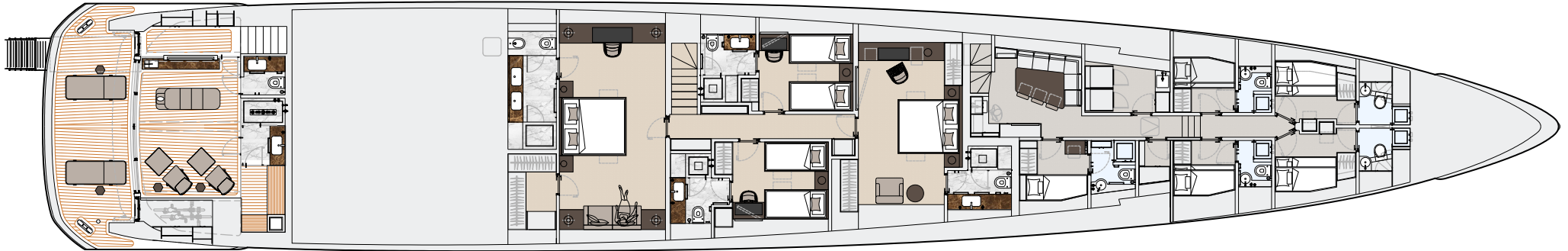
Main deck

This drawing is the property of Dynamiq Yachts SARL and is not to be modified, used or reproduced in whole or part without written permission.

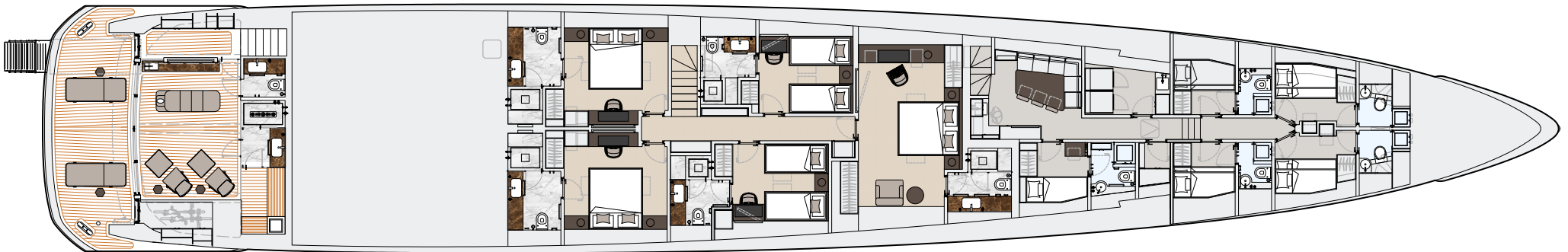


# DECK PLANS

# GTT 165



Lower deck (5 cabins)



Lower deck (6 cabins)

This drawing is the property of Dynamiq Yachts SARL and is not to be modified, used or reproduced in whole or part without written permission.





# ***GTT 165***



# ***GTT 165***



# ***GTT 165***



# ***GTT 165***



# ***GTT 165***



***GTT 165***



# ***GTT 165***



# ***GTT 165***





***GTT 165***



**Bright Atlantic Blue Metallic**



***GTT 165***



**Brown Diamond Metallic**



# PRICE, OPTIONS & PAYMENT TERMS

# *GTT 165*

## BASE PRICE:

€ 27,500,000

## OPTIONS\*:

<input type="checkbox"/> GTS version (25 knots)	€ 750,000
<input type="checkbox"/> Hybrid (e-motors + generators)	coming soon
<input type="checkbox"/> Hull Vane® + Assisted Hull Vane®	€ 385,000
<input type="checkbox"/> «Silent» package (extra insulation, double glass)	€ 215,000
<input type="checkbox"/> "Stabilisation Plus" package	€ 155,000
<input type="checkbox"/> Upper deck Sky Lounge	€ 385,000
<input type="checkbox"/> 6 guest cabins	€ 85,000
<input type="checkbox"/> Sun deck aft pool with sunpads	€ 57,000
<input type="checkbox"/> Forward sunpad	€ 14,000
<input type="checkbox"/> Metallic paint for hull and superstructure	€ 125,000
<input type="checkbox"/> Minotti for Dynamiq package	€ 275,000
<input type="checkbox"/> Fine marbles in luxury areas	€ 79,000
<input type="checkbox"/> Tender Castoldi 21' (full options)	€ 150,000
<input type="checkbox"/> Bowers & Wilkins hi-end audio package	€ 49,000
<input type="checkbox"/> VSAT Intellian V100G antennae	€ 47,000

## PAYMENT TERMS:

Contract signature	10%
Keel laying	25%
Main engines installed	25%
Interior installation start	25%
Launch	10%
Delivery	5%

## BUILD TIME:

32 months

\* More options are available at [bedynamiq.com](http://bedynamiq.com)



# STRINGENT STANDARDS

# *GTT 165*

In order to create a perfect yacht, from the outset Dynamiq decided to comply with the strictest requirements for comfort and safety. Every Dynamiq yacht is built in accordance with the latest Large Yacht Code (LY3) commercial regulations. This not only makes them ultra safe, but also means they can be chartered to provide an income for their owners.

Dynamiq and its partners are deeply aware of the need for sustainability. We strongly believe that eco-friendly yachts are a requirement for today's owners and their guests. That is why our yachts feature fuel-efficient hulls and reduced air-conditioning loads thanks to special XIR laminated glass.

We are genuinely committed to protecting the world's oceans, coastlines and the global ecology by reducing fuel consumption and emissions through innovative waste management solutions. All Dynamiq yachts are designed and built to meet the strict environmental standards of RINA's Green Star Plus notation.

Moreover, intensive research into reducing sound and vibration and the use of modern insulation materials create a near silent yacht with exceptional acoustic privacy between cabins. These elevated levels of comfort for passengers and crew have been rewarded with RINA's prestigious Comfort Class notation.



# WELCOME TO THE NEXT-GENERATION WORLD

Dynamiq is a Monaco-based builder of superyachts with unique functionality. Using leading-edge technology and elaborate hydrodynamic research, Dynamiq has created a family of all-aluminium yachts that combine the 20-knot-plus maximum speeds of sport cruisers with the comfort and 3,000-mile range of displacement vessels. We call this new yacht category Gran Turismo Transatlantic, or GTT for short.

The brand was started in 2011 by experienced yacht broker and designer Sergei Dobroserdov, who assembled a “dream team” of world thinkers, designers and naval architects to design and fine-tune a new concept in yachting.

Dynamiq is also the first company in the superyacht industry to introduce an Online Configurator, allowing our yachts to be easily and transparently customised down to the last detail.

Our yachts are built in a modern facility in Viareggio on Italy’s Tuscan coast under strict supervision and meticulous quality control.

## ***GTT 165***



# DYNAMIQ RANGE 2019-2020



Model	<i><b>GTT 100</b></i>	<i><b>GTT 115</b></i>	<i><b>GTT 135</b></i>	<i><b>GTT 165</b></i>
<b>LOA</b>	30 m / 100'	35.5 m / 115'	41 m / 135'	50 m / 165'
<b>Beam</b>	7.1 m / 23'4"	7.5 m / 24'5"	8.2 m / 26'11"	8.5 m / 27'10"
<b>Speed max.</b>	25 knots	22 knots	21 knots	20 knots
<b>Engines</b>	2x MAN V12-1650 1,213 kW	2x MAN V12-1650 1,213 kW	2x MAN V12-1650 1,213 kW	2x MTU 8V2000M94 932 kW
<b>Guest / cabins</b>	8 in 4 cabins	6 in 3 cabins / 8 in 4 cabins	10 in 5 cabins	12 in 6 cabins
<b>Crew / cabins</b>	5 in 3 cabins	6 in 3 cabins	6 in 3 cabins	9 in 5 cabins
<b>Build time</b>	21 months	22 months	24 months	32 months
<b>Base price</b>	<b>€ 8,900,000</b>	<b>€ 12,500,000</b>	<b>€ 16,500,000</b>	<b>€ 27,500,000</b>





**LIVE SMART. BE DYNAMIQ.**

18 QUAI JEAN CHARLES REY, 98000 MONACO

[BEDYNAMIQ.COM](http://BEDYNAMIQ.COM)