



M/Y SOPRANO

SOPRANO is a 38 meters motor yacht built by Hakvoort and launched in 2017. The interior has a classic character with contemporary accents. A combination of rich stained mahogany panels with wood panels painted in matt white lacquer above the wainscot have been used.

One of her key features is the foldout platform amidships, providing easy access to the water for boarding and swimming. Suitable for global bluewater cruising, SOPRANO's sun deck offers a wealth of open space for sunbathing, a large Jacuzzi forward, a BBQ as well and a bar.



ДЛИНА

38.35m



ШИРИНА

8m



ОСАДКА

2.65m



МАКСИМАЛЬНАЯ СКОРОСТЬ

13kn



ГОСТЕЙ/КАЮТ

8/4



КОЛИЧЕСТВО ЧЛЕНОВ
ЭКИПАЖА

7



ВЕРФЬ

Hakvoort



ГОД ПОСТРОЙКИ

2017

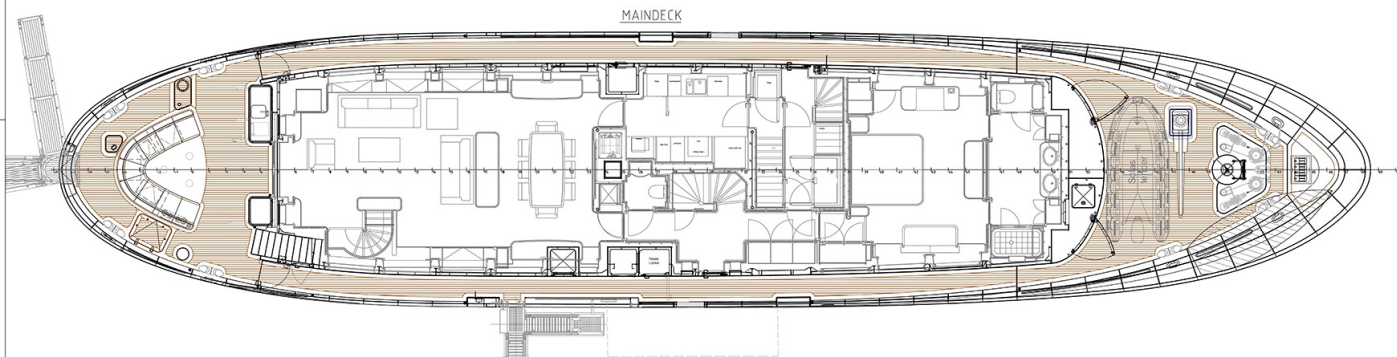


ЦЕНА ЗА НЕДЕЛЮ

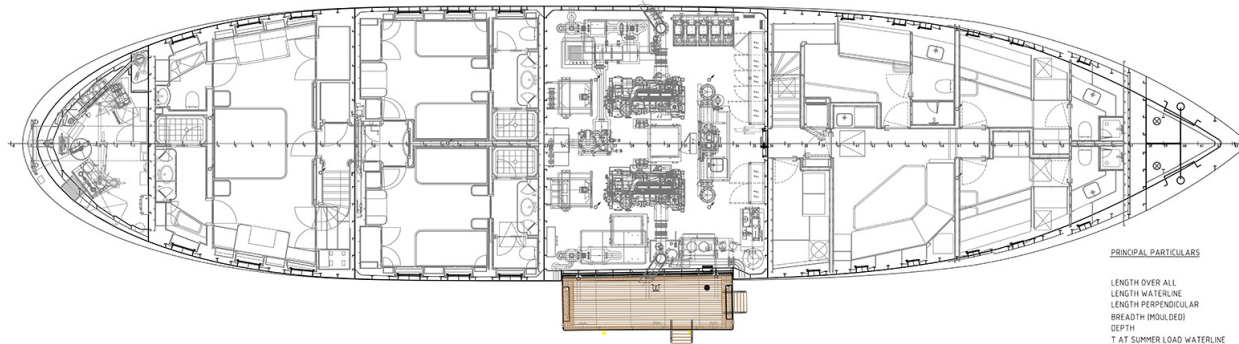
От 110,000€



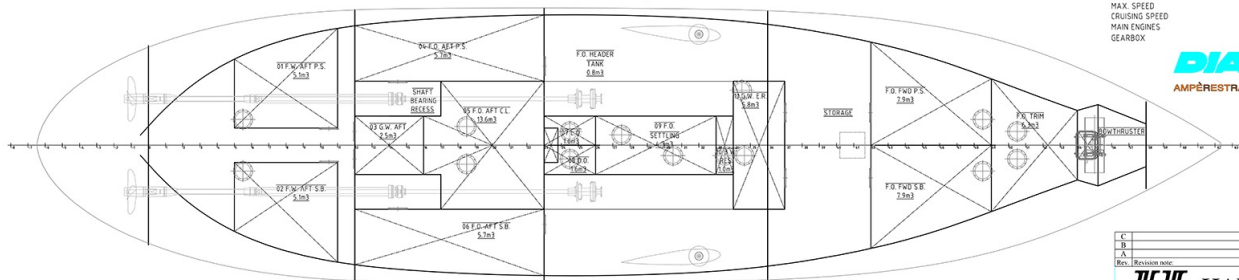
MAINDECK



CABINDECK



TANKPLAN



PRINCIPAL PARTICULARS

LENGTH OVER ALL 38.35 m
LENGTH WATERLINE 32.91 m
LENGTH PERPENDICULAR 32.12 m
BREADTH (MOULDED) 8.00 m
DEPTH 4.40 m
T AT SUMMER LOAD WATERLINE 2.45 m
SCANTLING DRAFT 2.60 m
MAX. SPEED 12.5 knots
CRUISING SPEED 11.0 knots
MAIN ENGINES 2 x CATERPILLAR C18 ACERT 447 kW @ 1800 rpm
GEARBOX REINTJES WAF264L RATIO 4.51

DIANA YACHT DESIGN
AMPERESTRAAT 13-A, 1817 DE ALKMAAR, HOLLAND

BUYTENDIJK
YACHTBUREAU

C					
B					
A					
Rev.	Revision note	Drawn by	Revision date		
 HAKVOORT SHIPYARD					
General arrangement					250
Drawn by: GJK	Drawn date: 16-09-2015	Format: A0+	Draw scale: 1:50	Drawing No: 250-002.01	Sheet: 1/1
Revision: 0					0
The drawing is copyright of HAKVOORT SHIPYARD and may not be reproduced, stored in a retrieval system or transmitted in any form or by any means, electronic, mechanical, photocopying, recording, or by any information storage and retrieval system. © 2015 Hakvoort Shipyard					





























НАШИ КОНТАКТЫ

45 rue Grimaldi
98000 Monaco

Info@dynamiqbrokerage.com

© 2024 DYNAMIQ YACHTS, SARL. All rights reserved.