



# M/Y BOADICEA

Designed by Terence Disdale, Boadicea was built in steel and aluminum by Dutch yard Amels.

One of the utmost striking features of the vessel, beside the grand salon with a spectacular five meters ceiling height, a dramatic atrium - style area, is the magnificent newly created full beam Master Suite located forward on the upper deck. Master Suite is respectively including a spacious shower and Jacuzzi and astonishing 180 degrees panoramic view along with an additional privately accessible private deck. BOADICEA can comfortably accommodate for 16 guests in 8 cabins.



ДЛИНА

76m



ШИРИНА

14m



ОСАДКА

4.2m



МАКСИМАЛЬНАЯ СКОРОСТЬ

15kn



ГОСТЕЙ/КАЮТ

16/8



КОЛИЧЕСТВО ЧЛЕНОВ  
ЭКИПАЖА

23



ВЕРФЬ

AMELS



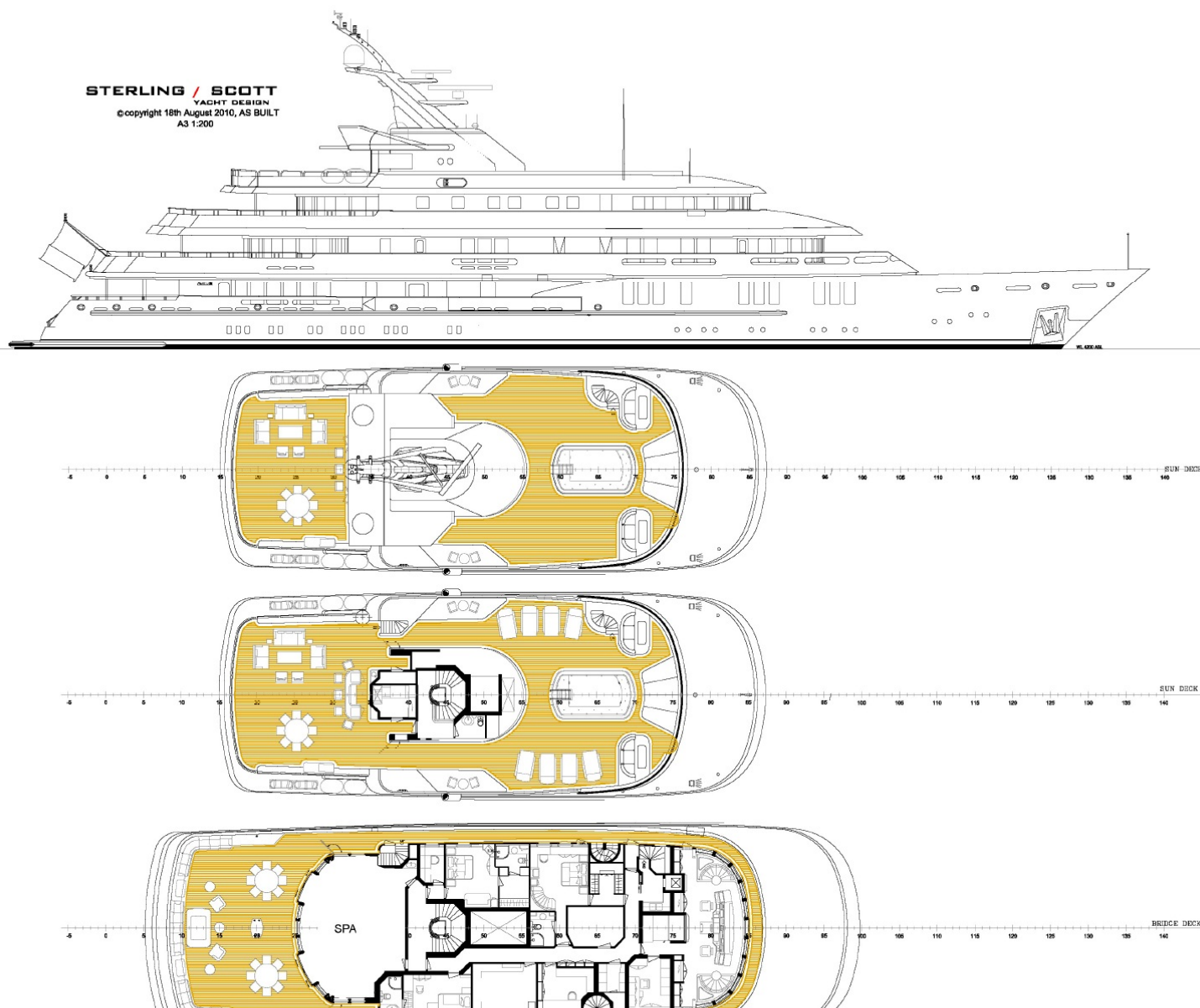
ГОД ПОСТРОЙКИ

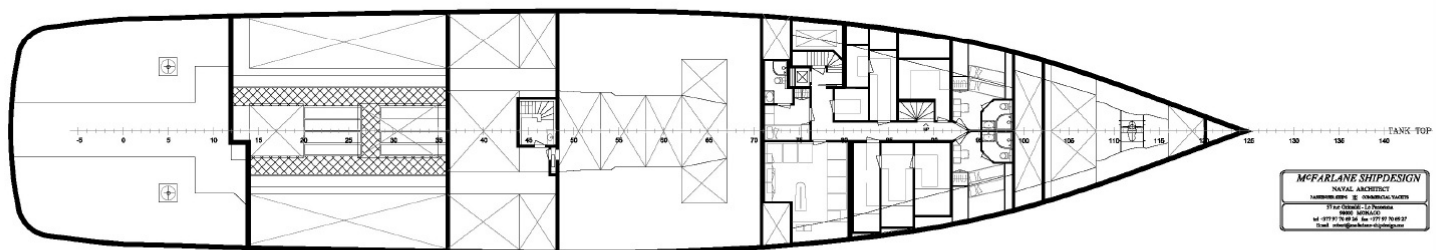
1999/2017



ЦЕНА ЗА НЕДЕЛЮ

От 525,000€





**McFARLANE SHIPDESIGN**  
NAVAL ARCHITECT  
TAPERED KEELS ■ COMMERCIAL YACHTS  
37 rue Océan - La Penitence  
99000 MOIRA, CO  
tel : (377) 97 70 00 fax : (377) 97 70 05 27  
Email : [mcfarlane@netnet.com](mailto:mcfarlane@netnet.com)

GENERAL ARRANGEMENT		REB GA-001	
DRAWN: Sterling Scott McPartee Shipdesign	DATE: August 2010	SHEET 2 OF 3	REV
CHECKED: RJM	SCALE: 1/200	SHEET SIZE A3	





























## НАШИ КОНТАКТЫ

45 rue Grimaldi  
98000 Monaco

[Info@dynamiqbrokerage.com](mailto:Info@dynamiqbrokerage.com)

© 2025 DYNAMIQ YACHTS, SARL. All rights reserved.