



M/Y KANGA

Launched in 2012 by the respected Monaco-based builder Wally Yachts, the 26m motor yacht Kanga is the first unit belonging to the successful displacement line WallyAce. With exterior styling and interior design by Wally and Luca Bassani, the Kanga superyacht's design is the result of the shipyard, Allseas as well as Luca Bassani Design's marvellous collaboration.

Providing simple and fresh interiors, the WallyAce superyacht Kanga can accommodate 10 guests in comfort and luxury.



ДЛИНА

26.23m



ШИРИНА

7.75m



ОСАДКА

1.75m



МАКСИМАЛЬНАЯ СКОРОСТЬ

13kn



ГОСТЕЙ/КАЮТ

9/4



КОЛИЧЕСТВО ЧЛЕНОВ
ЭКИПАЖА

5



ВЕРФЬ

Wally



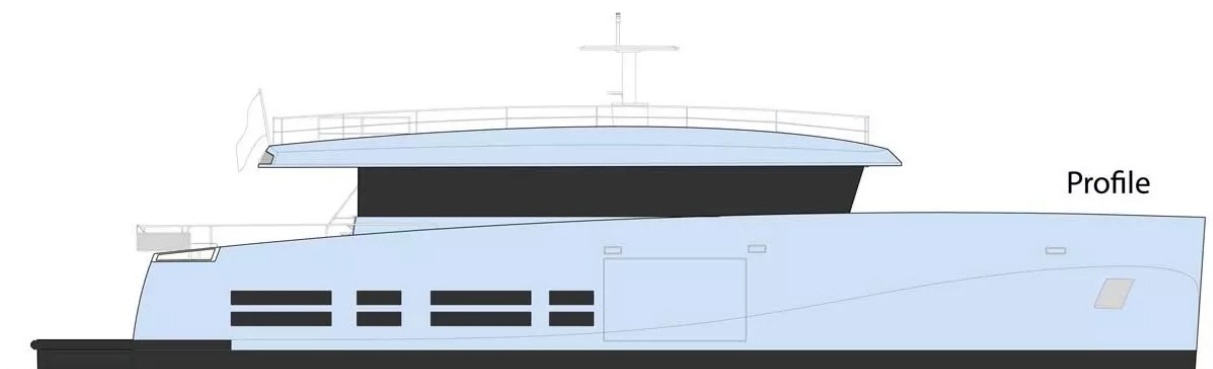
ГОД ПОСТРОЙКИ

2012

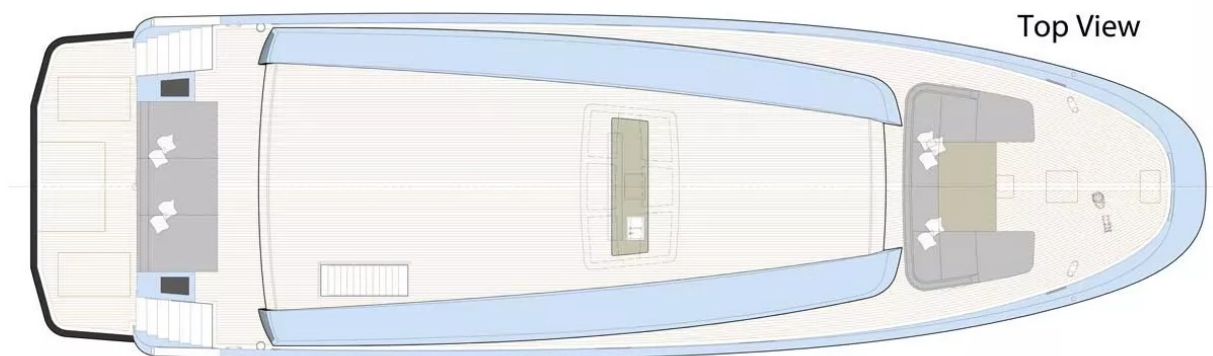


ЦЕНА ЗА НЕДЕЛЮ

От 50,000€



Profile

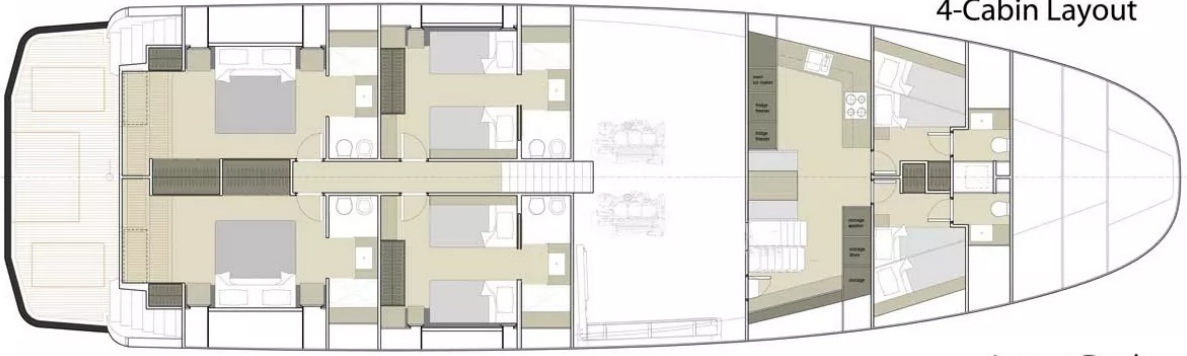


Top View



Main Deck

Lower Deck
4-Cabin Layout



Lower Deck
3-Cabin Layout

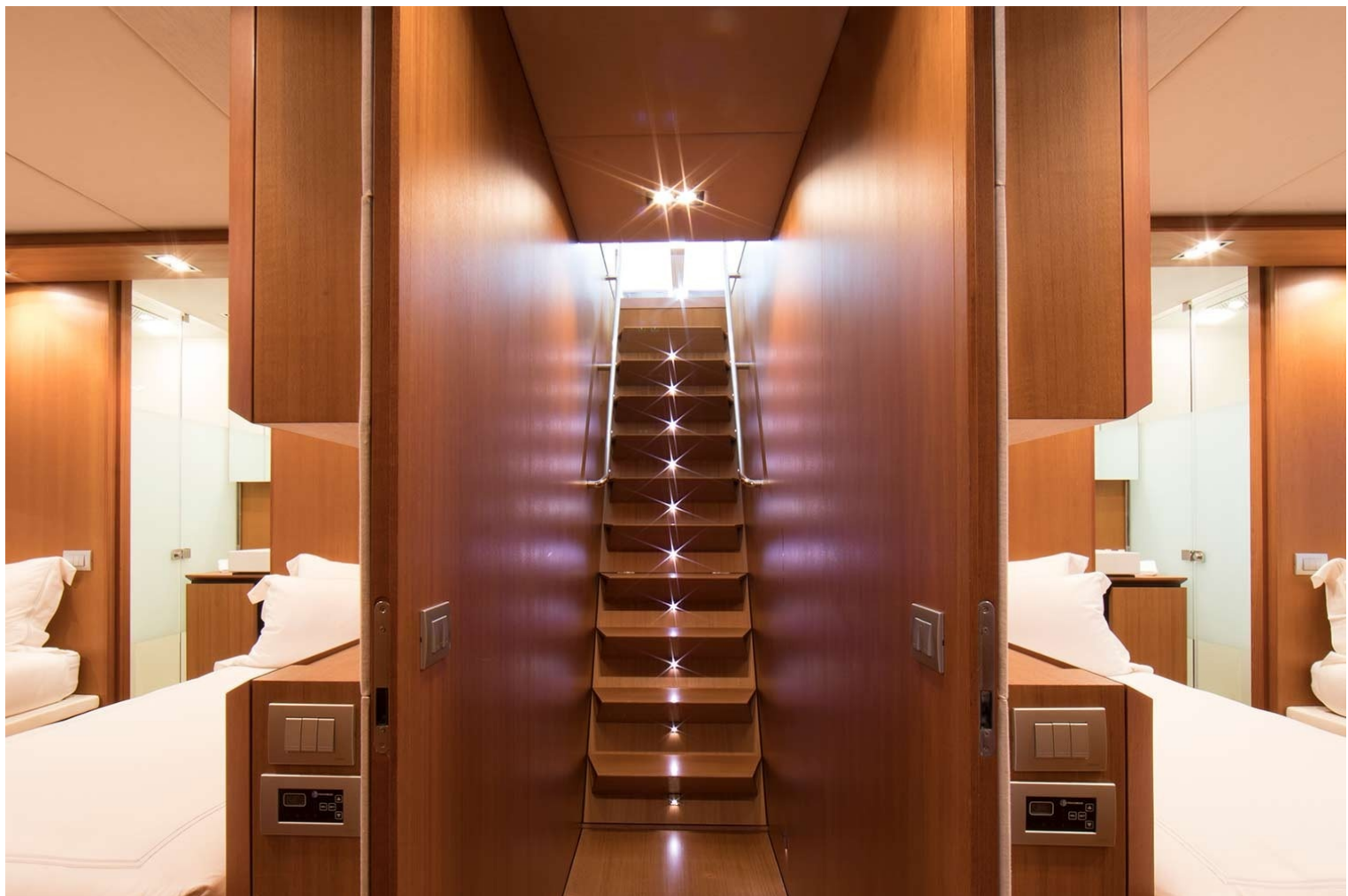




































НАШИ КОНТАКТЫ

45 rue Grimaldi
98000 Monaco

Info@dynamiqbrokerage.com

© 2025 DYNAMIQ YACHTS, SARL. All rights reserved.