



M/Y LADY MAY

LADY MAY is truly an exceptional yacht in her class. Built by the world renowned Feadship, Lady May was delivered to her owner in 2014. The naval architecture was done by Dubois with RWD being responsible for the interior styling. She sleeps up to 10 guests in 5 cabins accommodated by 8 members of crew. The two 1416kW CAT engines allow for a maximum speed of 19kn with a cruising speed of 15kn. The combination of the design, performance and comfort have led Lady May to winning a succession of awards in 2015 such as World Superyacht Awards 2015 where she placed 1st in the 38m + range. This yacht is truly a gem and her future owner will not be disappointed.



ДЛИНА

46.2m



ШИРИНА

9m



ОСАДКА

2.2m



МАКСИМАЛЬНАЯ СКОРОСТЬ

19kn



ДВИГАТЕЛИ

2 x CAT, 1416kW



ГОСТЕЙ/КАЮТ

10/5



КОЛИЧЕСТВО ЧЛЕНОВ
ЭКИПАЖА

8



ВЕРФЬ

Feadship



ГОД ПОСТРОЙКИ

2014



ЦЕНА

24,900,000€

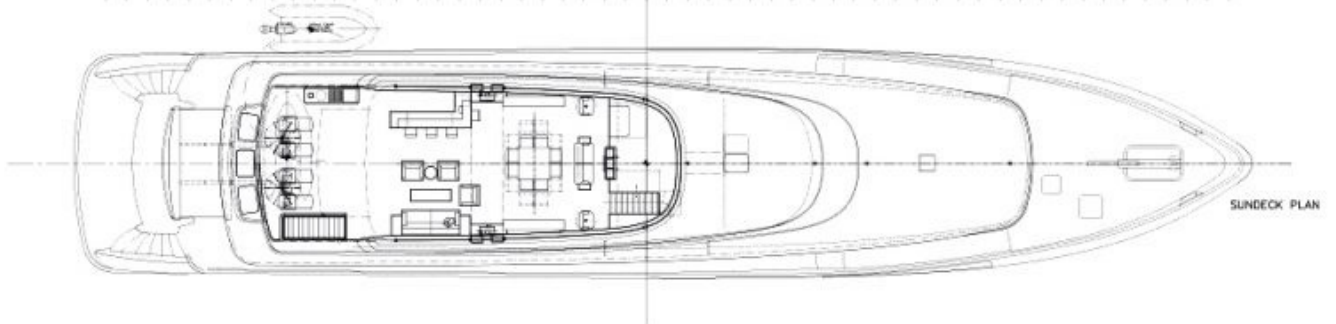
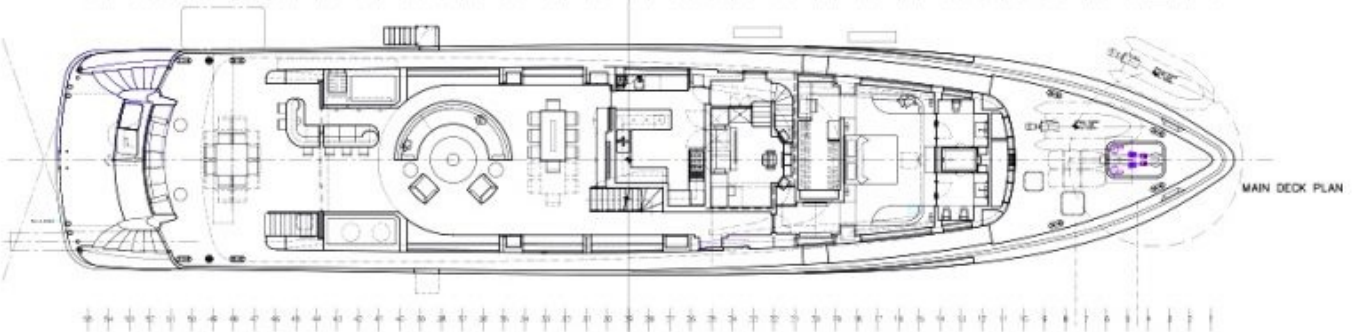






Photo @ Feadship



Photo @ Feadship







НАШИ КОНТАКТЫ

45 rue Grimaldi

98000 Monaco

Info@dynamiqbrokerage.com

© 2025 DYNAMIQ YACHTS, SARL. All rights reserved.