



M/Y SAGE

The 40m Admiral Yacht SAGE was delivered in July 2017 in Carrara, Italy. She is the best of the 40m raised pilot house Impero's built to date. The minimalistic interior design by Gian Marco Campanino and exterior features by Admiral were carefully curated by the owner and GMC design, with a unique Ethereal Blue hull color inspired by the summertime Italian Riviera skies. After 2 years of solely private use, and found in turn-key condition, SAGE is ready to be delivered to her new owner. Vessel Walkthrough Step aboard the unique Admiral Yacht SAGE either via beach club or starboard side boarding staircase leading up to the large aft deck lounge area with comfortable seating options. As you move forward, double automatic electric doors lead you to the minimalistic main salon with one port side sumptuous L-shaped Minotti sofa and one straight sumptuous Minotti sofa on starboard side accompanied by a large lounge chair. Dividing the main salon from the formal dining area is a console for tableware with a rise and fall television and starboard side cupboard for glassware. On either side of the formal dining table with seating for up to 10 guests are sliding glass doors allowing unobstructed views and a cool sea breeze while you dine, accompanied by a port side day head.

A starboard side hallway leads you directly to the full-beam Owner's Suite which is minimally yet tastefully decorated and accompanied by a full-beam master en-suite head with rain shower and upgraded Carrara marble. On either side of the master stateroom, vast windows allow ample natural light as the ebony woods complement the light soft goods. On port side, you will find a large chaise lounge, while on starboard side there are a large desk and spacious storage

dresser.

Head aft through the hallway which leads you to access the carpeted staircase down to the four below deck staterooms. Below deck aft you will find the full-beam 2nd Owner's Stateroom with desk area, storage and wood sliding doors leading to a large en-suite head with upgraded Carrara marble. On both port and starboard are convertible twin staterooms with en-suite heads, and each with a pullman bed. Forward, you will find the VIP stateroom with large storage closet, desk and en-suite head, as well as an additional pullman bed.

Heading back up the under-lit stairs, turn to port side to enter through an electric sliding door to the service pantry equipped with wine cooler, ice-maker, dishwasher and sink before reaching the large fully-equipped galley. A staircase leads down to the crew mess which has accommodations for 7 crew in 4 cabins including a private double berth captain's cabin, as well as the laundry room with double washers and dryers.

Back up the stair case, one can access the bridge which is equipped with fully up to date LCD monitors and navigational equipment. The bridge features a Besenzoni captain's chair surrounded by additional seating. Up a small set of stairs there is access to the beautiful, spacious sun deck which boasts a large al fresco dining area for up to 10 guests as well as several lounging areas. Forward from the al fresco dining, you can overlook the bow which features large, comfortable seating areas and sunpads with optional sun awnings.

The exterior relaxation area on the sundeck allows you to enjoy 360 degree views featuring sunpads with storage space underneath, 4 large chairs and 2 large coffee tables with a cohesive minimalistic design. All the way aft are additional sunpads and lounge area which are covered by removable sun awnings. Dividing the dining area from the exterior relaxation area is a console equipped with fridge, ice maker and storage as well a 75" rise and fall television.

Leading down the stairs, there is access to the beach club with port side day head. This then leads to the tender garage equipped with ample storage and 3 refrigerators with an opening starboard side door before reaching the engine control room and the engine room.



ДЛИНА

39m



ШИРИНА

8m



ОСАДКА

1m



МАКСИМАЛЬНАЯ СКОРОСТЬ

19kn



ДВИГАТЕЛИ

**2 X Caterpillar C32
1925 hp**



ГОСТЕЙ/КАЮТ

12/5



КОЛИЧЕСТВО ЧЛЕНОВ
ЭКИПАЖА

7



ВЕРФЬ

Admiral



ГОД ПОСТРОЙКИ

2017



ЦЕНА

9,900,000€

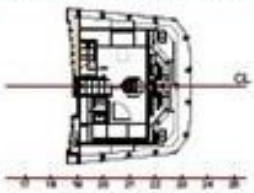
PROFILE



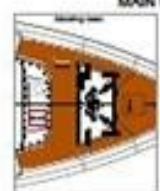
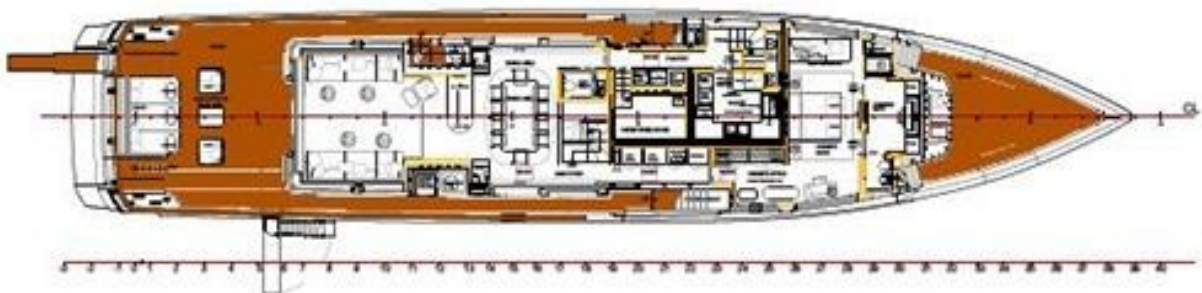
SUN DECK



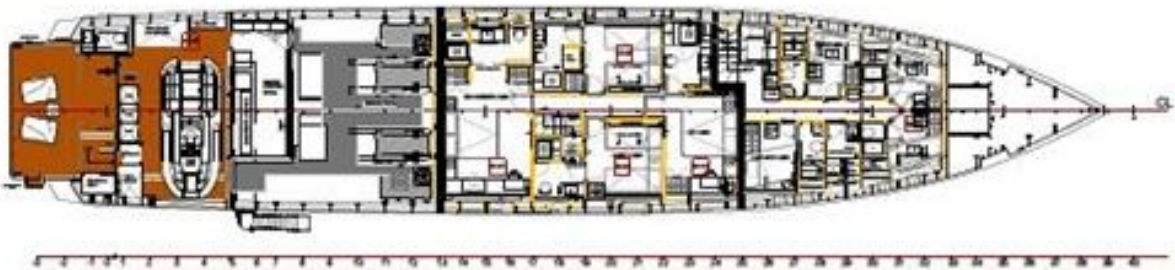
WHEELHOUSE



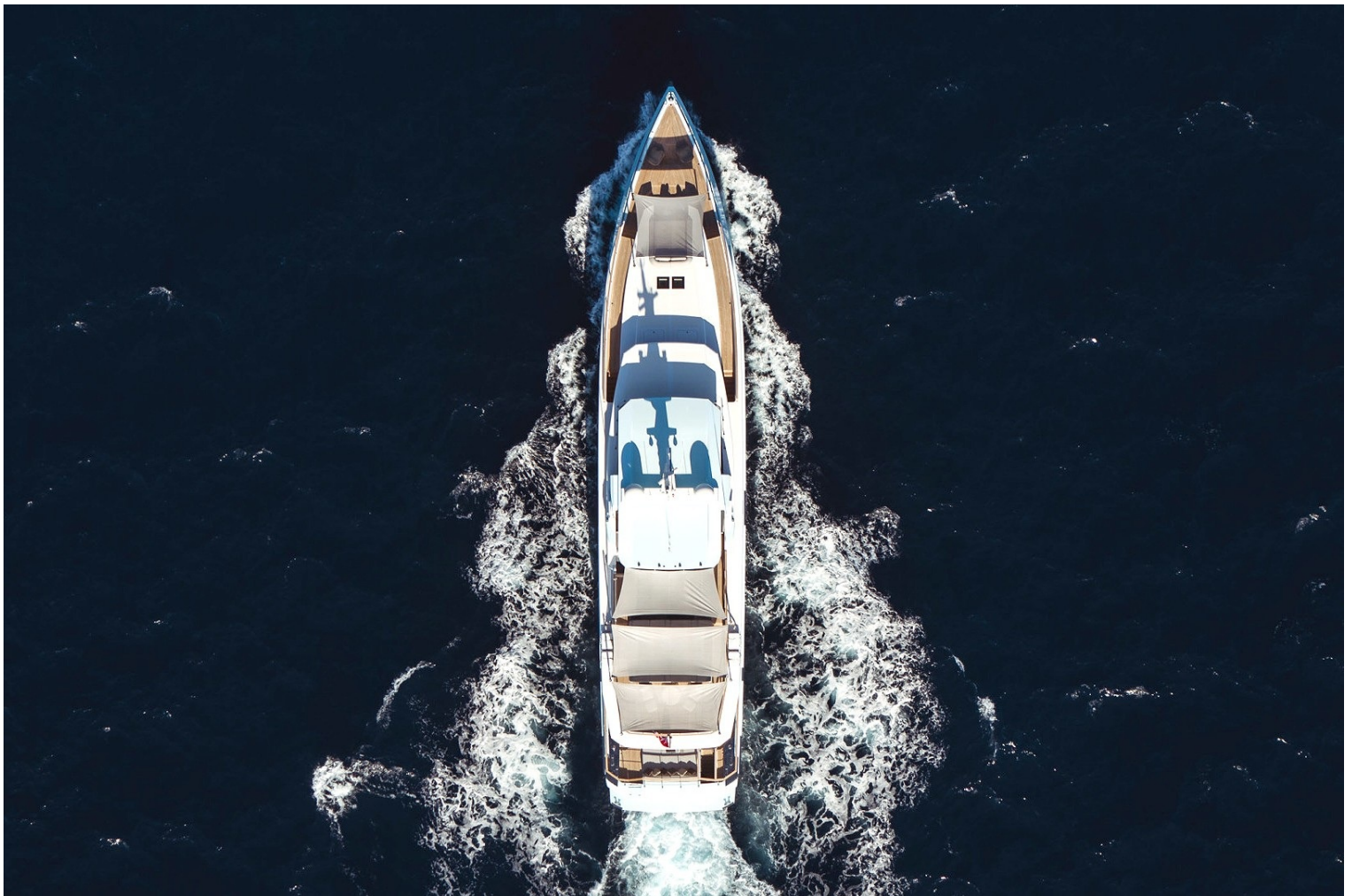
MAIN DECK



LOWER DECK





















НАШИ КОНТАКТЫ

45 rue Grimaldi

98000 Monaco

Info@dynamiqbrokerage.com

© 2025 DYNAMIQ YACHTS, SARL. All rights reserved.