



M/Y SAMA

The 35 GRANDE M/Y SAMA was built by Azimut Yacht in Italy, she was delivered to her owner in 2017. The D2P Displacement to Planing Hull designed by Pierluigi Ausonio in conjunction with the Azimut Benetti R&D Centre combines the comfort typical of a displacement hull with the performance of a planing hull and it significantly improved fuel efficiency. Unique in this category is the option to add an additional sundeck (almost 30 m²) on a third level, with access from the upper deck in the stern. This solution doesn't affect the balance of volumes and retains the model's overall dynamism. The yacht's interior has been designed by Achille Salvagni. She has a powerful classic beauty and has an elegant interior, tastefully decorated and perfectly maintained. Featuring accommodation for 10 guests in 5 cabins, 12 guests cruising, she is a great example of quality and style, well equipped with all the amenities, three decks, stabilized at anchor, with air conditioning throughout and owner's suite with instant balcony. Motor yacht SAMA comfortably cruises at 18 knots and can reach a top speed of 25,50 knots. Sole ownership, she is in turn key condition and absolutely mint condition.



ДЛИНА

35m



ШИРИНА

7m



ОСАДКА

1m



МАКСИМАЛЬНАЯ СКОРОСТЬ

25kn



ДВИГАТЕЛИ

2x MTU 1790 kw



ГОСТЕЙ/КАЮТ

12/5



КОЛИЧЕСТВО ЧЛЕНОВ
ЭКИПАЖА

6



ВЕРФЬ

Azimut



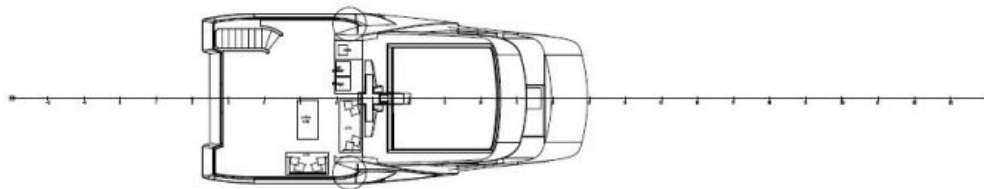
ГОД ПОСТРОЙКИ

2017

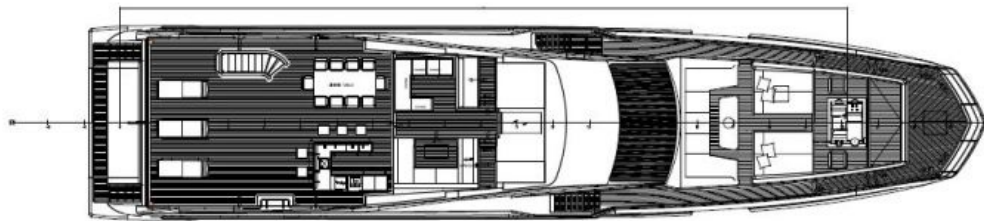


ЦЕНА

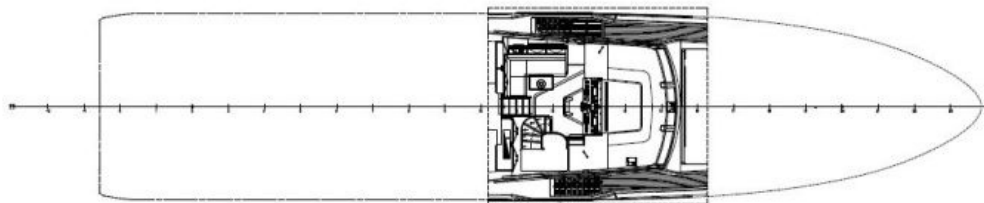
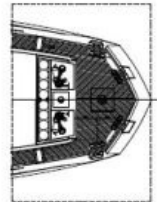
9,900,000€



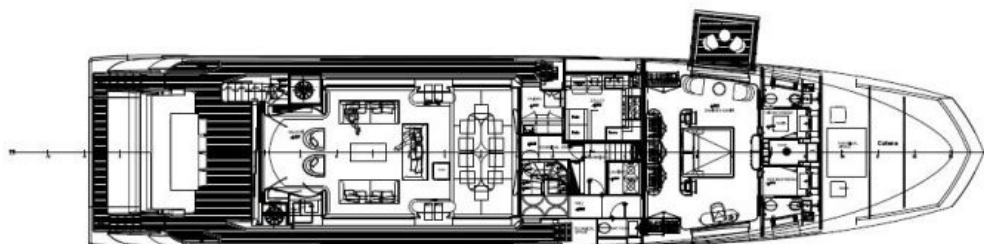
Sun deck- optional



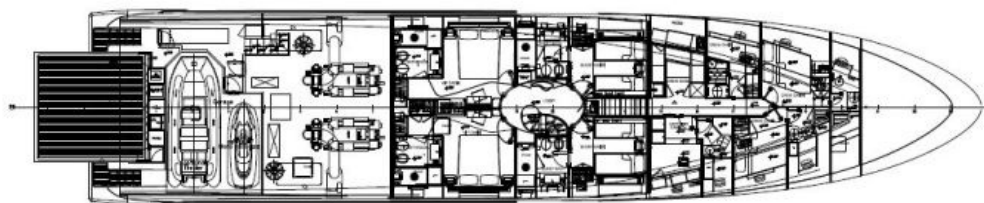
Fly bridge



Raised pilot house



Main deck



Lower deck









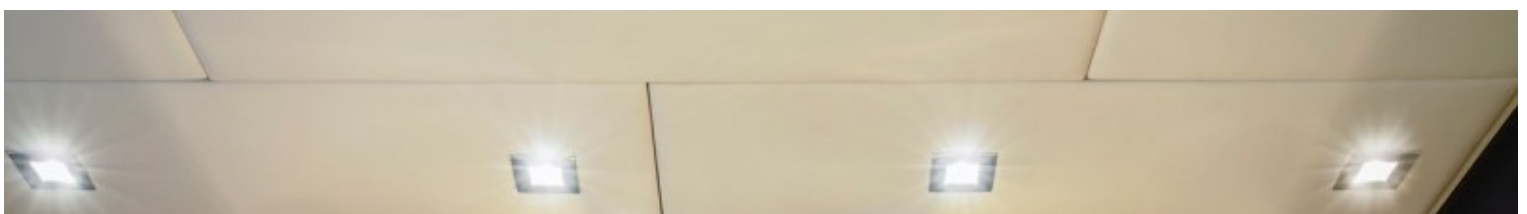




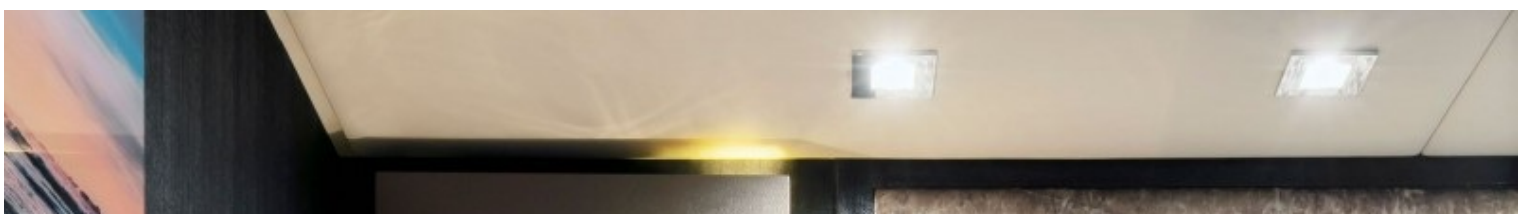
















НАШИ КОНТАКТЫ

45 rue Grimaldi

98000 Monaco

Info@dynamiqbrokerage.com

© 2025 DYNAMIQ YACHTS, SARL. All rights reserved.