



M/Y SAMSARA

SAMSARA is a RINA classed expedition motor yacht with an unrestricted navigational notation. She was commissioned in 2017/18 in Fort Lauderdale. She was designed to MCA / Lloyds Class 100A1 by noted naval architect John Overing. Samsara is an extremely efficient, stable, and safe boat due to her full displacement, hydrodynamic efficient, round bottom, steel hull (LR steel, 8 -16mm) and the light-weight marine grade aluminum superstructure.



ДЛИНА

30m



ШИРИНА

7m



ОСАДКА

2m



МАКСИМАЛЬНАЯ СКОРОСТЬ

14kn



ДВИГАТЕЛИ

2x Caterpillar 605
hp



ГОСТЕЙ/КАЮТ

8/4



КОЛИЧЕСТВО ЧЛЕНОВ
ЭКИПАЖА

4



ВЕРФЬ

Maxi Marine



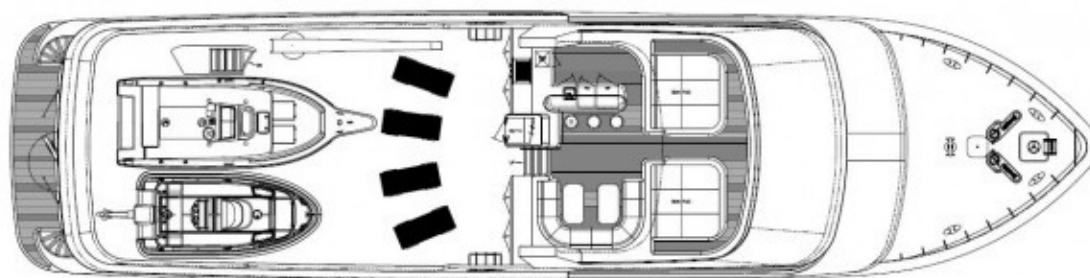
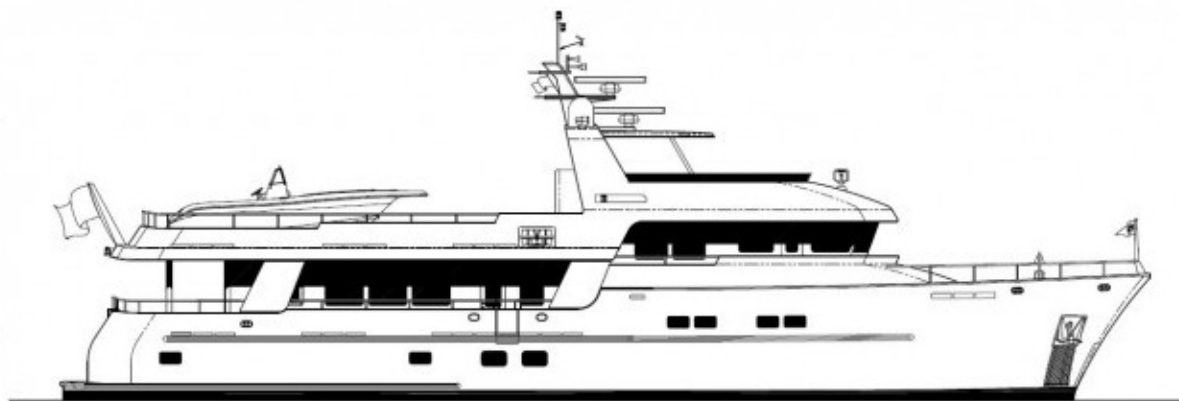
ГОД ПОСТРОЙКИ

2017

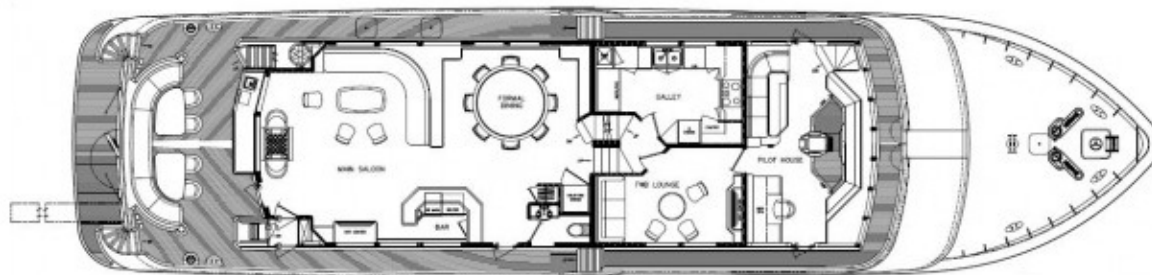


ЦЕНА

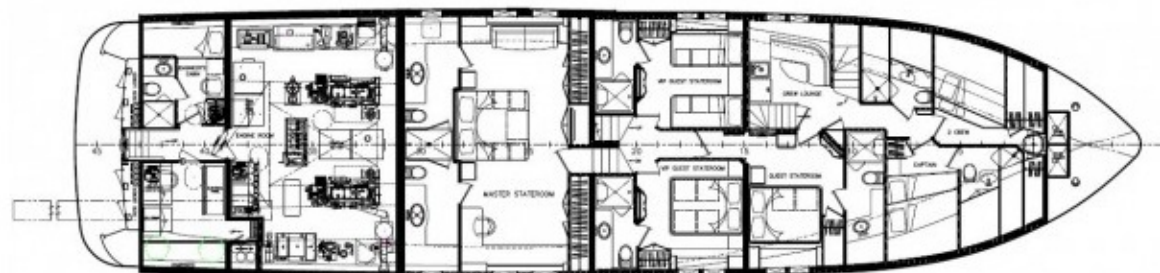
7,170,000€



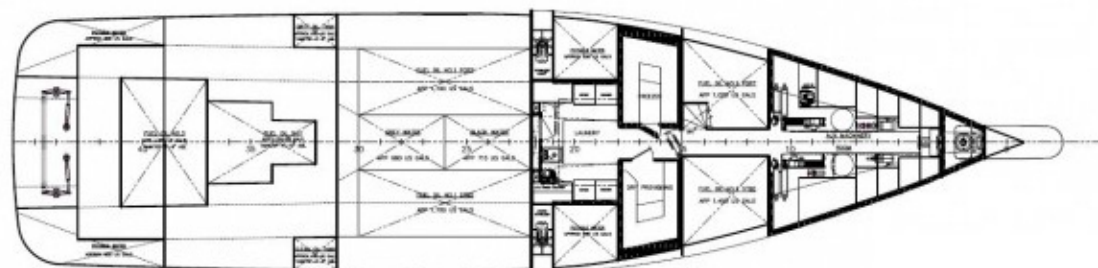
01 DECK & FLYBRIDGE



MAIN DECK



BELOW DECK



LOWER LEVEL











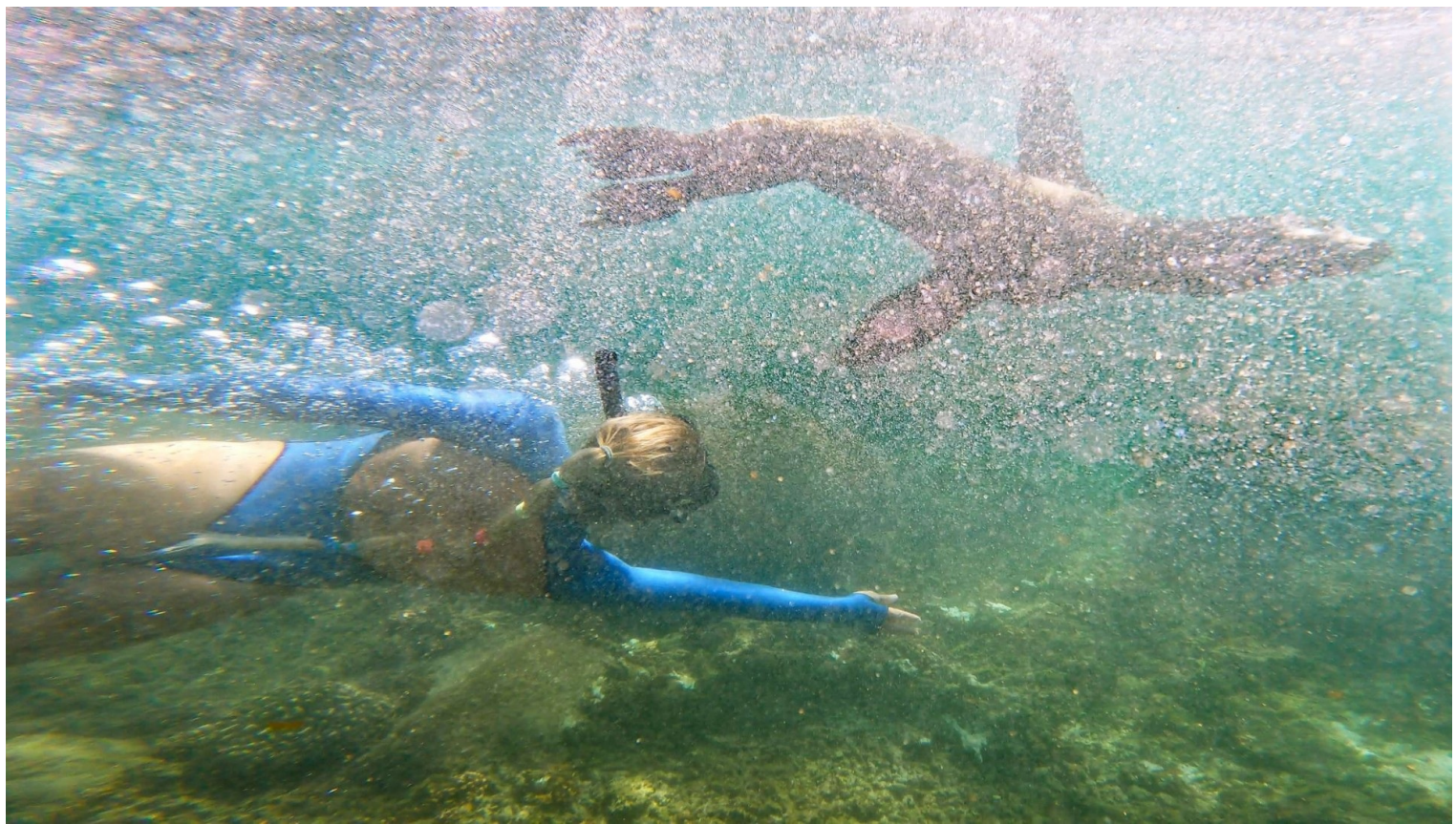


















НАШИ КОНТАКТЫ

45 rue Grimaldi

98000 Monaco

Info@dynamiqbrokerage.com

© 2025 DYNAMIQ YACHTS, SARL. All rights reserved.