



D Y N A M I Q

GLOBAL SERIES

G 500

GLOBAL BY NAME. BOUNDLESS BY NATURE.

The Global 500 is a next-generation explorer designed for serious cruising in ultimate comfort. Featuring a fast-displacement round-bilge hull in high-tensile steel with an aluminium superstructure, the 50-meter yacht delivers outstanding efficiency and stability, with a transoceanic range of 5,000 nautical miles at 10 knots. Powered by twin MAN engines, the Global 500 maintains a smooth, quiet ride.

The contemporary, loft-style layout includes a spacious VIP stateroom on the main deck with a dedicated office space and fixed balcony, an Owner's cabin on the upper deck for incredible views and privacy, four deluxe guest cabins on the lower deck, and a wellness area complete with spa, sauna, and hammam. Guests can enjoy expansive outdoor spaces including the hot tub on the Owner's deck, as well as the generously large bridge and observation decks, with space for gym equipment. A commercially certified helipad rated for 3,000 kg (D-value 12.7 m) provides seamless access in remote destinations.

The interior featuring Bentley Home boasts impressive ceiling heights of 2.2 metres throughout, combining elegance with exceptional liveability. A spacious garage accommodates an 8.6 m Axopar 25, a 5.7 m SOLAS Castoldi tender, and multiple water toys. Built to BV Commercial and REG standards with Comfort Class and Green Star notations (optional), the Global 500 redefines explorer yacht versatility for today's global travellers.



G 500

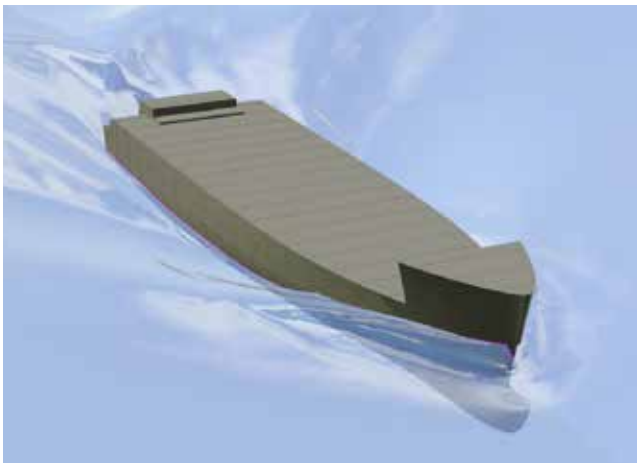


G 500



KEY FEATURES

G 500



Round bilge fast displacement hull

Drawn by the famous Dutch naval architects Vripack, the Global 500 unique hull features a round-bilge shape for remarkably low resistance and low fuel consumption, while still being capable of high speeds. The design decreases vertical accelerations in the hull, which translates into a far more comfortable motion when sailing. The avant-garde bow shape with a vertical stem maximises the waterline length, enhancing performance even more. To keep spray levels low, an integrated spray rail deflects water hitting the bow area.



Robust metal construction

Special high tensile steel, which is lighter than carbon steel, together with certified marine-grade 5083 aluminium and even stronger 5383 Sealium are used to build the Dynamiq Global 500 hull and superstructure. A lighter hull provides better performance, shallower draft and lower fuel consumption. Another benefit is that metal construction ensures a stiff, robust and vibration-free vessel that is very comfortable and seaworthy in a heavy swell or choppy conditions. Global 500 hull guarantees safe operation for more than 25 years.



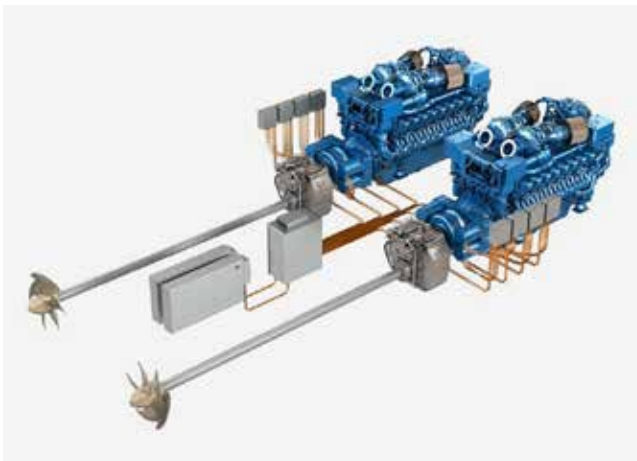
Curved fin stabilizers by Side Power

Vector Fins stabilisers dramatically reduce roll as well as undesired yaw and sway motions caused by active fins. Their vertical concave shape creates a net force direction, both in cruising and at-anchor modes, so the work is more up-down instead of side-to-side. By changing the net force angle, this also increases the leverage arm around the boat's rolling point, further increasing the physical forces that work on the boat to reduce roll. This provides more efficient stabilisation per fin size, which means that drag and power consumption are a lot less than with other fins offering comparable roll reduction.



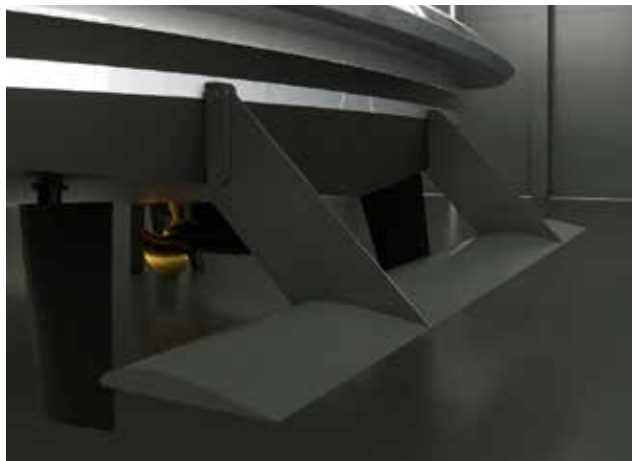
KEY FEATURES

G 500



Hybrid power plant (option)

With the main engines switched off, the generators power two 100 kW electric motors allowing the yacht to reach 8 knots in complete silence for an unlimited period of time



Hull Vane® (option)

The Hull Vane® is a patented fixed foil located below the stern of a ship. Developed by renowned Dutch naval architects Van Oossanen it influences the stern wave pattern and creates hydrodynamic lift, which is partially oriented forward. This innovation leads to significant reduction of the hull's resistance, which in turn enables the installation of much smaller engines, fuel savings and longer range. The Hull Vane® also improves stability under way and at anchor, while reducing both pitching and yawing motions.



XIR glass

The Global 500 features next-generation laminated XIR glass that allows maximum light transmission, while keeping solar heat gain at bay. Harmful UV rays are almost completely blocked, and heat transmission reduced by 60%. The result is an interior that offers the wide panoramas of large windows without the penalty of heat build-up. This means significantly reduced air-conditioning loads and therefore lower running costs. The glass manufacturer is Isoclima, an Italian high-tech company that also supplies glass for luxury automobiles such as Bentley, McLaren, Mercedes and BMW.



KEY FEATURES

G 500



Transatlantic range of 5,000 nm
@ 10 knots



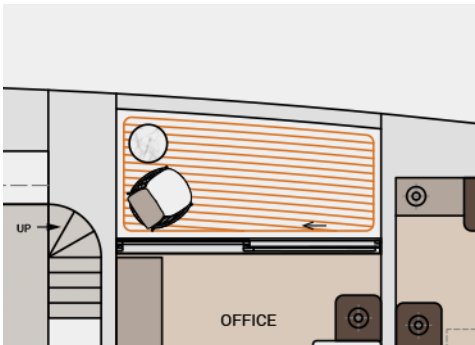
Commercially-certified helipad,
D-value 12.7m



Beach club with sauna



Interior volume of 499 gross tons



Owner's stateroom with two fixed
balconies



High-end audio by
Bowers & Wilkins



Fun Air inflatable pool, 5 x 6 meters
(16' 5" x 19' 8")



Main saloon fireplace



G 500



G 500



MAIN SPEC

G 500

Interior deck heights

2.15 m / 7' 1" Bridge deck

2.2 m / 7' 2" Owner's deck

2.2 m / 7' 2" Main deck

2.1 m / 6' 7" Lower deck



Length overall: 50 m / 165'

Beam max: 11.4 m

Draft: 2.8 m

Material: High tensile steel / Aluminium

Hull type: Round bilge, fast displacement

Tonnage: 550 GT

Max speed: 14 knots

Main engines: 2x MAN D2862 LE469, 974 kW (IMO Tier III)

Range: 5,000 nm @ 10 knots

Propulsion: Shafts + 5 blades propellers

Generators: 2x 115 kW, Kohler

Stabilizers: 4x Stabilizer fins, zero speed

Aft foil: Hull Vane® (option)

Fuel: 60,000 l

Fresh water: 20,000 l

Guests: 12 in 6 cabins

Crew: 9 in 5 cabins

Tenders: 8.6m (Axopar 25), 5.7 Rescue (Castoldi 18 RB)

Helipad: Commercially-certified helipad, D-value 12.7m, maximum take-off weight 3,000 kg (Eurocopter EC-130, EC-135; Bell 407)

Class: BV commercial, REG

Notation: BV Comfort Class, BV Green Star (option)

Naval architecture: Vripack yacht design

Exterior design: Dobroserdov Design

Interior design: Zrobim Architects



G 500

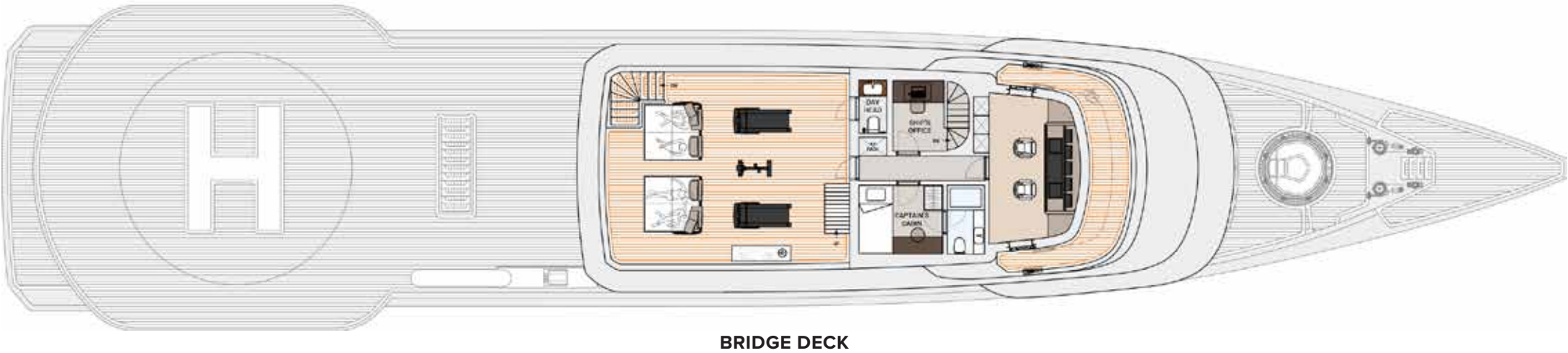
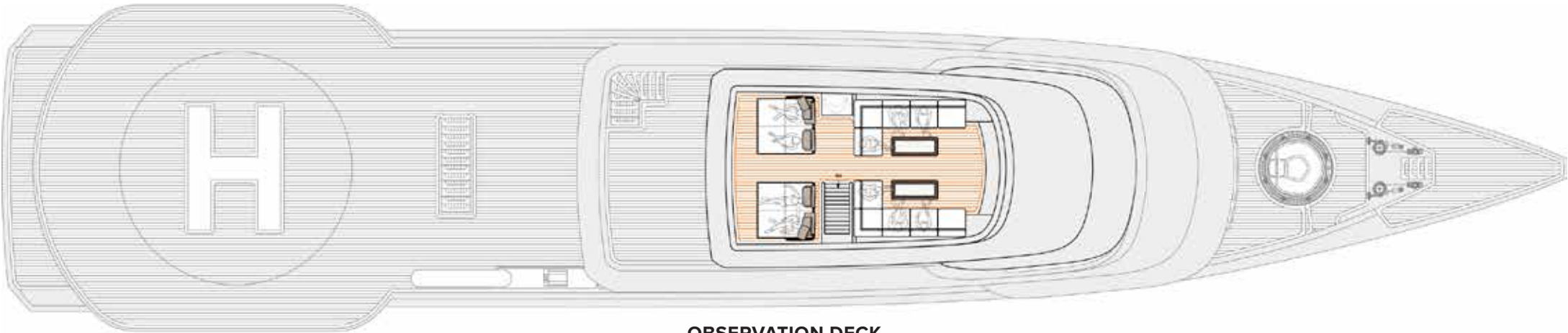


G 500



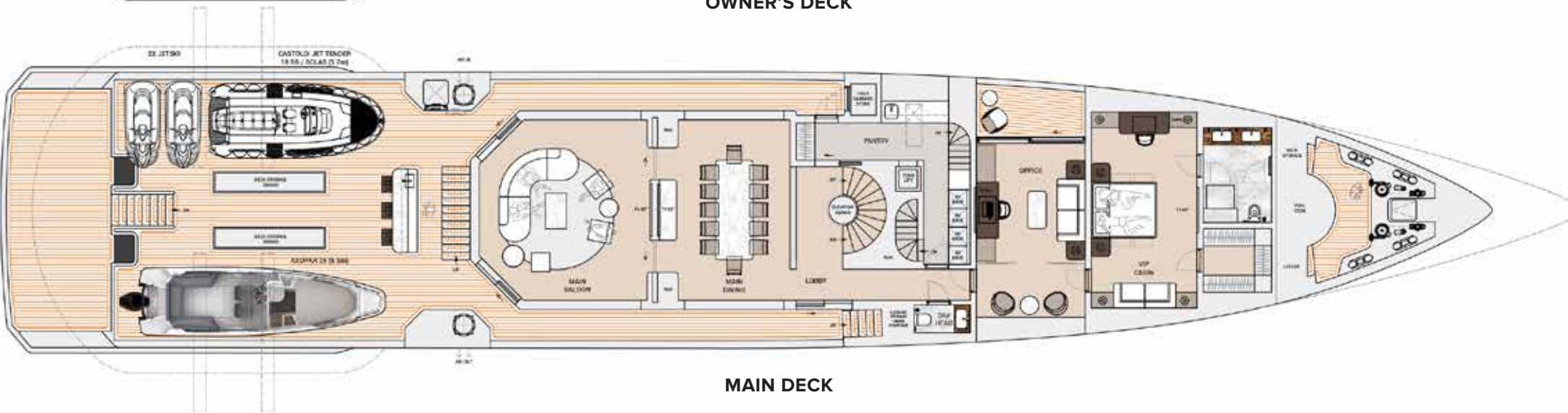
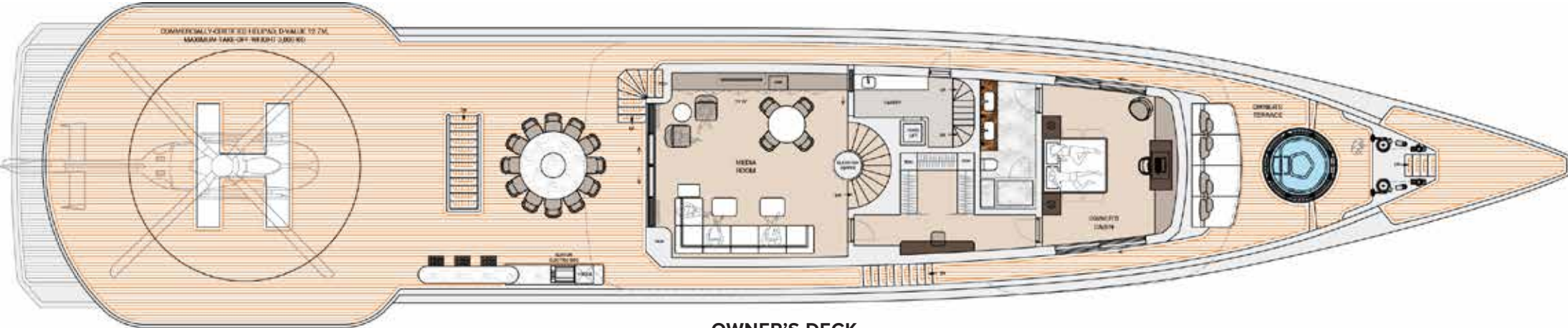
DECK PLANS

G 500



DECK PLANS

G 500

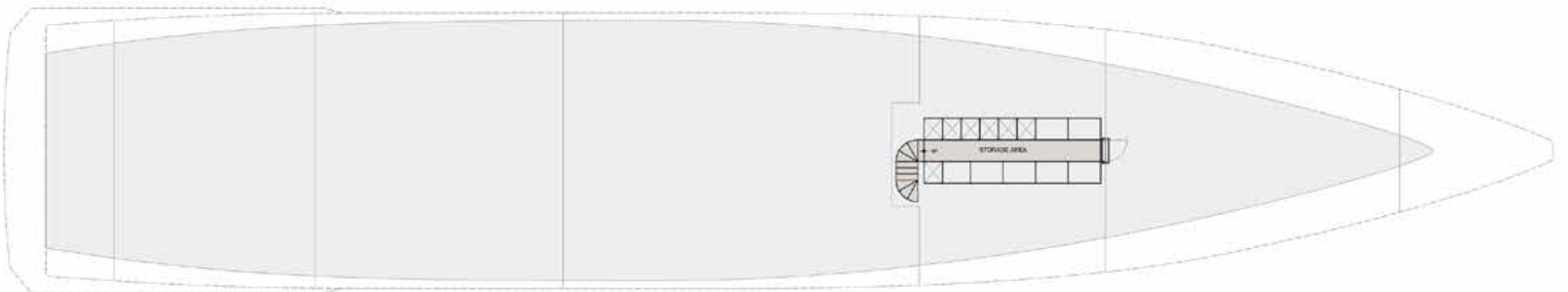


DECK PLANS

G 500



LOWER DECK



TANK DECK



G 500



G 500



G 500



G 500



G 500



G 500



G 500



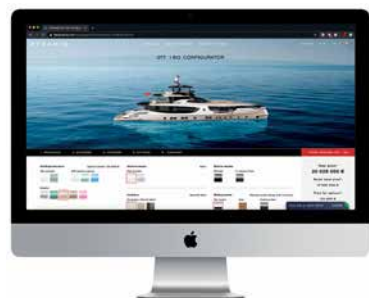
YOUR SPECIAL PLAYGROUND FOR YACHT BUILDS FROM 30 TO 65 METERS

Dynamiq was founded in Monaco in 2014 and is a product of leading European technology and yacht design. This unique international approach has created award-winning, innovative superyachts of the highest quality born from a collaboration of the world's top superyacht design and construction experts.

Dynamiq is the first company in the superyacht industry to introduce an online configurator, allowing the yacht to be easily configured online 24/7 with transparent costs and delivery date.

Come to Dynamiq if you want:

1. An original, custom project;
2. Top-quality full-aluminum or steel-aluminium construction;
3. Dutch engineering and naval architecture with North european makers list;
4. Top-class contractors and leading brand partners from interior design to high-end audio-visual;
5. Competitive prices.



A stylized map of Europe in dark blue. Three red dots are placed on the map: one in the Netherlands, one in Monaco, and one in Turkey. Thin grey lines connect these three dots, forming a triangle. The text 'ENVISIONED IN MONACO. ENGINEERED IN NETHERLANDS. CRAFTED IN TURKEY.' is centered in the middle of the map.

NETHERLANDS

ENVISIONED IN MONACO.
ENGINEERED IN NETHERLANDS.
CRAFTED IN TURKEY.

MONACO

TURKEY

STRINGENT STANDARDS

In order to create the perfect yacht from the outset, Dynamiq complies with the strictest commercial requirements for comfort and safety. Every Dynamiq yacht is built in accordance with the latest Red Ensign Group Code (REG) commercial regulations. This not only makes them ultra-safe, but also means they can be chartered to provide an income for their owners.

Dynamiq and our partners strongly believe that eco-friendly yachts are a requirement for today's owners and their guests. That is why Dynamiq yachts feature fuel-efficient hulls that allow to reduce engine size by 40% and reduced air-conditioning loads thanks to special XIR laminated glass. Dynamiq employs modern technology that provides significant reduction in emissions, which is achieved by the use of a Selective Catalytic Reduction (SCR) system, which reduces NOx up to 85%, while the active regenerated Diesel Particulate Filter (DPF) reduces soot and black carbon emissions by more than 98%. All of these are compliant with IMO tier III standards. Our specially selected sewage treatment plants allow for processing of waste without the use of chemicals for treatment or disinfection, and output potable water. Dynamiq constantly develops its partnerships with modern-minded companies to build on its filtration and energy management systems. All Dynamiq yachts are designed and built to meet the stringent environmental standards of BV Green Passport or RINA's Green Star Plus notations.

Moreover, intensive research into reducing noise and vibration and the use of modern insulation materials create a near silent yacht with exceptional acoustic privacy between cabins. These elevated levels of comfort for passengers and crew have been rewarded with BV Comfort Class and RINA's prestigious Comfort Class notations.

Dynamiq has attained the prestigious ISO 9001 certification by Bureau Veritas for high quality standards and management systems in 2024.



THE SHIPYARD

The construction of Dynamiq yachts is carried out in the Antalya Free Zone, Turkey, which is a government-protected area that benefits from a special tax regime lowering costs and hosts a cluster of high profile shipyards from both Turkey and the Netherlands. Dynamiq occupies the most modern and newest facility in the Free Zone, with 7,000 m² covered space and access to a 2,000 ton syncrolift for safe and easy launching.

The sheds are well fitted out for building the full range of Dynamiq superyachts up to 65 meters in length. Various powertrain options are available including hybrid or diesel-electric technology. The works are organized with international subcontractors from Germany, Austria and Italy, who team up with the best local craftsmen to achieve a level of quality in line with North European standards. Dynamiq has in-house interior, teak and stainless steel production to ensure that the end product finish is absolutely perfect and minimize the risks of delays.

The shipyard working environment is carefully managed and strict quality control standards are maintained by both the Dynamiq team and external surveyors from Europe. Dynamiq organized dedicated modern office spaces to welcome owner's representatives and crew members.





DYNAMIC

- DYNAMIC
- 5
 - 4
 - 3
 - 2
 - 1
 - 0

LO LOUNGE






**LIVE SMART.
BE DYNAMIQ.**





LIVE SMART. BE DYNAMIQ.

www.bedynamiq.com