



D Y N A M I Q

GRAN TURISMO TRANSATLANTIC SERIES

GTT 165

GTT 165

A NEW CLASS OF COOL

This avant-garde 50-metre superyacht features elegant yet sporty exterior styling and packs a punch in terms of performance, aesthetics and onboard features. The combination of aluminium and carbone fiber alloys for the construction ensures a light, robust and easy to maintain vessel. When paired with a Hull Vane for maximum stability and efficiency, she boasts a top speed of 16 or optional 21 knots with almost doubled transatlantic range. Onboard features include six luxurious guest cabins, including vast master stateroom with two fixed balconies, whisper-quiet propulsion, a touch-and-go helipad and a massive aft pool. She is the perfect yacht for cruising the Seven Seas in style.



GTT 165

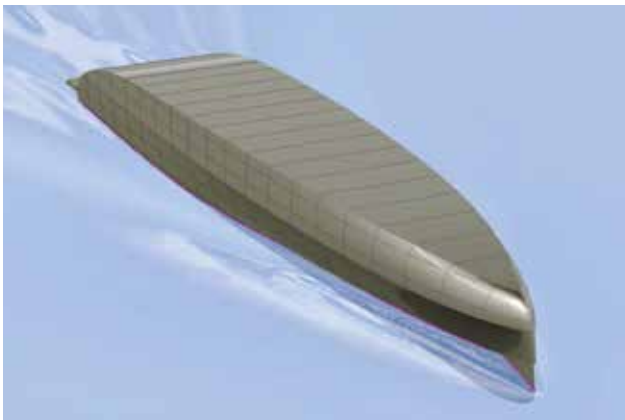


GTT 165



KEY FEATURES

GTT 165



ROUND BILGE FAST DISPLACEMENT HULL

Drawn by the famous Dutch naval architects Vripack, the GTT 165's unique hull features a round-bilge shape for remarkably low resistance and low fuel consumption, while still being capable of high speeds. The design decreases vertical accelerations in the hull, which translates into a far more comfortable motion when sailing. The avant-garde bow shape with a vertical stem maximizes the waterline length, enhancing performance even more. To keep spray levels low, an integrated spray rail deflects water hitting the bow area.



ROBUST FULL ALUMINIUM CONSTRUCTION

Certified marine-grade 5083 aluminium and the stronger 5383 Sealium, a lightweight alloy that weighs three times less than steel, is used for Dynamiq GTT 165 hull and superstructure. A lighter hull provides a better performance, shallower draft and lower fuel consumption. Another benefit is that aluminium guarantees a stiff, robust and vibration-free vessel that is very comfortable and behaves well in a heavy swell or choppy seas. The strength-to-weight ratio of aluminium is equivalent to that of steel and there is much less risk of serious damage in case of a collision than with a fiberglass hull. Unlike composite materials, aluminium is fully recyclable, odorless, does not rust or creak at sea and does not burn in the atmosphere. The GTT 165 hull guarantees unparalleled comfort and safe operation for more than 25 years.



FOUR FIN STABILIZERS BY CMC

CMC fin stabilizers dramatically reduce roll as well as undesired yaw and sway motions caused by active fins. Their vertical concave shape creates a net force direction, both in cruising and at-anchor modes, so the work is more up-down instead of side-to-side. The use of two pairs of stabilisers instead of one pair guarantees more efficient roll reduction but also silent operation as on GTT 165 they are located in the engine room and forward crew area, far from luxury accommodation.



REVERSE BOW

GTT 165

The reverse bow is not just a fad or an attempt to give the exterior a fresh look, it is in fact a highly engineered naval architecture concept. The bow's shape allows for much more efficient and comfortable cruising when compared to traditional bows, as it maximizes the waterline length and can reach higher speeds without the annoying slamming.

This type of bow is used by some of the most advanced and robust vessels in the world, as it is specifically engineered to perform in severe conditions.



USS Zumwalt
Military vessel
(The most expensive ship in the world)



Ulstein X-bow
Offshore supply vessel



F/V Viking Power
Fishing vessel



KEY FEATURES

GTT 165



HULL VANE®

The Hull Vane® is a patented fixed foil located below the stern of a ship. Developed by renowned Dutch naval architects Van Oossanen, it influences the stern wave pattern and creates hydrodynamic lift, which is partially oriented forward. This innovation leads to significant reduction of the hull's resistance, which in turn enables the installation of much smaller engines, fuel savings and longer range. The Hull Vane® also improves stability under way and at anchor, while reducing both pitching and yawing motions.



COMMERCIAL GRADE EQUIPMENT

Only robust commercial grade equipment is used aboard the GTT 165, ensuring that the boat has ultimate functionality and minimizing repairs that are common for consumer grade components. This equipment ranges from heavy duty Volvo Penta D16 engines with SCR filters, allowing the boat to sail continuously and avail of its full range, to Electrolux commercial freezers, maximizing the utility and efficiency of the galley.



OCEAN-GOING RANGE

The GTT 165 boasts a transatlantic range of 5,000 nautical miles at 10 knots. This is enough to brave the Atlantic crossing, which is about 2,700 nautical miles, and avail of seasons both in the Bahamas and the Med. The GTT 165's huge range also means that there is no need for bunkering if you choose to sail in just a few locations, allowing you to fully take advantage of your time aboard and create those special memories.



GTT 165



GTT 165



GTT 165



MAIN SPEC

GTT 165

2.1 m / 6' 11"	Sun deck
2.15 m / 7' 1"	Upper deck
2.2 m / 7' 2"	Main deck
2.1 m / 6' 11"	Lower deck



Length overall:	49.9 m / 165'
Beam:	9 m / 29'6"
Draft:	2 m / 6'6"
Material:	Full aluminium, 5083
Hull type:	Round-bilge, fast displacement
Tonnage:	< 500 GT

Max speed:	16 knots
Main engines:	2x Volvo Penta D16-850, 625 kW (IMO Tier III)

Max speed (option):	21 knots
Main engines (option):	2x MTU 16V2000 M97L, 1,939 kW (IMO Tier III)

Range:	5,000 nm @ 10 kn
--------	------------------

Fuel:	52,280 l / 11,500 US gallons
Fresh water:	21,370 l / 4,700 US gallons
Grey & Black water:	17,820 l / 3,919 US gallons

Generators:	2x 99 kW, Kohler
Stabilisers:	4x Stabilizer CMC Marine
Aft foil:	Hull Vane®

Guests:	12 in 6 cabins
Crew	9 in 5 cabins

Helipad (option):	Touch & Go, maximum take-off weight 3,000 kg (Eurocopter EC130 T2, AW 119, Bell 407 GXP)
-------------------	--

Tenders:	BWilliams 625 (6.32 m / 21'), Zodiac 380 MOB
----------	--

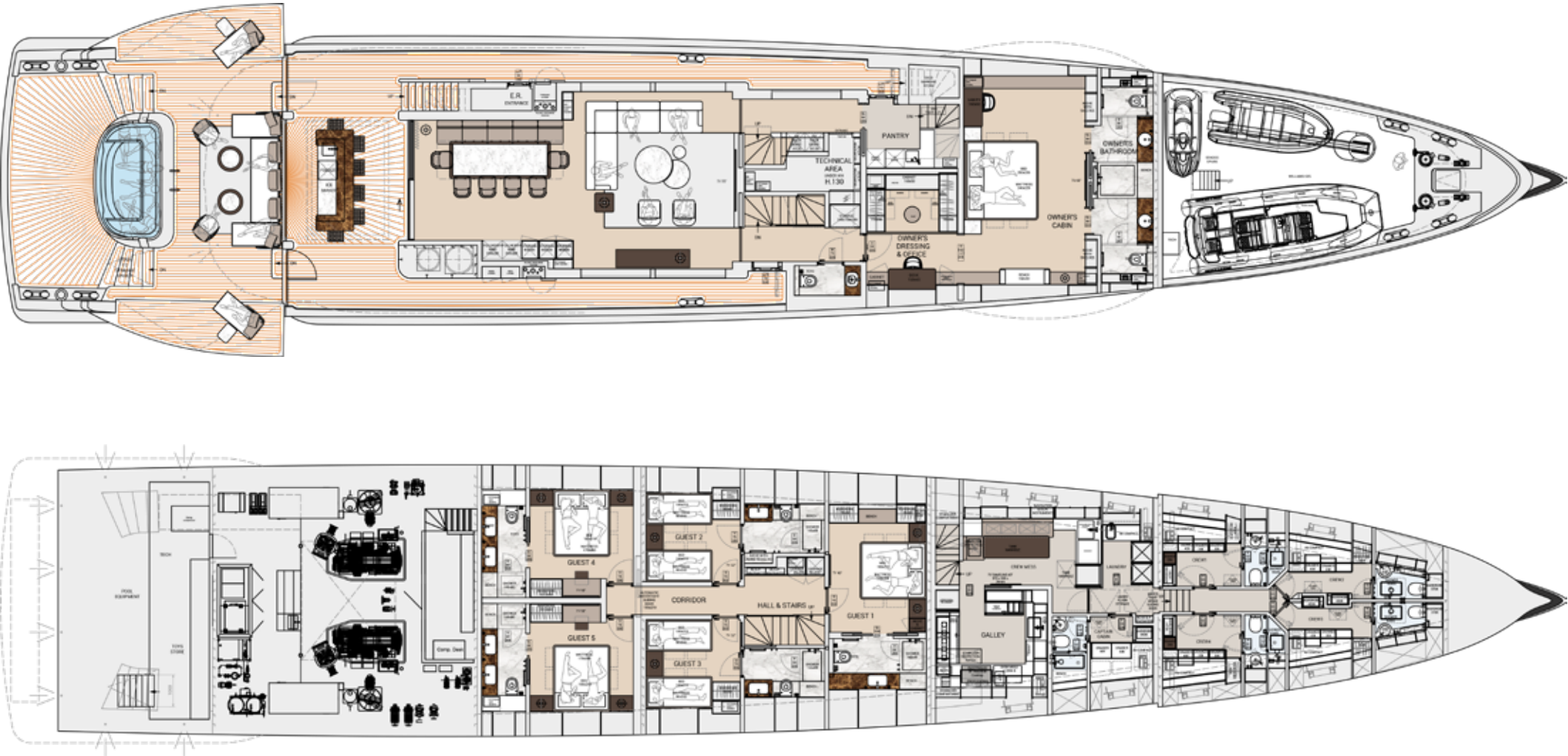
Class:	BV commercial, unrestricted range, REG compliant
Notations:	BV Comfort Class, Green Passport (option)

Naval Architecture:	Vripack Yacht Design
Exterior Design:	Dobroserdov Design
Interior Design:	Dobroserdov Design



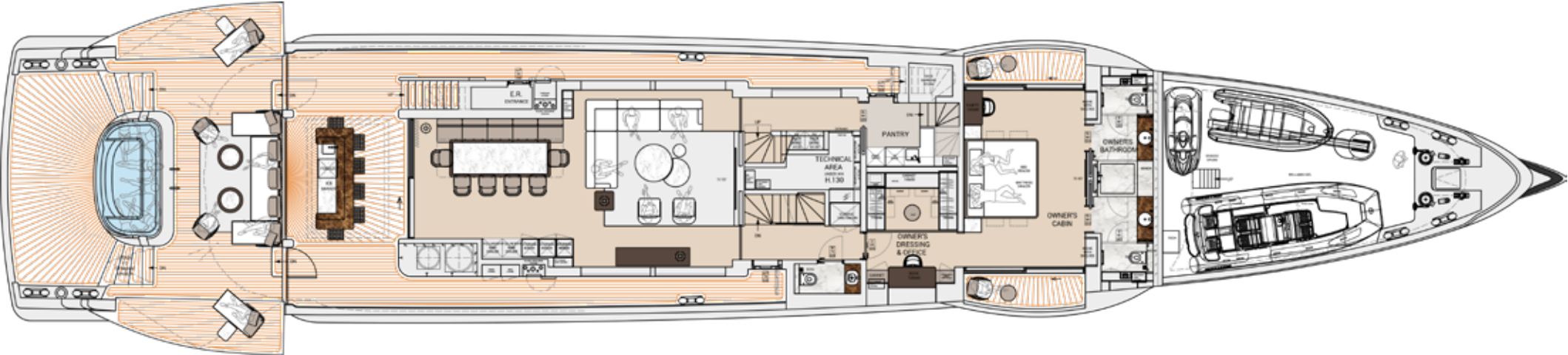
DECK PLANS

GTT 165



DECK PLANS

GTT 165

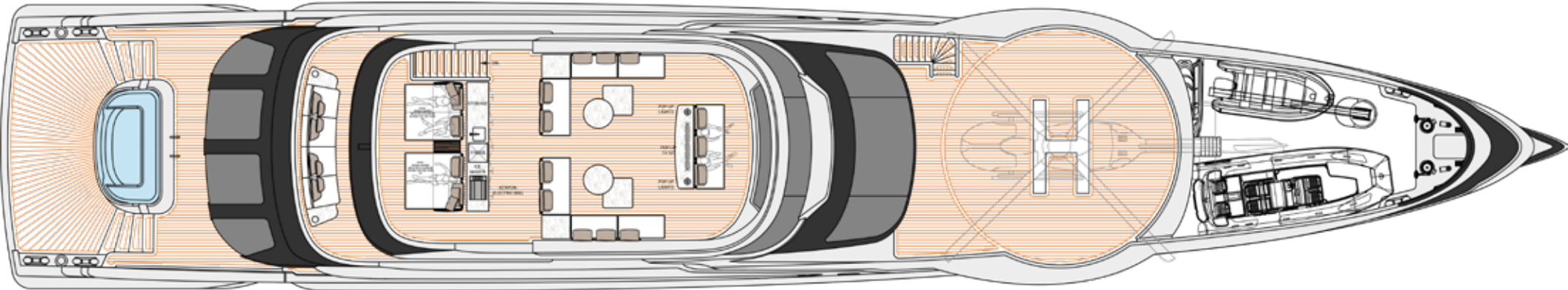


OWNER'S SUITE WITH STRUCTURAL BALCONIES (OPTION)

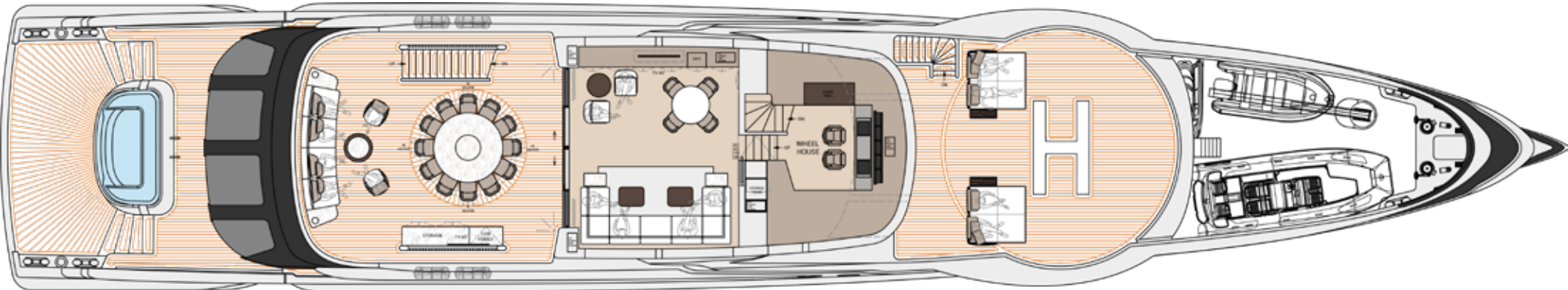


DECK PLANS

GTT 165



**OPTIONAL TOUCH & GO HELIPAD, MAXIMUM TAKE-OFF WEIGHT 3,000 KG
(EUROCOPTER EC130 T2, AW 119, BELL 407 GXP)**



GTT 165



GTT 165





GTT 165



GTT 165



GTT 165



GTT 165



GTT 165



GTT 165



GTT 165



GTT 165



GTT 165



GTT 165



GTT 165



GTT 165



GTT 165





GTT 165



GTT 165





GTT 165



GTT 165



GTT 165



GTT 165



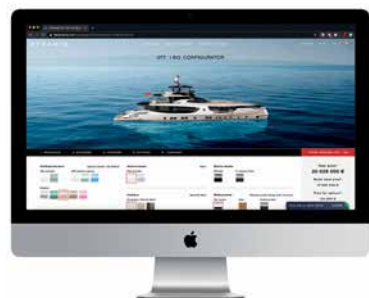
YOUR SPECIAL PLAYGROUND FOR YACHT BUILDS FROM 30 TO 65 METERS

Dynamiq was founded in Monaco in 2014 and is a product of leading European technology and yacht design. This unique international approach has created award-winning, innovative superyachts of the highest quality born from a collaboration of the world's top superyacht design and construction experts.

Dynamiq is the first company in the superyacht industry to introduce an online configurator, allowing the yacht to be easily configured online 24/7 with transparent costs and delivery date.

Come to Dynamiq if you want:

1. An original, custom project;
2. Top-quality full-aluminum or steel-aluminium construction;
3. Dutch engineering and naval architecture with North european makers list;
4. Top-class contractors and leading brand partners from interior design to high-end audio-visual;
5. Competitive prices.



A stylized map of Europe with a dark blue background. Three red dots are placed on the map: one in the Netherlands, one in Monaco, and one in Turkey. Thin white lines connect these three dots, forming a triangle. The text 'ENVISIONED IN MONACO. ENGINEERED IN NETHERLANDS. CRAFTED IN TURKEY.' is centered in the middle of the map.

NETHERLANDS

ENVISIONED IN MONACO.
ENGINEERED IN NETHERLANDS.
CRAFTED IN TURKEY.

MONACO

TURKEY

STRINGENT STANDARDS

In order to create the perfect yacht from the outset, Dynamiq complies with the strictest commercial requirements for comfort and safety. Every Dynamiq yacht is built in accordance with the latest Red Ensign Group Code (REG) commercial regulations. This not only makes them ultra-safe, but also means they can be chartered to provide an income for their owners.

Dynamiq and our partners strongly believe that eco-friendly yachts are a requirement for today's owners and their guests. That is why Dynamiq yachts feature fuel-efficient hulls that allow to reduce engine size by 40% and reduced air-conditioning loads thanks to special XIR laminated glass. Dynamiq employs modern technology that provides significant reduction in emissions, which is achieved by the use of a Selective Catalytic Reduction (SCR) system, which reduces NOx up to 85%, while the active regenerated Diesel Particulate Filter (DPF) reduces soot and black carbon emissions by more than 98%. All of these are compliant with IMO tier III standards. Our specially selected sewage treatment plants allow for processing of waste without the use of chemicals for treatment or disinfection, and output potable water. Dynamiq constantly develops its partnerships with modern-minded companies to build on its filtration and energy management systems. All Dynamiq yachts are designed and built to meet the stringent environmental standards of BV Green Passport or RINA's Green Star Plus notations.

Moreover, intensive research into reducing noise and vibration and the use of modern insulation materials create a near silent yacht with exceptional acoustic privacy between cabins. These elevated levels of comfort for passengers and crew have been rewarded with BV Comfort Class and RINA's prestigious Comfort Class notations.

Dynamiq has attained the prestigious ISO 9001 certification by Bureau Veritas for high quality standards and management systems in 2024.



THE SHIPYARD

The construction of Dynamiq yachts is carried out in the Antalya Free Zone, Turkey, which is a government-protected area that benefits from a special tax regime lowering costs and hosts a cluster of high profile shipyards from both Turkey and the Netherlands. Dynamiq occupies the most modern and newest facility in the Free Zone, with 7,000 m² covered space and access to a 2,000 ton syncrolift for safe and easy launching.

The sheds are well fitted out for building the full range of Dynamiq superyachts up to 65 meters in length. Various powertrain options are available including hybrid or diesel-electric technology. The works are organized with international subcontractors from Germany, Austria and Italy, who team up with the best local craftsmen to achieve a level of quality in line with North European standards. Dynamiq has in-house interior, teak and stainless steel production to ensure that the end product finish is absolutely perfect and minimize the risks of delays.

The shipyard working environment is carefully managed and strict quality control standards are maintained by both the Dynamiq team and external surveyors from Europe. Dynamiq organized dedicated modern office spaces to welcome owner's representatives and crew members.





DYNAMIC

LO LOUNGE

- DYNAMIC
- 5
 - 4
 - 3
 - 2
 - 1
 - 0






**LIVE SMART.
BE DYNAMIQ.**





LIVE SMART. BE DYNAMIQ.

www.bedynamiq.com