



D Y N A M I Q

GLOBAL SERIES

G 500

HYBRID

G 500
HYBRID

ECO-CRUIISING IN SILENCE

The Global 500 Hybrid is a last-generation explorer that steps boldly into the domain of hybrid propulsion. The fast displacement hull combined with MAN diesels and twin Siemens EcoProp electric motors mean the lightweight, all-aluminium G 500 is not only eco-friendly and highly efficient with a cruising range of 4,500 nm, but also extremely quiet. The loft-style layout features a master stateroom on main deck with two fixed balconies, five deluxe guest cabins on the lower deck, a spa with sauna and toys garage in the transom, a huge sundeck with hot tub and space for gym equipment, and a touch-and-go helipad on the main deck aft rated at 3,000kg. What is more the yacht comes with stylish interior design by Bentley Home as standard and incredible ceiling heights of 2.2 metres throughout.



G 500
HYBRID



G 500
HYBRID



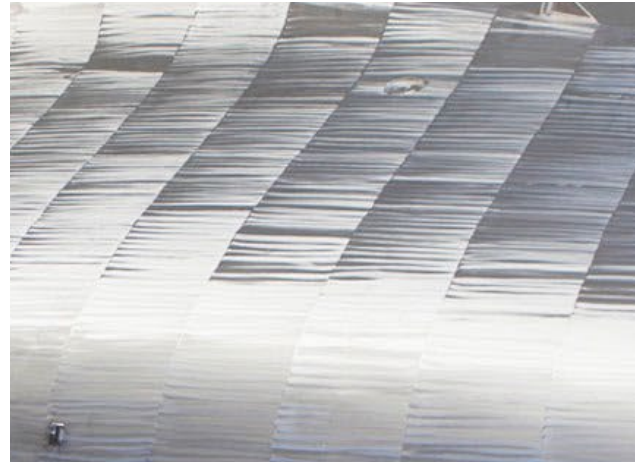
KEY FEATURES

G 500
HYBRID



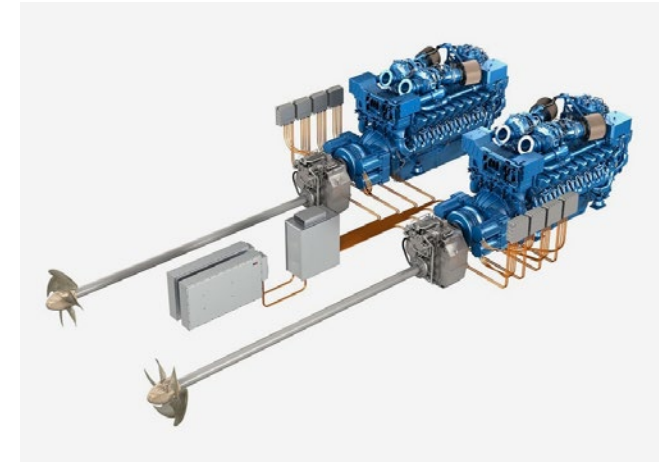
Round bilge fast displacement hull

Drawn by the famous Dutch naval architects Van Oossanen, the G 500 unique hull features a round-bilge shape for remarkably low resistance and low fuel consumption, while still being capable of high speeds. The design decreases vertical accelerations in the hull, which translates into a far more comfortable motion when sailing. The avant-garde bow shape with a vertical stem maximises the waterline length, enhancing performance even more. To keep spray levels low, an integrated spray rail deflects water hitting the bow area. Built entirely from marine grade aluminium, the G 500 hull guarantees unparalleled comfort and safe operation for more than 25 years.



Robust full aluminium construction

Certified marine-grade 5083 aluminium and stronger 5383 Sealium, a lightweight alloy that weighs three times less than steel, is used for Dynamiq G 500 hull and superstructure. A lighter hull provides a better performance, shallower draft, lower fuel consumption. Another benefit is that aluminium guarantees a stiff, robust and vibration-free vessel that is very comfortable and behaves well in a heavy swell or choppy seas. The strength-to-weight ratio of aluminium is equivalent to that of steel and there is much less risk of serious damage in case of a collision than with a fibreglass hull. Unlike composite materials, aluminium is fully recyclable, odourless, does not rust or creak at sea and does not burn in the atmosphere.



Hybrid power plant

With the main engines switched off, the generators power two 100 kW electric motors allowing the yacht to reach 8 knots in complete silence for an unlimited period of time



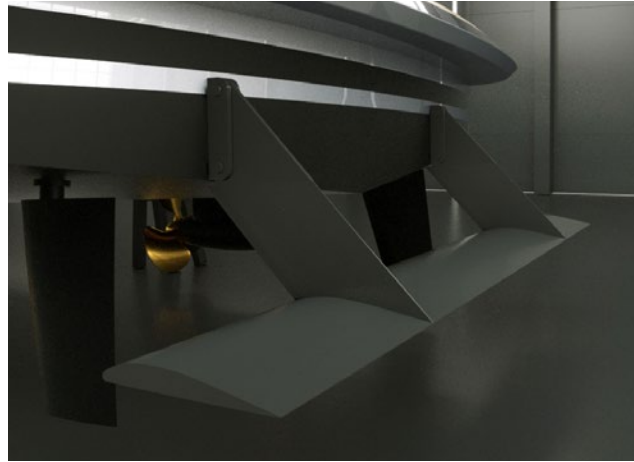
KEY FEATURES

G 500
HYBRID



Curved fin stabilizers by Side Power

Vector Fins stabilisers dramatically reduce roll as well as undesired yaw and sway motions caused by active fins. Their vertical concave shape creates a net force direction, both in cruising and at-anchor modes, so the work is more up-down instead of side-to-side. By changing the net force angle, this also increases the leverage arm around the boat's rolling point, further increasing the physical forces that work on the boat to reduce roll. This provides more efficient stabilisation per fin size, which means that drag and power consumption are a lot less than with other fins offering comparable roll reduction.



Hull Vane®

The Hull Vane® is a patented fixed foil located below the stern of a ship. Developed by renowned Dutch naval architects Van Oossanen it influences the stern wave pattern and creates hydrodynamic lift, which is partially oriented forward. This innovation leads to significant reduction of the hull's resistance, which in turn enables the installation of much smaller engines, fuel savings and longer range. The Hull Vane® also improves stability under way and at anchor, while reducing both pitching and yawing motions.



XIR glass

The G 500 features next-generation laminated XIR glass that allows maximum light transmission, while keeping solar heat gain at bay. Harmful UV rays are almost completely blocked, and heat transmission reduced by 60%. The result is an interior that offers the wide panoramas of large windows without the penalty of heat build-up. This means significantly reduced air-conditioning loads and therefore lower running costs. The glass manufacturer is Isoclima, an Italian high-tech company that also supplies glass for luxury automobiles such as Bentley, McLaren, Mercedes and BMW.



KEY FEATURES

G 500
HYBRID



Transatlantic range of 4,500 nm
@ 10 knots



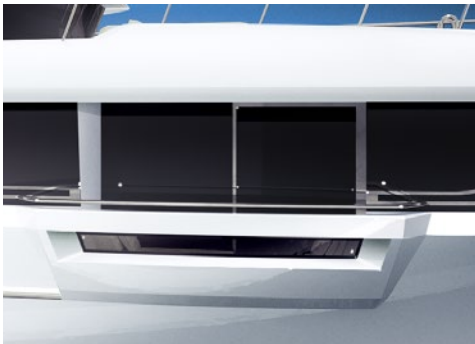
Fun Air inflatable pool, 5 x 6 meters
(16' 5" x 19' 8")



Beach club with sauna



Interior volume of 499 gross tons



Owner's stateroom with two fixed
balconies



High-end audio by
Bowers & Wilkins



Japanese Teppanyaki on sundeck



Main saloon fireplace



G 500
HYBRID



CARRARA WHITE / WHISPER GREEN METALLIC



MAIN SPEC

G 500
HYBRID

Interior deck heights

2.25 m Sun deck
2.15 m Upper deck
2.20 m Main deck
2.10 m Lower deck



Length overall: 50 m / 164'
Beam max: 9.3 m / 30' 6"
Draft: 2.2 m / 7' 3"
Material: Full aluminium / Sealium
Hull type: Round bilge, fast displacement
Tonnage: 499 GT

Max speed: 16 knots
8 knots (electric mode)
Main engines: 2x MAN V8 1200, 882 kW
2x e-motors Siemens EcoProp, 100 kW

Propulsion: Shafts + propellers

Fuel: 45,000 l / 11,887 US gallons
Fresh Water: 16,000 l / 4,226 US gallons
Grey and Black: 7,000 l / 1,850 US gallons

Range: 4,500 nm @ 10 knots

Generators: 2x 175 kW, variable speed
Stabilizers: 2x stabilizers Side Power, zero speed
Hull Vane®

Guests: 12 in 6 cabins
Crew: 9 in 5 cabins

Tenders: 1x Williams 625 (6,3 m), 1x Zodiac 340 MOB

Helipad: Touch & Go, maximum take-off weight 3,000 kg

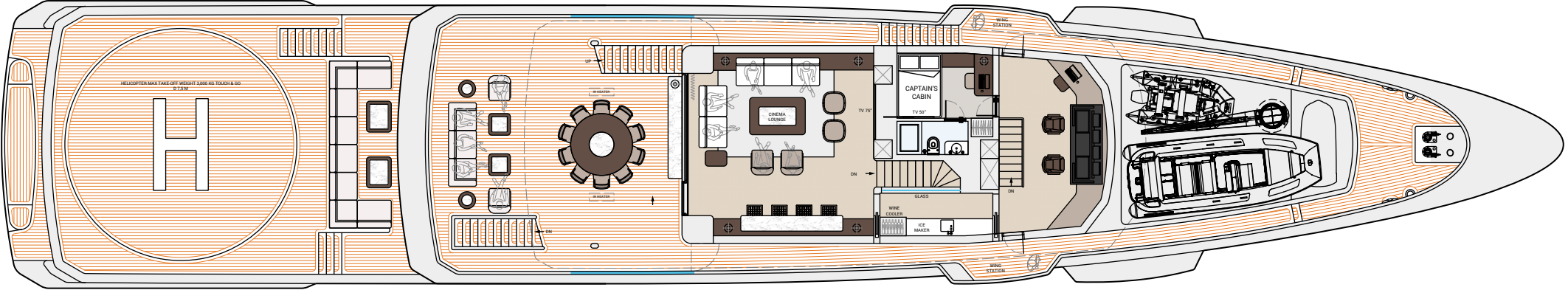
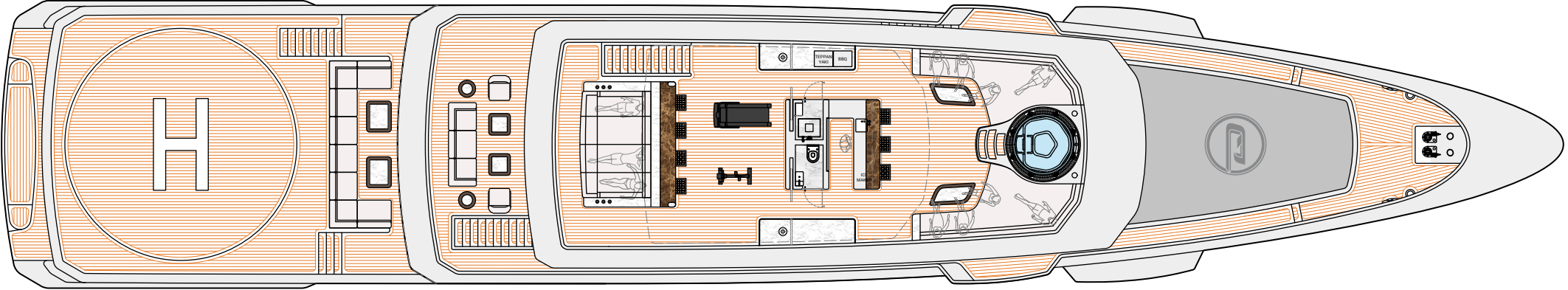
Class: RINA commercial, REG
Notation: RINA Comfort Class, RINA Green Star (option)

Naval architecture: Van Oossanen NA
Exterior design: Dobroserdov Design



DECK PLANS

G 500
HYBRID

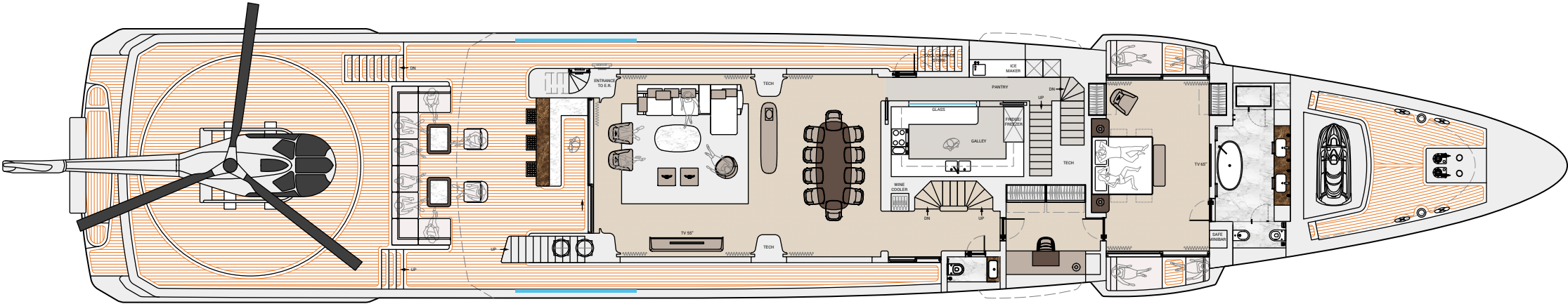


This drawing is the property of Dynamiq Yachts SARL and is not to be modified, used or reproduced in whole or part without written permission.



DECK PLANS

G 500
HYBRID



This drawing is the property of Dynamiq Yachts SARL and is not to be modified, used or reproduced in whole or part without written permission.





BENTLEY

HOME

G 500
HYBRID





BENTLEY

HOME

*G 500
HYBRID*





BENTLEY

HOME

G 500
HYBRID





BENTLEY

HOME

G 500
HYBRID





BENTLEY

HOME

G 500
HYBRID



PRICE, OPTIONS & PAYMENT TERMS

G 500
HYBRID

BASE PRICE*:

€ 27,500,000

OPTIONS:

<input type="checkbox"/> Silent package (extra insulation, double glass portholes)	€ 125,000
<input type="checkbox"/> Hull Vane	€ 117,000
<input type="checkbox"/> Bentley package (metallic paint, furniture, lights and carpets set)	€ 435,000
<input type="checkbox"/> Bowers & Wilkins high-end package	€ 39,000
<input type="checkbox"/> Heated bathroom floors	€ 17,500
<input type="checkbox"/> Fine marbles in luxury areas	€ 49,000
<input type="checkbox"/> Bed linen, bath and deck towels by Frette	€ 45,000
<input type="checkbox"/> Interior scent diffusion	€ 4,500
<input type="checkbox"/> Sundeck cinema	€ 19,000
<input type="checkbox"/> Crew call buttons	€ 8,000
<input type="checkbox"/> Miele electric BBQ on sundeck	€ 3,500
<input type="checkbox"/> Ice dispenser and fridge on sun deck bar	€ 8,000
<input type="checkbox"/> 2 x Miele wine coolers on sundeck	€ 9,000
<input type="checkbox"/> Forward sofa on main deck	€ 9,100
<input type="checkbox"/> Panasonic bow camera	€ 4,500
<input type="checkbox"/> 7 Underwater lights	€ 17,500
<input type="checkbox"/> VSAT Intellian V60	€ 35,000
<input type="checkbox"/> "All weather" package for main and sun deck (IR heating)	€ 14,500

PAYMENT TERMS:

1st year

Contract signature	20%
Keel laying	20%

2nd year

Main engines at the yard	25%
Interior installation start	20%

3rd year

Launch	10%
Delivery	5%

BUILD TIME:

30 months

* More options are available at bedynamiq.com



G 500
HYBRID



THE SHIPYARD

Dynamiq is a private shipyard founded in 2014 and owned by yacht broker and designer Sergei Dobroserdov. His main strategy with Dynamiq was to create a well-organised and owner/broker-friendly facility where clients and their reps can enjoy a creative and transparent construction process.

Dynamiq is the only shipyard in Italy building yachts to North European standards that are 100% created by leading naval architects and structural or mechanical engineering companies in the Netherlands. Dynamiq production is located in the picturesque area of Massa on Italy's Tuscan coast. This modern and high-tech facility is fitted out for building the full range of Dynamiq superyachts up to 50 metres in length with various powertrain options, including hybrid technology. The Dynamiq Yachts production facility offers the highest standards of working environment and quality control.

Come to Dynamiq if you want:

1. Original contemporary design;
2. Top-quality full-aluminum construction;
3. Complete Dutch engineering with naval architecture by Van Oossanen;
4. Top-class contractors and leading brand partners from interior design to high-end audio-visual;
5. Competitive Italian prices.






LIVE SMART. BE DYNAMIQ.



Via Massa Avenza 85, 54100 Massa, Italy

www.bedynamiq.com

 @bedynamiq